

# Sophos Wireless

## The smarter way to simple, secure Wi-Fi

Sophos Wireless provides an easy, effective way to manage and secure your wireless networks. You can use it on its own or as part of your Sophos Central portfolio of cloud-managed security solutions.



### Highlights

- ▶ Managed from Sophos Central
- ▶ Superior visibility into wireless health
- ▶ Simple deployment and administration
- ▶ Synchronized Security-ready
- ▶ Enhanced security with rogue AP detection
- ▶ Multi-site management and cloud scalability

### Manage all your security on a single platform

Sophos Central is a scalable management platform which gives you a single pane of glass for all of your cloud-managed security solutions. Using Sophos Central, you can manage Sophos Wireless on its own, or alongside your Endpoint, Mobile, Email, Encryption and Server Protection.

### Superior visibility into wireless health

All the key information about the health of your wireless networks and connecting clients is directly at your fingertips. With visibility into potential threats, such as rogue APs, insight into clients with compliance or connectivity issues and advanced diagnostics, identifying and troubleshooting issues is quick and easy.

### Simple deployment and administration

Using the step-by-step guidance in our on-boarding wizard, creating networks, registering one or more access points, and adding sites is child's play. Our solution is built to be simple to use, even for non-wireless experts, but that doesn't mean you forfeit functionality. Schedule firmware upgrades to keep your network up to date and benefit from new features and enhancements in every release.

### Intelligence connected with Security Heartbeat™

When using our Security Heartbeat™ enabled APX Series access points, you can monitor the health status of any Sophos Central-managed endpoint or mobile device and so automatically restrict web access on trusted Wi-Fi networks. Users with serious compliance issues see a splash screen to alert them to their walled garden status but receive full connectivity again, once health is restored.

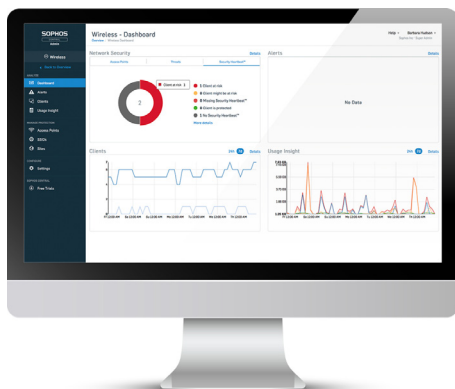
### Security enhanced for your trusted Wi-Fi networks

Our Enhanced Rogue AP Detection classifies neighboring Wi-Fi networks to identify threats and prevent attempts to infiltrate an organization via Wi-Fi.

Additionally, you can keep your networks secure by providing controlled internet access and hotspots for visitors, contractors, and other guests on your network. Use enterprise-grade backend authentication for a seamless user experience.




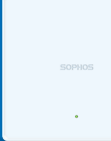

### Multi-site management and cloud scalability

Whether you have just one growing network, or multiple sites, extending your Wi-Fi is as simple as adding an additional access point.



## Sophos APX Series Access Points – at a glance

The Sophos APX Series offers a range of 802.11ac Wave 2 access points for indoor and outdoor use.

|  |                          |   |    |   |   |
|--|---|--|--|--|--|
| <b>MODEL</b>                           | APX 120   | APX 320  | APX 530  | APX 740  | APX 320X   |
| <b>MANAGEMENT</b>                      | <b>Cloud:</b> Sophos Central<br><b>On-premises:</b> Sophos XG Firewall (v17.5.3/v17.5.5) or SG UTM (v9.7) |  |  |  | <b>Cloud:</b> Sophos Central   |
| <b>DEPLOYMENT</b>                      | Indoor; desktop, wall, or ceiling mount.  |  |  |  | Outdoor; pole/wall mount   |
| <b>WLAN STANDARDS</b>                  | 802.11 a/b/g/n/ac Wave 2  |  |  |  |  |
| <b>RADIOS</b>                          | 1x 2.4 GHz single-band<br>1x 5 GHz single-band  | 1x 2.4 GHz/5 GHz dual-band<br>1x 5 GHz single-band<br>1x Bluetooth low-energy (BLE)  | 1x 2.4 GHz single band<br>1x 5 GHz single band<br>1x Bluetooth low energy (BLE)  |  | *Regional restrictions apply<br>Radio-1 not available<br>in all regions<br><br>1x 2.4 GHz/5 GHz dual band<br>1x 5 GHz single band<br>1x Bluetooth low-energy (BLE) |
| <b>ANTENNAS</b>                        | 2x internal dual-band antenna for Radio-0 and 1   | 2x internal dual-band antenna for Radio-0<br>2x internal 5 GHz antenna for Radio-1<br>1x internal 2.4 GHz antenna for BLE (for future use) | 3x internal 2.4 GHz antenna for Radio-0<br>3x internal 5 GHz antenna for Radio-1<br>1x internal 2.4 GHz antenna for BLE (for future use) | 4x internal 2.4 GHz antenna for Radio-0<br>4x internal 5 GHz antenna for Radio-1<br>1x internal 2.4 GHz antenna for BLE (for future use) | 4x external dual band antenna for Radio-0 and Radio-1 (omni-directional)<br>1x internal 2.4 GHz antenna for BLE (for future use)                                   |
| <b>ANTENNA OPTIONS</b>                 | ✗   | ✗  | ✗  | ✗  | 120° Sector, 30° Directional   |
| <b>DFS</b>                             | ✓   | ✓  | ✓  | ✓  | ✓  |
| <b>PERFORMANCE</b>                     | 2x2:2 MU-MIMO   | 2x2:2 MU-MIMO  | 3x3:3 MU-MIMO  | 4x4:4 MU-MIMO  | 2x2:2 MU-MIMO  |
| <b>INTERFACES</b>                      | 1x 12V DC-in (power supply not included)<br>1x RJ45 10/100/1000 Ethernet w/PoE                            | 1x RJ45 connector console serial port<br>1x RJ45 10/100/1000 Ethernet w/PoE  | 1x RJ45 connector console serial port<br>1x RJ45 10/100/1000 Ethernet port<br>1x RJ45 10/100/1000 Ethernet w/PoE                         |  | 1x RJ45 10/100/1000 Ethernet w/PoE   |
| <b>POWER (MAX.)</b>                    | 11.8 W  | 11.5 W   | 16.7 W   | 22.4 W   | 18.9 W   |
| <b>POWER-OVER-ETHERNET (MIN.)</b>      | PoE 802.3af   |  | PoE+ 802.3at   |  |  |
| <b>DIMENSIONS</b>                      | 144x144x33.5 mm   | 155x155x38 mm  | 183x183x39 mm  | 195x195x43 mm  | 180 x260.5x87 mm   |
| <b>WEIGHT</b>                          | 0.256 kg  | 0.474 kg   | 0.922 kg   | 1.012 kg   | 1.42 kg  |
| <b>CERTIFICATIONS &amp; COMPLIANCE</b> | CB, UL, CE, FCC, ISED (IC), RCM, MIC, Anatel, EN 60601-1-2 (Medical Equipment Directive)                  | CB, UL, CE, FCC, ISED (IC), RCM, MIC, NCC, Anatel, EN 60601-1-2 (Medical Equipment Directive)<br>Plenum-rated (UL2043)                     | CB, UL, CE, FCC, ISED (IC), RCM, Anatel, EN 60601-1-2 (Medical Equipment Directive)<br>Plenum-rated (UL2043)                             | CB, UL, CE, FCC, ISED (IC), RCM, Anatel, EN 60601-1-2 (Medical Equipment Directive)<br>Plenum-rated (UL2043)                             | CE, FCC, IC (ISED), RCM, CB, UL, Anatel, NOM (planned)   |

\*Regulatory restrictions in some regions prevent the use of some 5 GHz channels in outdoor environments, therefore Radio-1 cannot be used in the [countries listed here](#)

## Interested in a free trial?\*

Contact us to ask about a 30-day evaluation