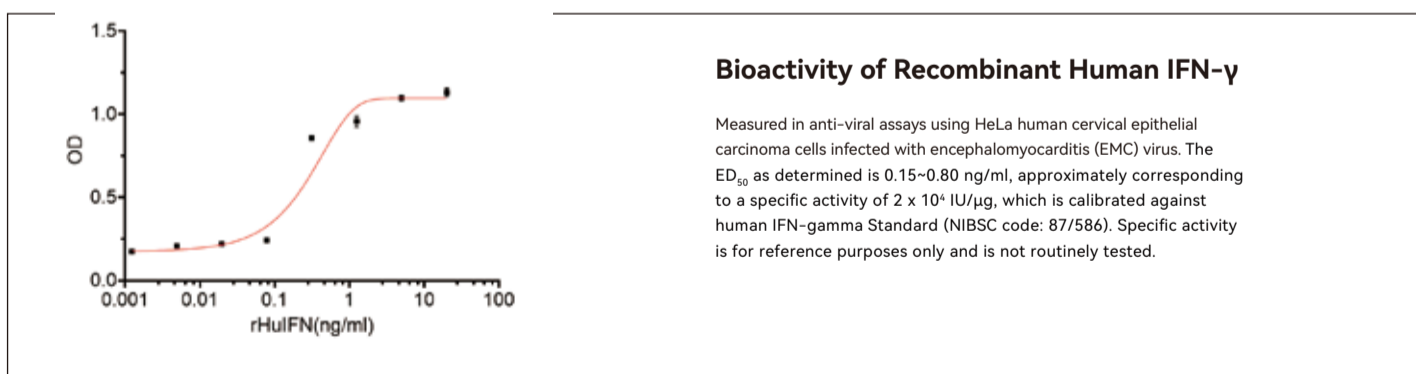
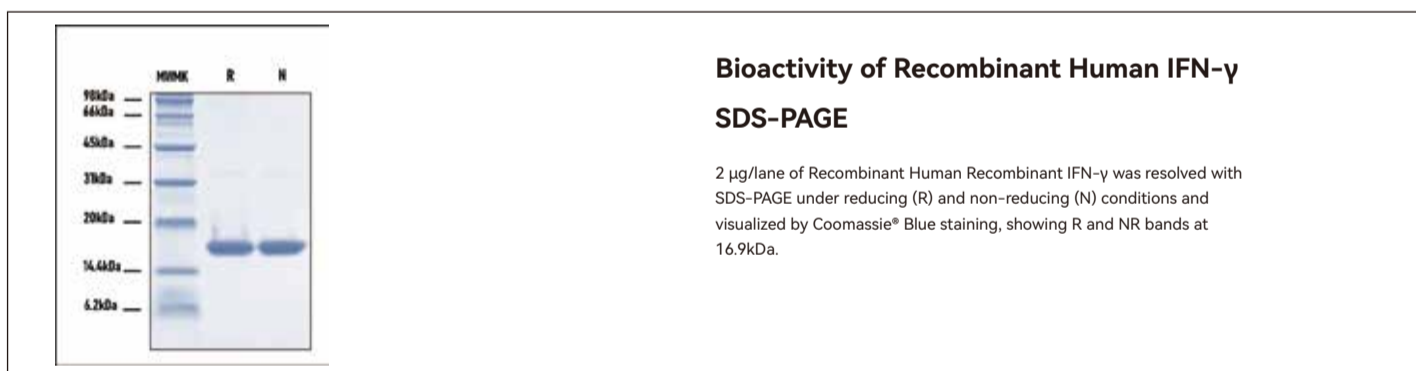
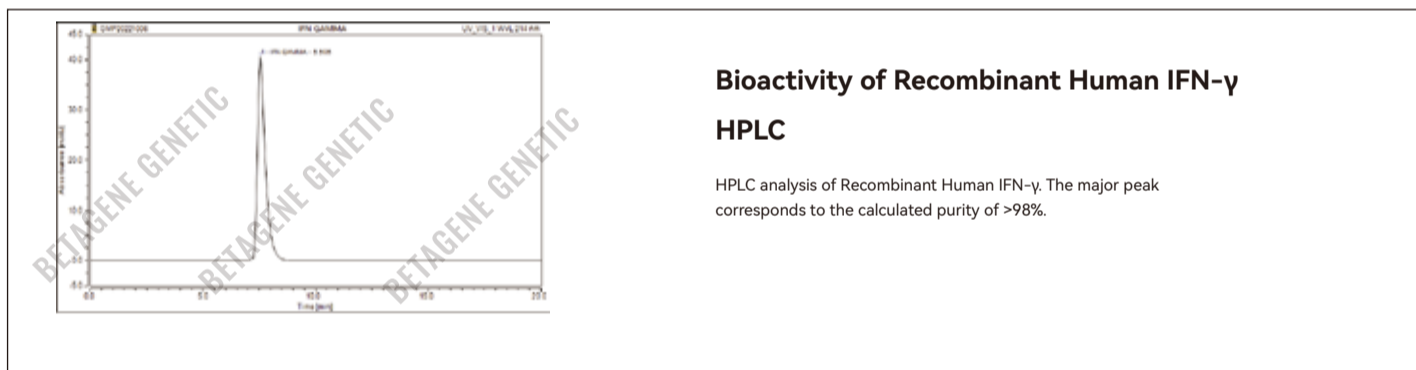




# Recombinant Human IFN- $\gamma$ Tag-Free GMP

<b>Physical Appearance</b>	Sterile Filtered White lyophilized (freeze-dried) powder.
<b>Gene ID</b>	15978
<b>Description</b>	Interferon-gamma (IFN- $\gamma$ ), also known as Type II interferon or immune interferon, is a dimerized soluble cytokine that is critical for innate and adaptive immunity against viral, some bacterial and protozoal infections. It is produced primarily by CD4 and CD8 T lymphocytes as well as natural killer (NK) and natural killer T(NKT) cells. The primary role for IFN- $\gamma$ is the activation of macrophages to increase phagocytosis, tumoricidal properties, and intracellular killing of pathogens. IFN- $\gamma$ also increases expression of MHC antigens by macrophages and this facilitates antigen presentation to T cells. The recombinant Interferon-gamma is a 16.9 kDa protein consisting of 144 amino acid residues.
<b>Catalog Number</b>	GE04.1/GE04.2
<b>Volume</b>	100 $\mu$ g/200 $\mu$ g
<b>Source</b>	E. coli
<b>Molecular Weight</b>	Approximately 16.9 kDa, 144 amino acids
<b>AA Sequence</b>	HGTVIESLESLNYYFNSSGIDVEEKSLFLDIWRNWQKDGDMKILQSQISFYLRLEVLKDNQAISNNISVIESHLITFFSNSKAKKDAFMSIAKFEVNNPQVQ RQAFNELIRVVHQLLPESLRKRKRSRC
<b>Purity (HPLC)</b>	> 98%
<b>Purity (SDS-PAGE)</b>	> 98%
<b>Biological Activity</b>	Fully biologically active when compared to standard substance. The ED <sub>50</sub> as measured in anti-viral assays using human HeLa cells infected with encephalomyocarditis (EMC) virus is 0.15~0.80 ng/ml.
<b>Host Cell DNA</b>	<0.02 ng/ $\mu$ g of protein tested by DNA Fluorescent Staining method.
<b>Host Cell Protein</b>	<0.5 ng/ $\mu$ g of protein tested by ELISA.
<b>Formulation</b>	Lyophilized from a 0.2 $\mu$ m filtered concentrated solution in PBS, pH 7.4, with 5% Trehalose, BSA-free.
<b>Sterility</b>	Negative
<b>Endotoxin</b>	< 0.1 EU/ $\mu$ g as determined by LAL gel-clot method.
<b>Mycoplasma</b>	Negative
<b>Reconstitution</b>	Before use this product, please read the direction below carefully. 1. This vial must be briefly centrifuged prior to opening to bring the contents to the bottom. 2. Reconstitute in a sterile aqueous buffer to an appropriate concentration. 3. Stock solutions should be apportioned into working aliquots and stored at $\leq -20$ °C. Further dilutions should be made in appropriate buffered solutions.
<b>Stability &amp; Storage</b>	For long term storage, the product should be stored $\leq -20$ °C. <b>Please avoid repeated freeze-thaw cycles after reconstitution.</b> 1. At least 24 months from date of receipt, $\leq -20$ as supplied; 2. 1 month, 2 to 8 °C under sterile conditions after reconstitution; 3. 3 months, -20 to -70 °C under sterile conditions after reconstitution.
<b>Shipping</b>	The product is shipped at ambient temperature. Upon receipt, store it immediately at the temperature recommended.

## DATA



## CONTENTS

Product	Cat. No.	Amount	Storage	Shelf life
Recombinant Human IFN- $\gamma$ (GMP-Grade)	GE04.1 GE04.2	100 $\mu$ g 200 $\mu$ g	$\leq -20$ °C	24 months

## LIMITED WARRANTY

BETAGENE™ Genetic and/or its affiliate(s) warrant their products as set forth in the BETAGENE Genetic' General Terms and Conditions of Sale. If you have any questions, please contact our staff at SALES@betagene.com.

The information in this guide is subject to change without notice.

**DISCLAIMER:** TO THE EXTENT ALLOWED BY LAW, BETAGENE GENETIC INC. AND/OR ITS AFFILIATE(S) WILL NOT BE LIABLE FOR SPECIAL, INCIDENTAL, INDIRECT, PUNITIVE, MULTIPLE, OR CONSEQUENTIAL DAMAGES IN CONNECTION WITH OR ARISING FROM THIS DOCUMENT, INCLUDING YOUR USE OF IT.

**Important Licensing Information:** This product may be covered by one or more Limited Use Label Licenses. By use of this product, you accept the terms and conditions of all applicable Limited Use Label Licenses.

©2022 BETAGENE Genetic Inc. All rights reserved. All trademarks are the property of BETAGENE Genetic and its subsidiaries unless otherwise specified.

