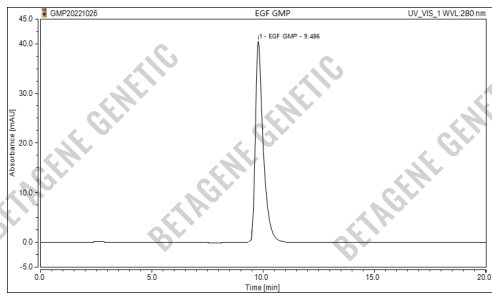


RECOMBINANT HUMAN EGF TAG-FREE GMP

Physical Appearance	Sterile Filtered White lyophilized (freeze-dried) powder.
Gene ID	1950
Description	Epidermal growth factor (EGF) is a protein that stimulates cell growth and differentiation by binding to its receptor, EGFR. It was originally discovered in the submaxillary glands of mice and in human urine, and then has been found in many human tissues. EGF stimulates the proliferation of various epidermal and epithelial cells, inhibits gastric secretion, and involves in wound healing. Recombinant human EGF is a single non-glycosylated polypeptide chain containing 53 amino acids, there are 3 intramolecular disulfide bonds in the EGF polypeptide chain and the molecular weight of EGF is 6.2kDa.
Catalog Number	GE03.1/GE03.2
Unit Size	50µg/100µg
Source	E. coli
Molecular Weight	Approximately 6.2 kDa
AA Sequence	NSDSECLSHDGYCLHDGVCMYIEALDKYACNCVVGYGICRQYRDLKWWELR
Purity (HPLC)	> 95%
Purity (SDS-PAGE)	> 95%
Biological Activity	Fully biologically active when compared to standard substance. The ED ₅₀ as determined by a cell proliferation assay using murine Balb/c 3T3 cells is less than 0.1 ng/mL, corresponding to a specific activity of > 1.0 × 10 ⁷ IU/mg
Host Cell DNA Residue	<0.02 ng/µg of protein tested by DNA Fluorescent Staining method.
Host Cell Protein Residue	<0.5 ng/µg of protein tested by ELISA.
Formulation	Lyophilized from a 0.2 µm filtered solution in PBS, pH 7.4
Sterility	Negative
Endotoxin	< 0.01EU/µg as determined by LAL gel-clot method.
Mycoplasma	Negative
Reconstitution	Before use this product, please read the direction below carefully. <ol style="list-style-type: none"> 1. This vial must be briefly centrifuged prior to opening to bring the contents to the bottom. 2. Reconstitute in a sterile aqueous buffer to an appropriate concentration. 3. Stock solutions should be apportioned into working aliquots and stored at ≤ -20 °C. Further dilutions should be made in appropriate buffered solutions.
Stability & Storage	For long term storage, the product should be stored ≤-20 °C. Please avoid repeated freeze-thaw cycles after reconstitution. <ol style="list-style-type: none"> 1. At least 24 months from date of receipt, ≤-20 °C as supplied; 2. 1 month, 2 to 8 °C under sterile conditions after reconstitution; 3. 3 months, -20 to -70 °C under sterile conditions after reconstitution.
Shipping	The product is shipped at ambient temperature. Upon receipt, store it immediately at the temperature recommended.



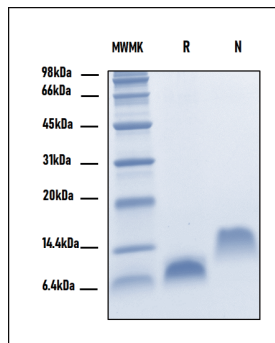
DATA



Bioactivity of Recombinant Human EGF

HPLC

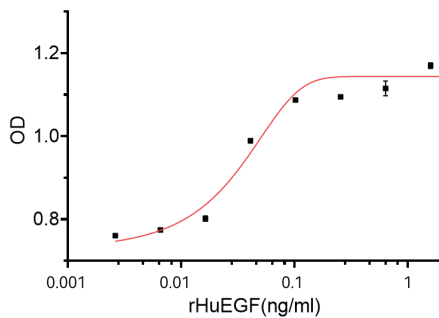
HPLC analysis of Recombinant Human EGF. The major peak corresponds to the calculated purity of >95%.



Bioactivity of Recombinant Human EGF

SDS-PAGE

2 µg/lane of Recombinant Human Recombinant EGF was resolved with SDS-PAGE under reducing (R) and non-reducing (NR) conditions and visualized by Coomassie® Blue staining, showing R band at 6.2kDa.



Bioactivity of Recombinant Human EGF

Recombinant Human EGF stimulates cell proliferation using murine Balb/c 3T3 cells and ED₅₀ as determined is < 0.1 ng/mL, corresponding to a specific activity of > 1.0 × 10⁷ IU/mg

CONTENTS

Product	Cat. No.	Amount	Storage	Shelf life
Recombinant Human EGF (GMP-Grade)	GE03.1 GE03.2	50µg 100µg	≤-20°C	24 months

LIMITED WARRANTY

BETAGENE™ Genetic and/or its affiliate(s) warrant their products as set forth in the BETAGENE Genetic' General Terms and Conditions of Sale. If you have any questions, please contact our staff at SALES@betagene.com.

The information in this guide is subject to change without notice.

DISCLAIMER: TO THE EXTENT ALLOWED BY LAW, BETAGENE GENETIC INC. AND/OR ITS AFFILIATE(S) WILL NOT BE LIABLE FOR SPECIAL, INCIDENTAL, INDIRECT, PUNITIVE, MULTIPLE, OR CONSEQUENTIAL DAMAGES IN CONNECTION WITH OR ARISING FROM THIS DOCUMENT, INCLUDING YOUR USE OF IT.

Important Licensing Information: This product may be covered by one or more Limited Use Label Licenses. By use of this product, you accept the terms and conditions of all applicable Limited Use Label Licenses.

©2022 BETAGENE Genetic Inc. All rights reserved. All trademarks are the property of BETAGENE Genetic and its subsidiaries unless otherwise specified.