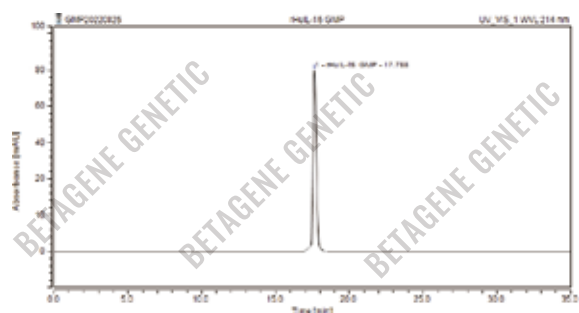


RECOMBINANT HUMAN IL-15 TAG-FREE GMP

Physical Appearance	Sterile Filtered White lyophilized (freeze-dried) powder.
Gene ID	3600
Description	IL-15 is an immunomodulating cytokine that stimulates the proliferation of T lymphocytes and shares many biological properties with IL-2. IL-15 exerts its biological activities primarily on T cells. It is also essential in the development, survival and activation of NK cells. Increased expression of IL-15 has been linked to rheumatoid arthritis, inflammatory bowel disease, and diseases affiliated with retroviruses HIV and HTLV-I. Human IL-15 is biologically active on mouse cells as measured by the dose-dependent stimulation of the proliferation of mouse CTLL cells. Recombinant Human IL-15 is a 12.9 kDa protein consisting of 114 amino acid residues.
Catalog Number	GE07.1/GE07.2
Unit Size	50µg/100µg
Source	E. coli
Molecular Weight	Approximately 12.9 kDa, 114 amino acids
AA Sequence	NWVNVISDLKIKIEDLIQSMHIDATLYTESDVHPSCVKVTAMKCFLELQVISLESQDASIHDTVENLILANNSLSSNGNVTESGCKECEELEEKNIKEFLQSFVHIVQMFINTS
Purity (HPLC)	> 97%
Purity (SDS-PAGE)	> 97%
Biological Activity	Assay 1: Measured in a cell proliferation assay using MO7e human megakaryocytic leukemia cells. The ED ₅₀ for this effect is 0.3 - 2.6 ng/mL, corresponding to a specific activity of $\geq 1.5 \times 10^8$ Units/mg. Assay 2: The ED ₅₀ as determined by the dose-dependent stimulation of the proliferation of CTLL-2 cells was found to be ≤ 0.5 ng/mL, corresponding to a specific activity of $\geq 2.0 \times 10^6$ Units/mg.
Host Cell DNA Residue	< 0.02 ng/µg of protein tested by DNA Fluorescent Staining method.
Host Cell Protein Residue	< 0.5 ng/µg of protein tested by ELISA.
Formulation	Lyophilized from a 0.2µm filtered solution in PBS, pH7.4.
Sterility	Negative
Endotoxin	< 0.01EU/µg as determined by LAL gel-clot method.
Mycoplasma	Negative
Reconstitution	Before use this product, please read the direction below carefully. 1. This vial must be briefly centrifuged prior to opening to bring the contents to the bottom. 2. Reconstitute in a sterile aqueous buffer to an appropriate concentration. 3. Stock solutions should be apportioned into working aliquots and stored at ≤ -20 °C. Further dilutions should be made in appropriate buffered solutions.
Stability & Storage	For long term storage, the product should be stored ≤ -20 °C. Please avoid repeated freeze-thaw cycles after reconstitution. 1. At least 24 months from date of receipt, ≤ -20 °C as supplied; 2. 1 month, 2 to 8 °C under sterile conditions after reconstitution; 3. 3 months, -20 to -70 °C under sterile conditions after reconstitution.
Shipping	The product is shipped at ambient temperature. Upon receipt, store it immediately at the temperature recommended.



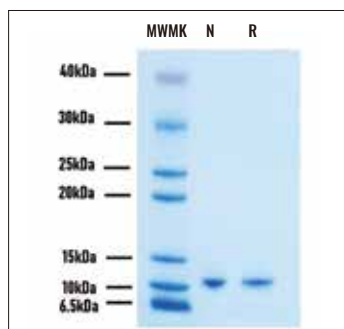
DATA



Purity of Recombinant Human IL-15

HPLC

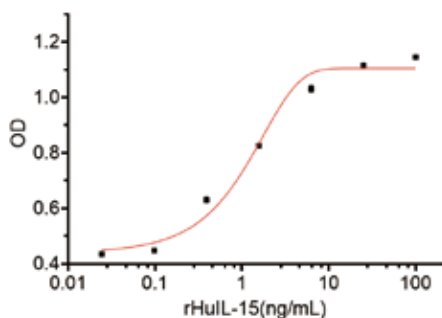
HPLC analysis of Recombinant Human IL-15. The major peak corresponds to the calculated purity of > 97%.



Purity of Recombinant Human IL-15

SDS-PAGE

2 µg/lane of Recombinant Human IL-15 was resolved with SDS-PAGE under reducing (R) and non-reducing (NR) conditions and visualized by Coomassie® Blue staining, showing R band at 13kDa.



Bioactivity of Recombinant Human IL-15

Measured in a cell proliferation assay using MO7e human megakaryocytic leukemic cells. The ED₅₀ for this effect is 0.3 - 2.6 ng/mL. The specific activity of recombinant human IL-15 is ≥ 1.5 × 10⁸ Units/mg.

CONTENTS

Product	Cat. No.	Amount	Storage	Shelf life
Recombinant Human IL-15 (GMP-Grade)	GE07.1 GE07.2	50µg 100µg	≤-20°C	24 months

LIMITED WARRANTY

BETAGENE™ Genetic and/or its affiliate(s) warrant their products as set forth in the BETAGENE Genetic' General Terms and Conditions of Sale. If you have any questions, please contact our staff at SALES@betagene.com.

The information in this guide is subject to change without notice.

DISCLAIMER: TO THE EXTENT ALLOWED BY LAW, BETAGENE GENETIC INC. AND/OR ITS AFFILIATE(S) WILL NOT BE LIABLE FOR SPECIAL, INCIDENTAL, INDIRECT, PUNITIVE, MULTIPLE, OR CONSEQUENTIAL DAMAGES IN CONNECTION WITH OR ARISING FROM THIS DOCUMENT, INCLUDING YOUR USE OF IT.

Important Licensing Information: This product may be covered by one or more Limited Use Label Licenses. By use of this product, you accept the terms and conditions of all applicable Limited Use Label Licenses.

©2022 BETAGENE Genetic Inc. All rights reserved. All trademarks are the property of BETAGENE Genetic and its subsidiaries unless otherwise specified.