

A woman with dark hair is standing on a set of stone steps in a lush garden. She is wearing a vibrant blue, two-piece outfit consisting of a halter-neck top with a cutout and a long, flowing skirt. The garden is filled with various plants, including large green spiky plants and clusters of red and pink flowers. In the background, a building with a dark door and windows is visible. The overall scene is bright and natural.

emma wallace

SS19

Eclectica personified, the NEW SS19 collection offers the ultimate mix of power and femininity for the woman who wants to stand out and be noticed, whilst maintaining an air of refined mystery.

Continuing the East meets West fusion that Emma Wallace has fast become known and loved for, the NEW collection brings together African inspiration in the form of prints, colours and pleating, and seamlessly blends with the spirit of 1920's gypsies.

A modern take on bohemia, the collection takes cues from silent movie icon Dolores Del Rio and her appearance in the 1928 classic, "Revenge". Tiered ruffle skirts and cold shoulder details nod to the freedom of the nomadic lifestyle led by the gypsies of the era, who wandered free and led a life filled with adventure and discovery.

African influences deliver an injection of colour, whilst vivid prints adorn co-ords and flowing dresses referencing the Motherland with pride. Statement pieces for the woman who wants all eyes on her!

With these references adding a flourish, the collection continues to cement the brand's commitment to asymmetric details and intricate, yet wearable cut work that shows a subtle and sophisticated flash of skin.

The brand's signature staple - the Kimono style jacket is back and reimagined with vivid African inspired embellishment adorning the shoulders and back. Paired with a matching mini-dress, this electrifying combo delivers a true 'hero' look.

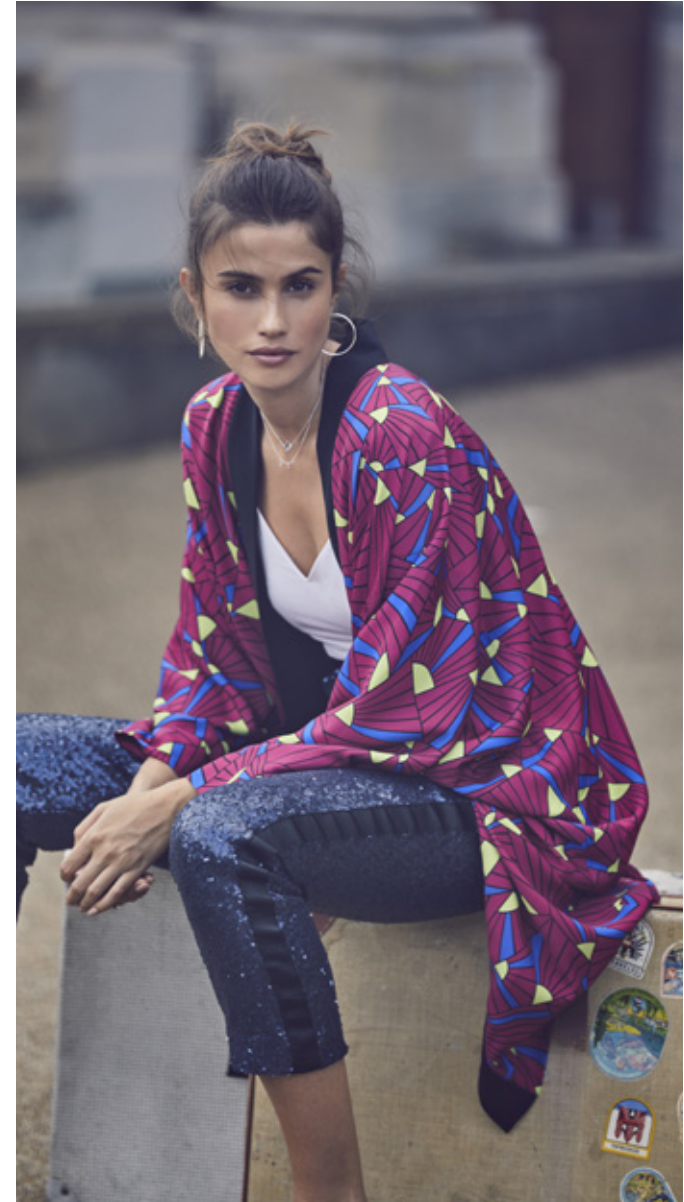
The NEW Spring/Summer 19 collection continues to showcase Emma Wallace as a destination for innovative, modern, yet exceedingly elegant formal ready-to-wear pieces. With celebrity fans including supermodel, Coco Rocha and fashionista's Bip Ling and Rosie Fortescue, these ladies epitomise the ethos of the #EmmaWallaceWoman. Women who dream of adventure and covet a collection that will take them anywhere they wish to wander. Effortlessly chic, for SS19 the Emma Wallace woman continues to dance to her own beat and showcases her style with a flair that is all her own.

*Having spent the winter months
travelling through Africa discovering
the thrill of a vibrant culture
and meeting new people, she has
returned home but
feels restless!*

*She feels forever changed
and her desire for
adventure has given
her itchy feet...*



JKS1909 **WILLA JACKET** TPS1937W **NEEMA TOP**
TRS1913 **MAI TROUSERS**



emma wallace

JSS1920B LUELLA JUMPSUIT

*Invited to attend a grand party by her
friends she captivates the crowd
with her effortless beauty.*



emma wallace

Who's that girl?

*The moment she steps into the room,
everyone is asking*



DRS1942B **ZOELLA GOWN**
(also available in white)



emma wallace

TPS1947R SKYE TOP SKS1927 CLASSIC DUNGAREE SKIRT
(both items also come in black)



emma wallace

DRS1938 ISABIS GOWN

*She hypnotizes the guests with her style,
smile and grace,
but longs for something more.*



1836

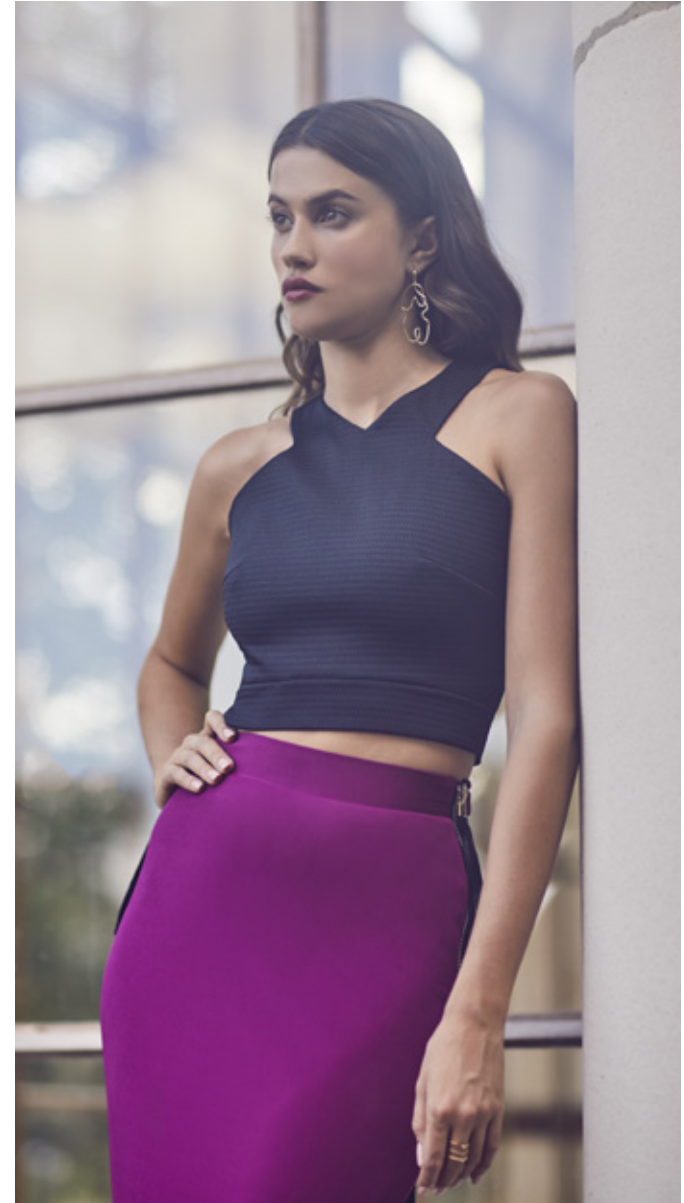
emma wallace

TPS1945 ZIA TOP SKS1925 AMALIA SKIRT

*With its formalities and excess, the party
reminds her of who she was, but not
who she longs to be.*

*She covets time with those who see the
world differently.*

Those who love adventure...



emma wallace

DRS1939P EDEN DRESS

As she steps away from the noise of the crowded party, she stumbles upon a secret gathering brimming with bohemian and filled with nomads and gypsies.



emma wallace

DRS1936 TAMALA DRESS



emma wallace

DRS1940 BRIAR DRESS

*Instantly at ease, she kicks off her
heels and loosens up to embrace
their unconventional ways.*



emma wallace

TPS1944 SUMMER TOP SKS1923 ARIYAH SKIRT

*She has always been a woman who dances to
her own beat and treads her own path.
In this setting she feels akin to their
travelling and rebellious ethos.*



emma wallace

TPS1947B SKYE TOP SKS1926 FULL DUNGAREE SKIRT



emma wallace

TPS1946 VICTORIA TOP SKS1924B KITTY MINI SKIRT

*As morning breaks, she
immerses herself in nature
to reflect.*

emma wallace

JSS1918 PREEMA JUMPSUIT



emma wallace

She feels torn.

*She loves her life, her friends and they
haven't changed, but her bohemian spirit and*

desire to see,

feel and

experience everything

the world has to offer leaves her

dreaming of more.



JSS1917W **RETA JUMPSUIT**
(also come is pink bird print)



emma wallace

TPS1943 TAYLOR TOP SKS1920 AUSTIN SKIRT



emma wallace

JSS1919P ALICE ROMPER
(also comes in bright red)



*A modern day gypsy,
she can't help dreaming of
more and longs to
transport herself to a
destination unknown.*

emma wallace

JKS1908 JAMILIA JACKET TPS1937B NEEMA TOP
SKS1921 LULU SKIRT



emma wallace



TPS1942B **JENNA TOP** (also comes in red)
SKS1922W **ADAH SKIRT** (also comes in green/turquoise)



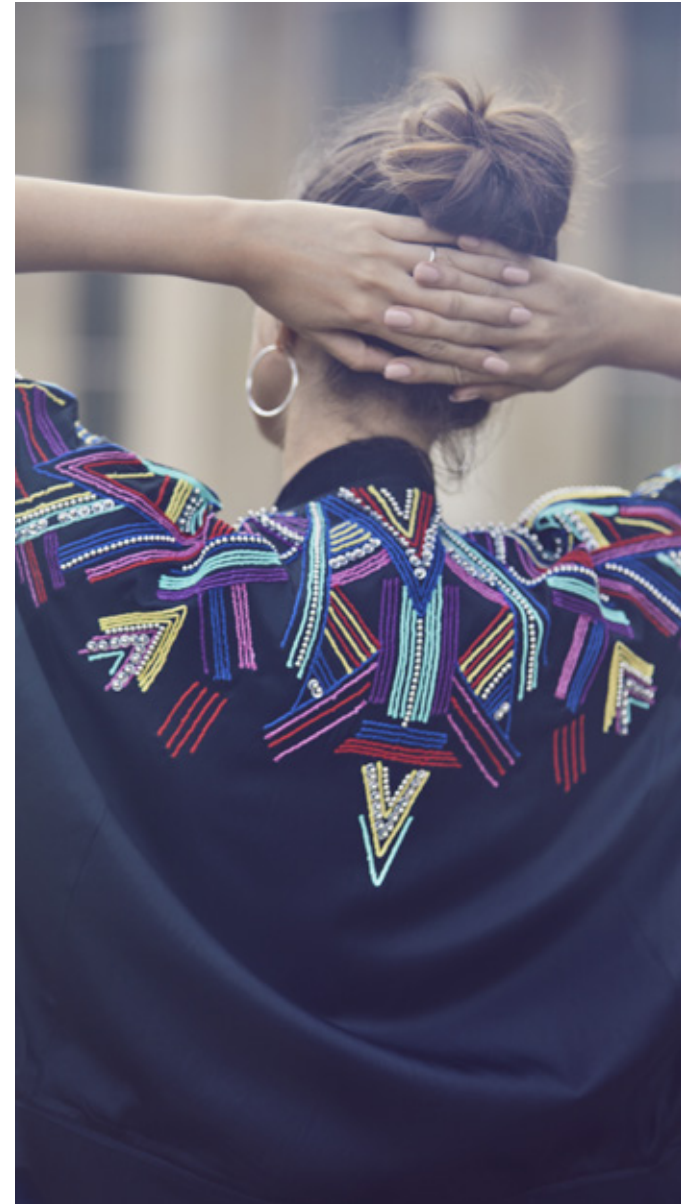
emma wallace

JKS1910 SAHARA JACKET DRS1937 JINA DRESS

*She decides now is the
time to move on.*

emma wallace

JKS1910 SAHARA JACKET DRS1937 JINA DRESS



emma wallace

TPS1941 **MARNI TOP** TRS1912P **AMALA TROUSERS**
(trousers also available in white denim)



emma wallace

*she is ready to embark on
a new journey!*



JSS1920P LUELLA JUMPSUIT



emma wallace



*Life is constantly evolving and for the
Emma Wallace Woman, home is wherever
her heart and mind takes her...*



TPS1940 ZURI SHIRT SHS1903 KALI SHORT



emma wallace

EMMA-WALLACE.COM

Angela Lau
Sales and Marketing Manager
(+852) 23366798
angela@emma-wallace.com

Mischa Joslin
Public Relations Manager
+44 (0)203 745 6960