

A woman with long brown hair is captured in motion, running across a wide, curved stone terrace. She is wearing a two-piece outfit consisting of a halter-neck crop top and a long, flowing skirt, both featuring a vibrant floral pattern in shades of purple, red, and blue. Her hair is blowing in the wind, and she is looking back over her shoulder. The terrace is made of light-colored stone blocks and has a low, curved wall. In the background, a vast, hazy landscape of rolling hills and mountains stretches under a clear blue sky. The overall scene conveys a sense of freedom and movement.

emma wallace

AW18

The spirited 'fusion feminist' returns for Autumn/Winter 18, with a collection that seamlessly combines bold statement pieces with whimsical touches for the woman who wants to create impact, whilst maintaining her feminine edge.

Showcasing the East meets West fusion that Emma Wallace has fast become known and loved for, the NEW collection unites romantic inspiration from vintage French moments, with influences from vibrant Vietnam.

Playful decadence and theatre come into play, with the spirit of Marie Antoinette and the stunning gardens of Versailles acting as a muse for the new season. This vintage western influence can be seen in the bow belt details, full skirts and voluminous sleeves, whilst floral prints in regal purple hues bring the garden landscape to life.

Moving East, inspiration has been taken from the city of Hôï An Vietnam and the ancient town's lanterns, delivering a vivid injection of colour which can be seen in the pops of blue and red. With blue representing hope and growth in traditional Vietnamese culture, and red meaning happiness, luck and celebration, this is a collection that will both inspire and empower.

Wrap detail with an almost origami essence takes note from the traditional costumes worn in Vietnam, whilst the collection continues to cement the brand's commitment to asymmetric details and intricate, yet wearable cut work that shows a subtle flash of skin, for the sophisticated woman who wants to stand out.

The brand's signature staple - the Kimono style jacket continues on, this time reimaged for autumn/winter with exquisite embroidered embellishment to deliver a true 'hero' piece. The element of embroidery continues throughout, with Shisha mirror work taking the Eastern inspiration to a new level.

A true evolution for Emma Wallace, the Autumn/Winter 18 collection continues to cement the designer as the 'go to' for innovative, modern, yet exceedingly elegant formal ready-to-wear pieces.

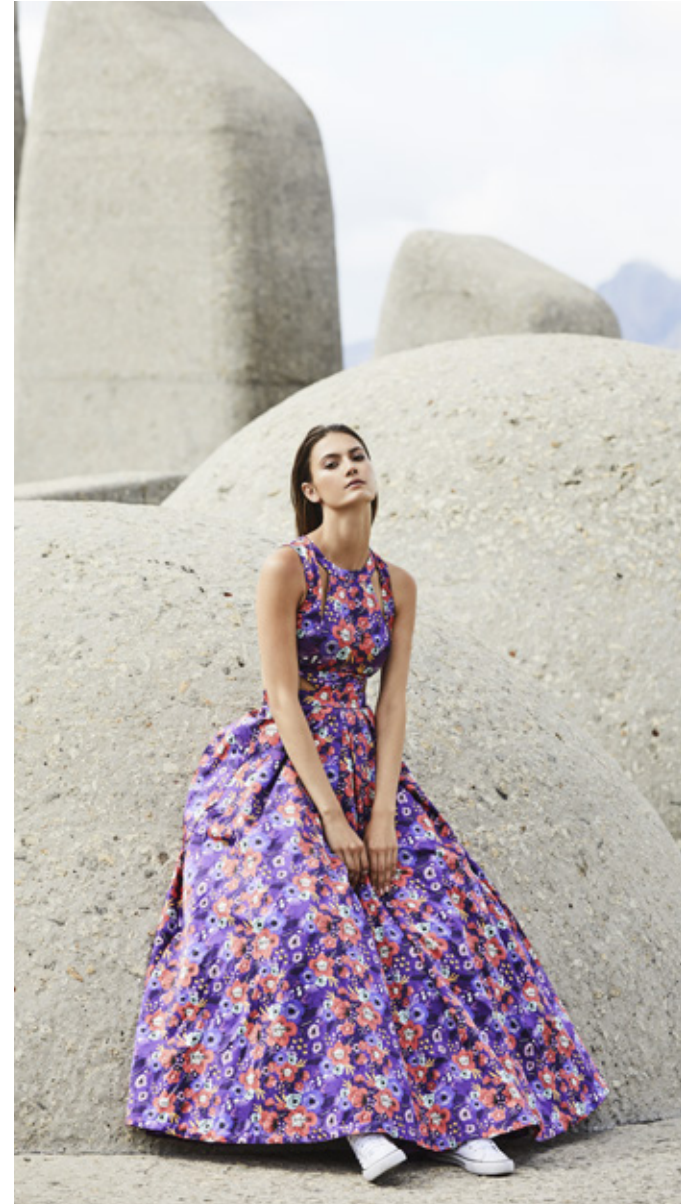
TPA1835B CINDER TOP TRA1809P MAI TROUSER



emma wallace



DRA1830 ABELLA GOWN



emma wallace

TPA1827B ADALIE TOP SKA1818P LAN SKIRT



emma wallace

TPA1832 JOAN BLOUSE TPA1828 NHU TOP
SKA1815 THANH SKIRT



emma wallace



TPA1829W ELICIA TOP SKA1818M LAN SKIRT



emma wallace

DRA1835 THIEN DRESS



emma wallace

TPA1835W CINDER TOP DRA1832P LUCIENNE DRESS



emma wallace

TPA1831O TIEN GOWN



emma wallace

TPA1830 CAM JUMPER SKA1819 KIM SKIRT



emma wallace

JKA1807 BAYLIE COAT TRA1808 DENYSE TROUSERS



emma wallace

TPA1829B ELICIA TOP SKA1816 EUGENIE SKIRT



emma wallace



TPA1833S YEN TOP SKA1817 AMALIE SKIRT



emma wallace

DRA1832B LUCIENNE DRESS



emma wallace

DRA1834 CECILLE DRESS



emma wallace

DRA1833B HOA DRESS



emma wallace

JKA1806 VINH JACKET TPA1831 MARIEANNE TOP
TRA1809B MAI TROUSERS



emma wallace



JSA1815 AN JUMPSUIT



emma wallace

JSA1816 TUYEN JUMPSUIT



emma wallace

TPA1834W TANYA TEE TRA1810 HUONG TROUSERS



emma wallace

DRA1831W TIEN GOWN



emma wallace



DRA1833W HOA DRESS



emma wallace

EMMA-WALLACE.COM

Angela Lau
Sales and Marketing Manager
(+852) 23366798
angela@emma-wallace.com

Mischa Joslin
Public Relations Manager
+44 (0)203 745 6960
Mischa.joslin@edencancan.com