

OPTEL THEVON

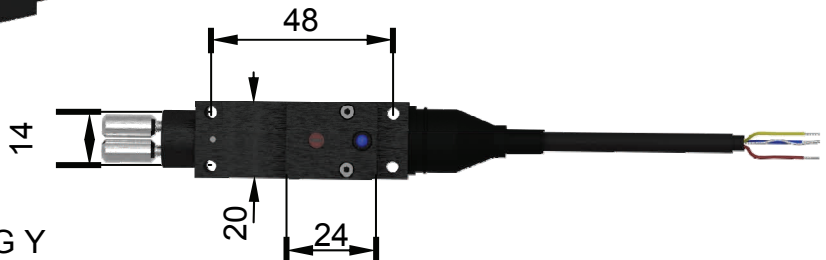
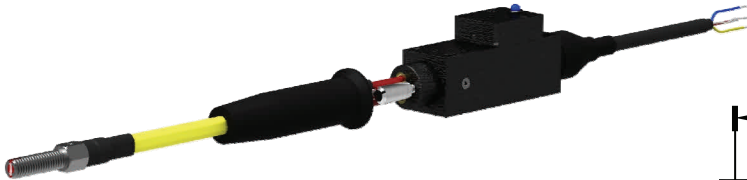
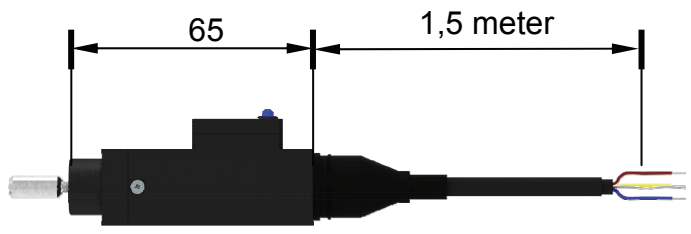
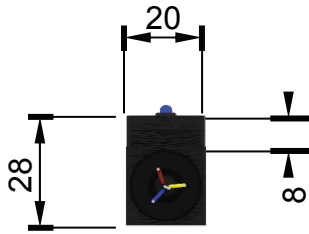
Advanced Sensor for Desing, Testing, Analysis of engines & Rotating equipments

- Optical fibre sensor for **rotating** machinery testing
- High **speed** Opto-Fibre Amplifier
- Interference-free
- Contact-less
- New Evolution** 260 Khz
- Square wave output signal
- Multi-Purpose Sensor
- Torsional vibrations** analysis
- Acyclime** Reference sensor

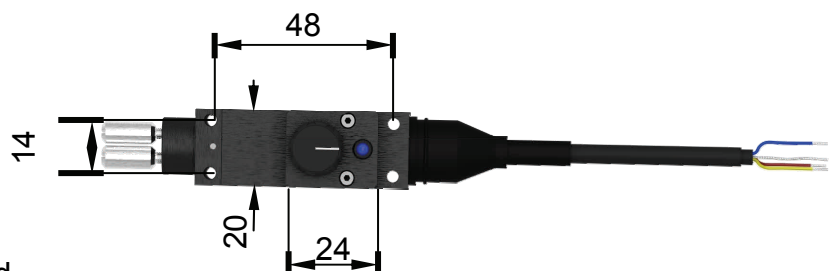
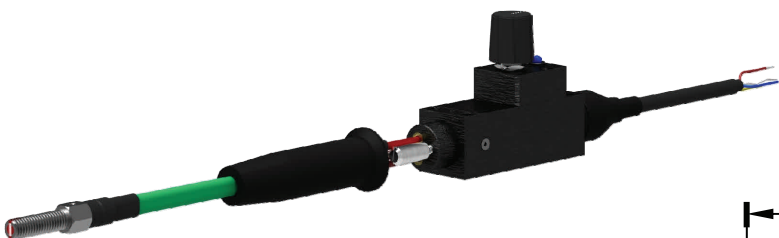
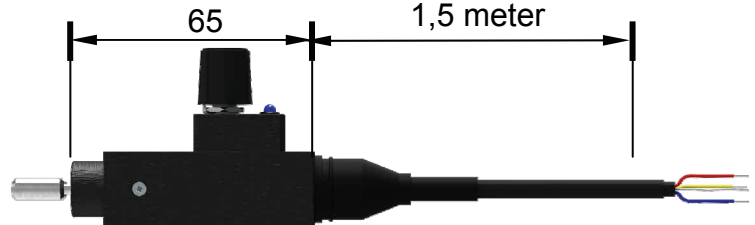
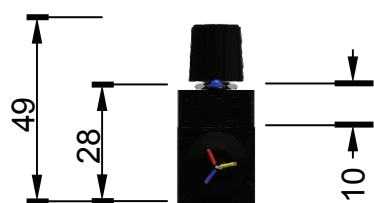


**Tacho-Sensor
260 KHz**

TECHNICAL CHARACTERISTICS	152 G7 TTL & 152 G7 GPK TTL
RANGE : see optical fibre datas	Recommended range*
Diffuse reflection: $D=f(\text{resolution})=*\text{f}(\text{Albedo})$	$1\text{mm} < \mathbf{D} < 5\text{mm}$ (black&white) for more see optical boosters or reflectives tapes
Through-beam	40mm, more with objectives lens
ELECTRICAL SPECIFICATIONS	
Transmitter	LED near I.R.+Visible
Receiver (light sensitive)	High-speed component
Outputs	Standart 5V TTL others on request
Supply voltage	12 Vcc / 24 Vcc / limit from 9 to 30 Vcc
Current Consumption 12VCC	<100 mA
Connection	1.5 m cable
Frequency	$0 < \mathbf{F} < 260 \text{ KHz}$ TTL
Rise time / Fall time (80% measured form)	Rise time: <100 nanosec./ Fall time: ≤ 1 microsec.
Output control	Blue LED + top of fibre red light
Amplifier's temperature (Dry conditions)	From -10 °C To +50°C
Electrical Protection	Temporary
Sensitivity adjustment	Potentiometer $\frac{3}{4}$ circling
MECHANICAL SPECIFICATIONS	
Box	AU4G Anodised
Mass	150 g
Shape and setting	14X48 mm, Hole \varnothing 3mm
OPTICAL PROBES	
Through-beam standard / <i>slit ending fibre probe</i>	MultiFFO / <i>Multi SLIT FFO</i>
Diffuse reflection standard / <i>slit ending fibre probe</i>	MultiYO / <i>Multi SLIT YO</i>
Temperature Range	$-5^{\circ}\text{C} < \text{long life} < 80^{\circ}\text{C}$ $-50^{\circ}\text{C} < \text{limit} < +120^{\circ}\text{C}$
high θ probe	On Specification
Objectives lens	On Specification
Phonic wheel/ Sticky backed encoders	On Specification
Ending probes	Y / FF / TBY / TBFF / thread / SLIT
Phone:+33148575833 Fax:+33142870088	
2015-06-02	
www.optel-thevon.eu	info@optel-thevon.fr



Probe separatly sold
MULTI SLIT YO HM6x20 SURG Y

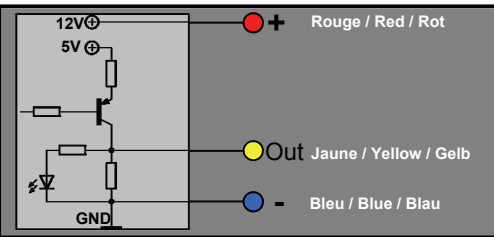


Probe separatly sold
MULTI SLIT YO HM6x20 SURG G

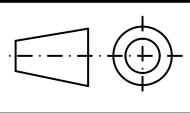
This characteristics are not of contractual matters. OPTEL-THEVON keeps the right to alterations of improvements without any previous notice.



OPTEL THEVON
104 Rue de Rosny
F-93 100 MONTREUIL
Tèl : +33(0)1 485 758 33
Fax : +33(0)1 428 700 88
info@optel-thevon.fr
www.optel-thevon.eu



Material
Anodized aluminium



Date
2015 05 30

Reference
152 G7 TTL / 152 G7 GP K TTL