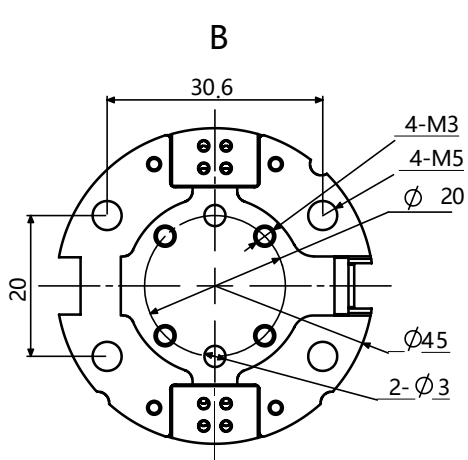




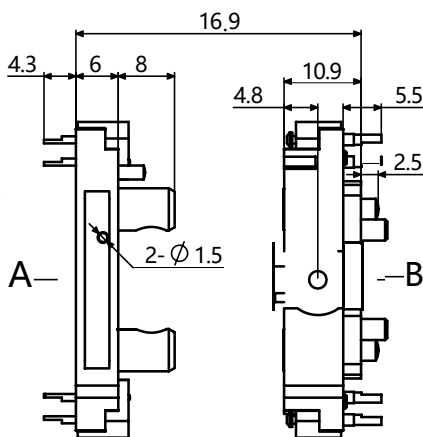
# KDK Quick Chnage System

[www.gree-ge.com](http://www.gree-ge.com)

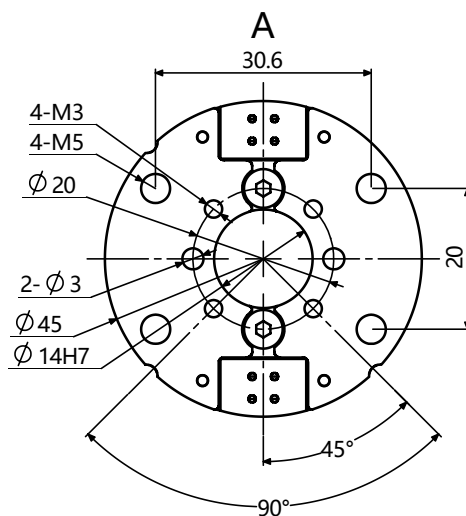
### Outline Dimension



KDR-001



KDK-001

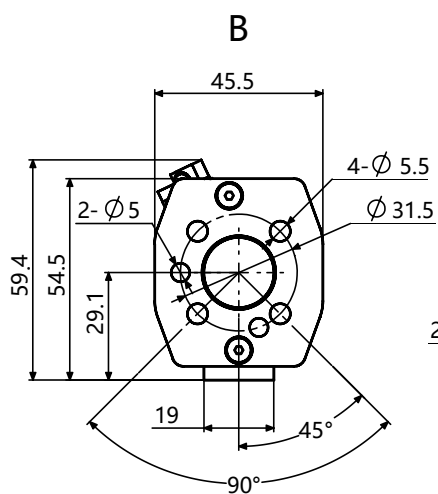


KDG-001

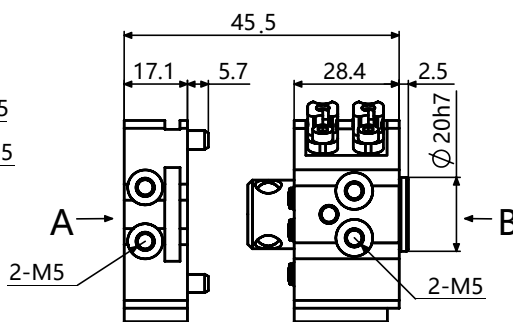
## Specification

Series		KDR-001	KDG-001
		Quick-change master	Quick-change adapter
Recommended handling weight	[kg]	1.4	1.4
Locking force	[N]	170	170
Repeat accuracy	[mm]	0.01	0.01
Weight	[kg]	0.08	0.04
Max. distance when locking	[mm]	1	1
Air connection thread pneumatic feed-through		4x M5	4x M5
Lock/unlock main connection		M3	/
Number of electrical feed-throughs		8	8
Voltage	[V]	50	50
Max. current	[A]	3	3
Max. permissible XY axis offset	[mm]	±0.3	±0.3
Max. permissible angular offset	[°]	±0.8	±0.8
Min. /Max. ambient temperature	[°C]	5/60	5/60
Min. /Max. operating pressure	[bar]	4.5/6.9	4.5/6.9
Diameter D x Height Z	[mm]	45 x 10.9	45 x 6

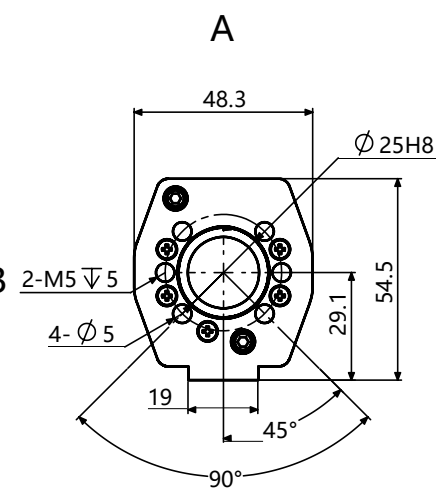
**Outline Dimension**



KDR 007



KDK 007

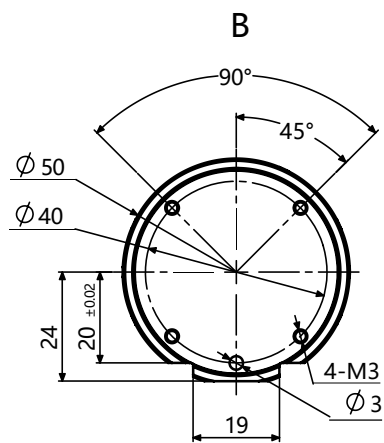


KDG 007

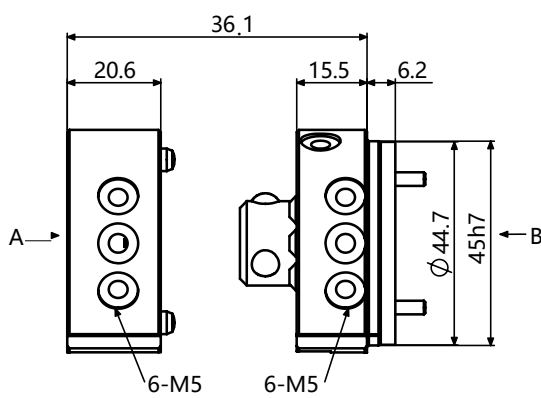
## Specification

Series		KDR-007	KDG-007
		Quick-change master	Quick-change adapter
Recommended handling weight	[kg]	16	16
Piston stroke monitoring		integrated	/
Locking force	[N]	1100	1100
Repeat accuracy	[mm]	0.015	0.015
Weight	[kg]	0.16	0.08
Max. distance when locking	[mm]	3	3
Air connection thread pneumatic feed-through		5x M5	5x M5
Lock/unlock main connection		M5	/
Max. permissible XY axis offset	[mm]	±1	±1
Max. permissible angular offset	[°]	±2	±2
Robot-side connection		ISO 9409-1-31.5-4-M5	ISO 9409-1-31.5-4-M5
Min. /Max. ambient temperature	[°C]	5/60	5/60
Min. /Max. operating pressure	[bar]	4.5/6.9	4.5/6.9
Length X *Width Y*Height Z	[mm]	54.5 x 45.5 x 28.4	54.5 x 48.3 x 17.1

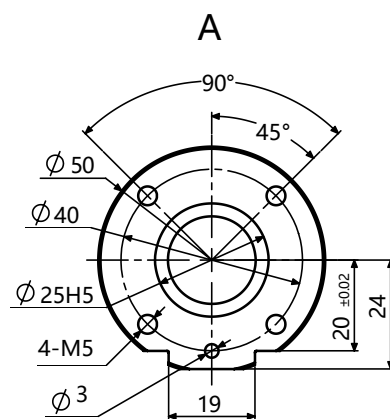
**Outline Dimension**



KDR 011



KDK 011

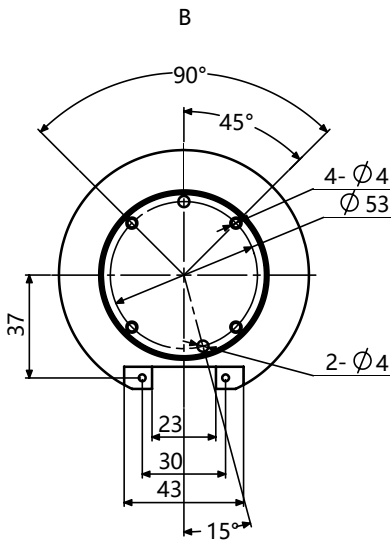


KDG 011

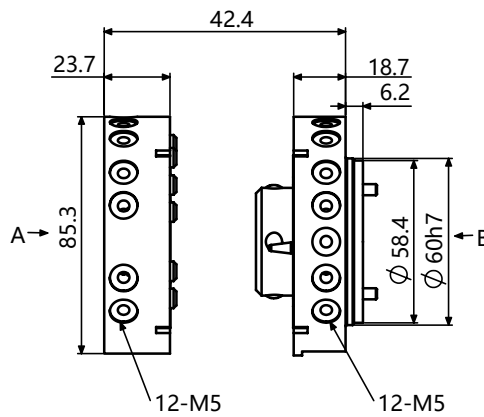
## Specification

Series		KDR-011	KDR-011A	KDG-011
		Quick-change master	suit for quick-change master of hollow wrist robot	Quick-change adapter
Recommended handling weight	[kg]	16	16	16
Piston stroke monitoring		Options	integrated	/
Locking force	[N]	1100	1100	1100
Repeat accuracy	[mm]	0.015	0.015	0.015
Weight	[kg]	0.13	0.29	0.09
Max. distance when locking	[mm]	3	3	3
Air connection thread pneumatic feed-through		6x M5	6x M5	6x M5
Lock/unlock main connection		M5	M5	/
Max. permissible XY axis offset	[mm]	±1	±1	±1
Max. permissible angular offset	[°]	±2	±2	±2
Min. /Max. ambient temperature	[°C]	5/60	5/60	5/60
Min. /Max. operating pressure	[bar]	4.5/6.9	4.5/6.9	4.5/6.9
Diameter D x Height Z	[mm]	50 x 15.5	50 x 46.4	50 x 20.6

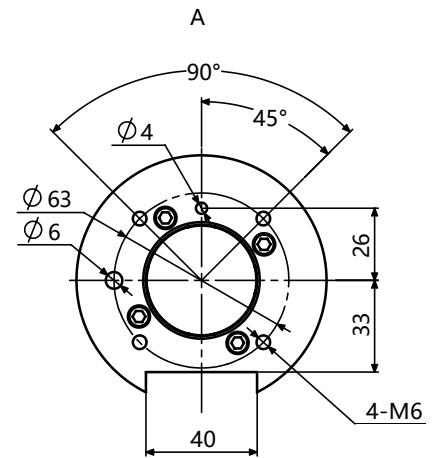
### Outline Dimension



KDR-020



KDK-020



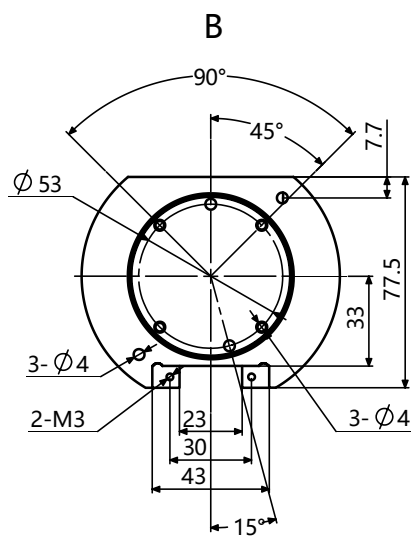
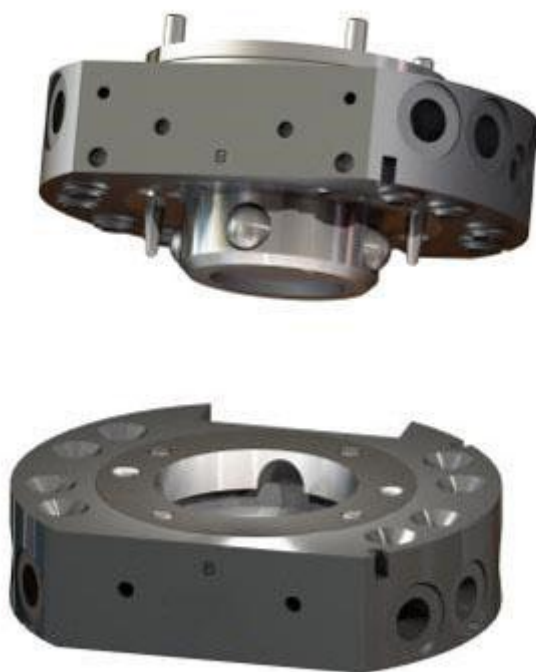
KDG-020



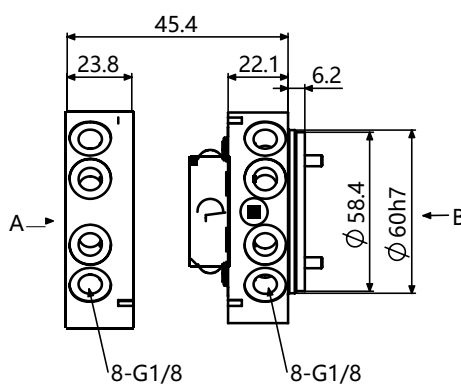
**Specification**

Series		KDR-020	KDR-020A	KDG-020
		Quick-change master	suit for quick-change master of hollow wrist robot	Quick-change adapter
Recommended handling weight	[kg]	25	25	25
Piston stroke monitoring		Options	integrated	/
Locking force	[N]	2300	2300	2300
Repeat accuracy	[mm]	0.015	0.015	0.015
Weight	[kg]	0.54	0.68	0.32
Max. distance when locking	[mm]	3	3	3
Air connection thread pneumatic feed-through		12x M5	12x M5	12x M5
Lock/unlock main connection		M5	M5	/
Max. permissible XY axis offset	[mm]	±1	±1	±1
Max. permissible angular offset	[°]	±2	±2	±2
Min. /Max. ambient temperature	[°C]	5/60	5/60	5/60
Min. /Max. operating pressure	[bar]	4.5/6.9	4.5/6.9	4.5/6.9
Diameter D x Height Z	[mm]	90 x 18.7	90 x 46	90 x 23.7

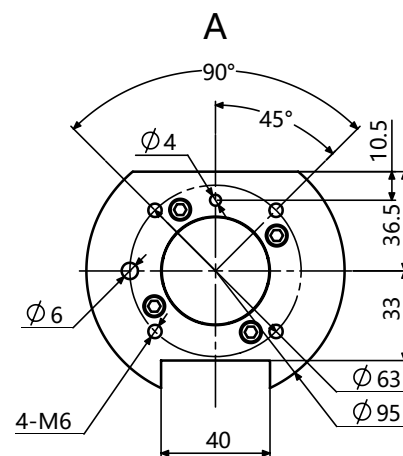
### Outline Dimension



KDR-021



KDK-021

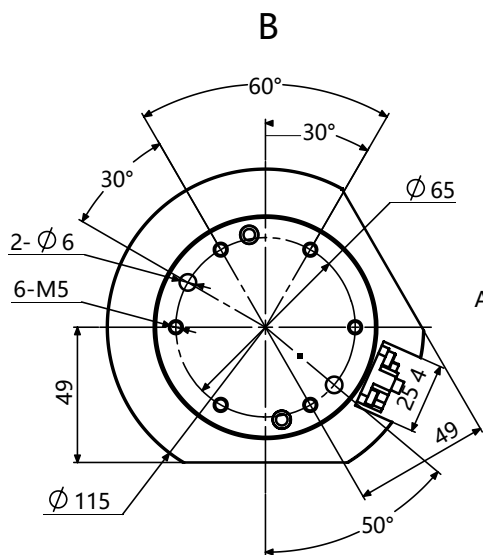


KDG-021

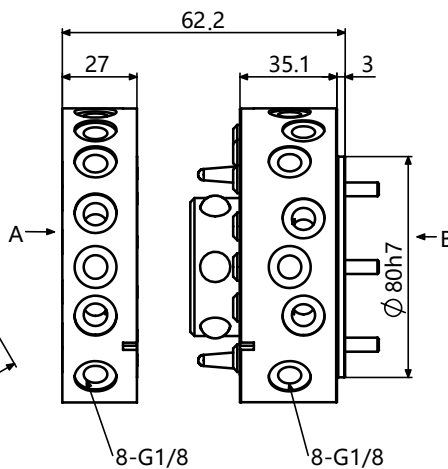
**Specification**

Series		KDR-021	KDR-021A	KDG-021
		Quick-change master	suit for quick-change master of hollow wrist robot	Quick-change adapter
Recommended handling weight	[kg]	25	25	25
Piston stroke monitoring		Options	integrated	/
Locking force	[N]	2300	2300	2300
Repeat accuracy	[mm]	0.015	0.015	0.015
Weight	[kg]	0.5	0.7	0.3
Max. distance when locking	[mm]	3	3	3
Air connection thread pneumatic feed-through		8x G1/8"	8x G1/8"	8x G1/8"
Lock/unlock main connection		M5	M5	/
Max. permissible XY axis offset	[mm]	±1	±1	±1
Max. permissible angular offset	[°]	±1	±1	±1
Min. /Max. ambient temperature	[°C]	5/60	5/60	5/60
Min. /Max. operating pressure	[bar]	4.5/6.9	4.5/6.9	4.5/6.9
Diameter D x Height Z	[mm]	95 x 22.1	95 x 58.9	95 x 23.8

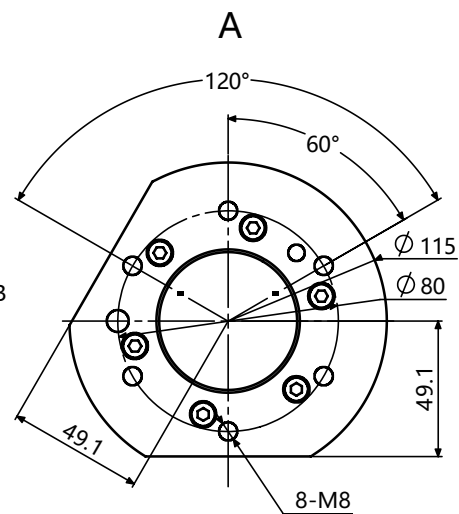
**Outline Dimension**



KDR-040



KDK-040

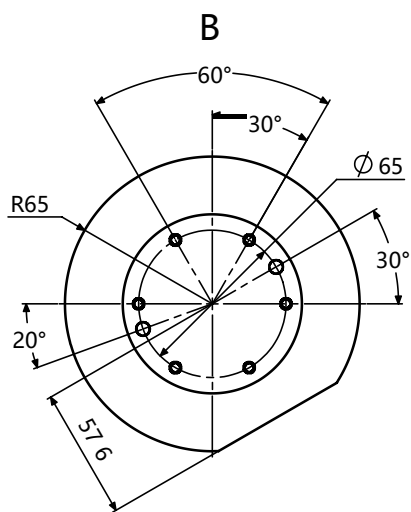


KDG-040

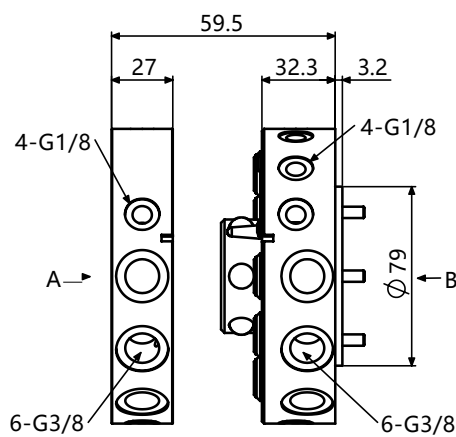
## Specification

Series		KDR-040	KDG-040
		Quick-change master	Quick-change adapter
Recommended handling weight	[kg]	50	50
Piston stroke monitoring		integrated	/
Locking force	[N]	5650	5650
Repeat accuracy	[mm]	0.015	0.015
Weight	[kg]	1.27	0.6
Max. distance when locking	[mm]	3	3
Air connection thread pneumatic feed-through		8x G1/8"	8x G1/8"
Lock/unlock main connection		G1/8"	/
Max. permissible XY axis offset	[mm]	±2	±2
Max. permissible angular offset	[°]	±2	±2
Min. /Max. ambient temperature	[°C]	5/60	5/60
Min. /Max. operating pressure	[bar]	4.5/6.9	4.5/6.9
Diameter D x Height Z	[mm]	115 x 35.2	115 x 27.1

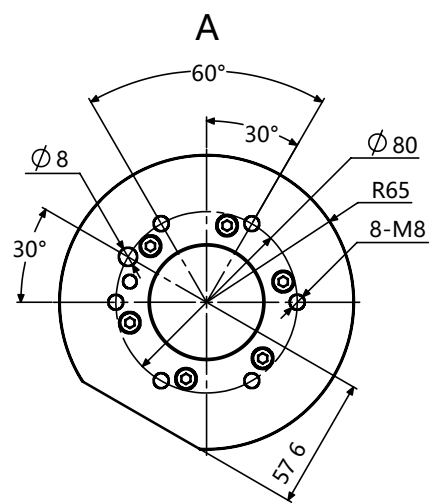
**Outline Dimension**



KDR-041



KDK-041

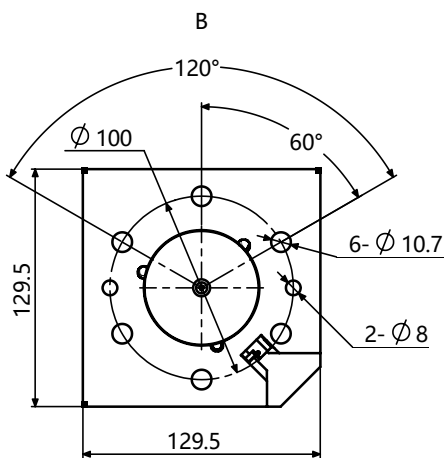
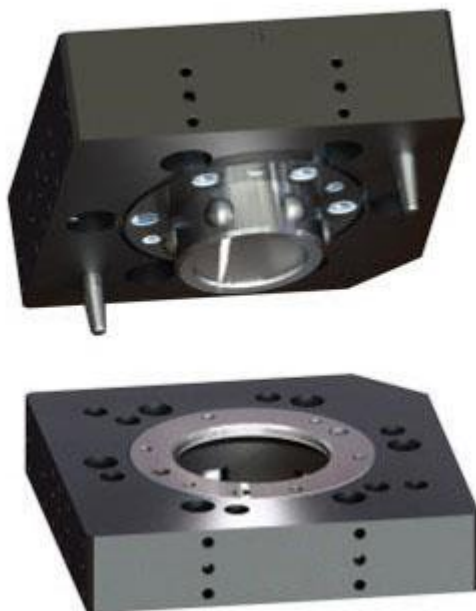


KDG-041

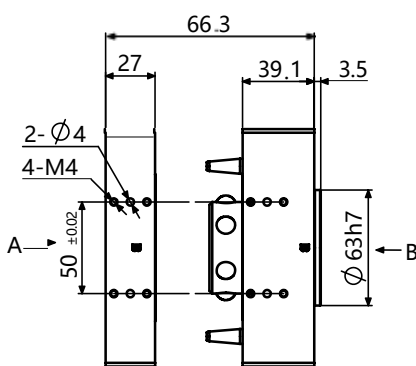
**Specification**

Series		KDR-041	KDG-041
		Quick-change master	Quick-change adapter
Recommended handling weight	[kg]	50	50
Piston stroke monitoring		Options	/
Locking force	[N]	4500	4500
Repeat accuracy	[mm]	0.015	0.015
Weight	[kg]	1.4	0.7
Max. distance when locking	[mm]	3	3
Air connection thread pneumatic feed-through		6x G3/8"	6x G3/8"
Air connection thread pneumatic feed-through		4x G1/8"	4x G1/8"
Lock/unlock main connection		G1/8"	/
Max. permissible XY axis offset	[mm]	±2	±2
Max. permissible angular offset	[°]	±2	±2
Min. /Max. ambient temperature	[°C]	5/60	5/60
Min. /Max. operating pressure	[bar]	4.5/6.9	4.5/6.9
Diameter D x Height Z	[mm]	130 x 32.3	130 x 27

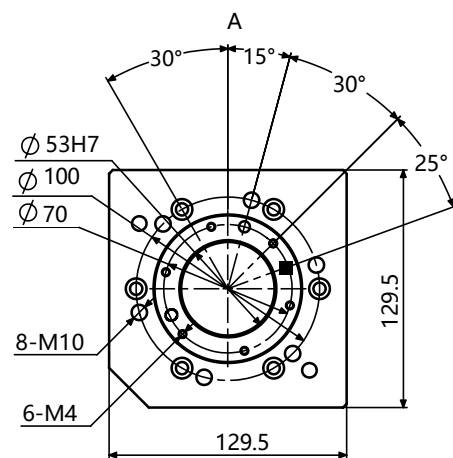
Outline Dimension



KDR-046



KDK-046



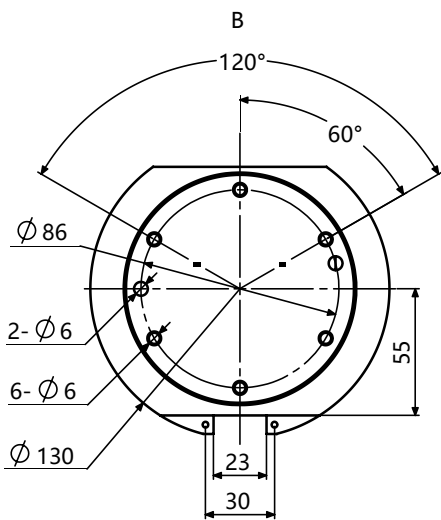
KDG-046



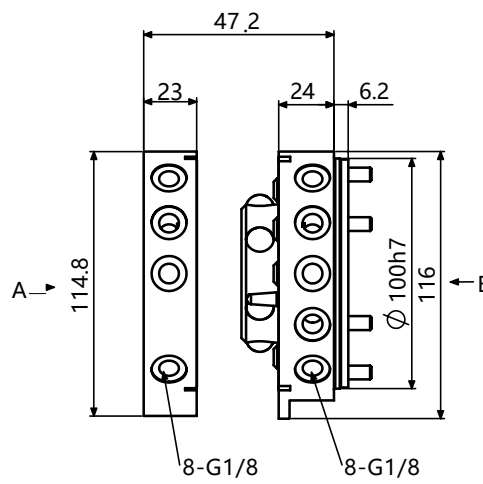
**Specification**

Series		KDR-046	KDG-046
		Quick-change master	Quick-change adapter
Recommended handling weight	[kg]	50	50
Piston stroke monitoring		integrated	/
Locking force	[N]	5800	5800
Repeat accuracy	[mm]	0.015	0.015
Weight	[kg]	1.95	1.03
Max. distance when locking	[mm]	2.5	2.5
Lock/unlock main connection		G1/8"	/
Max. permissible XY axis offset	[mm]	±1.5	±1.5
Max. permissible angular offset	[°]	±2	±2
Robot-side connection		ISO 9409-1-100-6-M8	ISO 9409-1-100-6-M8
Min. /Max. ambient temperature	[°C]	5/60	5/60
Min. /Max. operating pressure	[bar]	4.5/6.9	4.5/6.9
Length X *Width Y*Height Z	[mm]	129.5 x 129.5 x 39.1	129.5 x 129.5 x 27

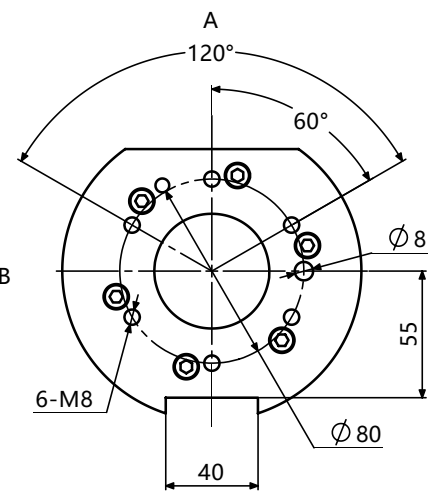
### Outline Dimension



KDR-060



KDK-060

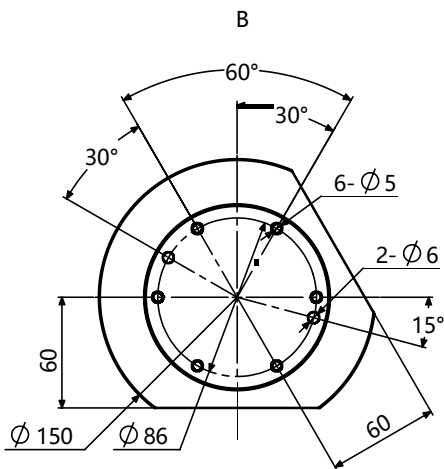


KDG-060

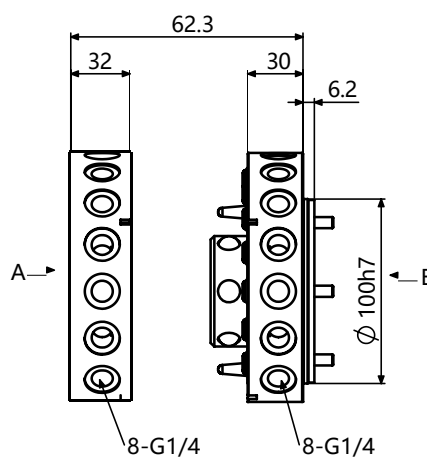
## Specification

Series		KDR-060	KDG-060
		Quick-change master	Quick-change adapter
Recommended handling weight	[kg]	75	75
Piston stroke monitoring		Options	/
Locking force	[N]	7400	7400
Repeat accuracy	[mm]	0.015	0.015
Weight	[kg]	1.3	3
Max. distance when locking	[mm]	3	0.7
Air connection thread pneumatic feed-through		8x G1/8"	8x G1/8"
Lock/unlock main connection		G1/8"	/
Max. permissible XY axis offset	[mm]	±2	±2
Max. permissible angular offset	[°]	±1	±1
Min. /Max. ambient temperature	[°C]	5/60	5/60
Min. /Max. operating pressure	[bar]	4.5/6.9	4.5/6.9
Diameter D x Height Z	[mm]	130 x 24.1	130 x 23.1

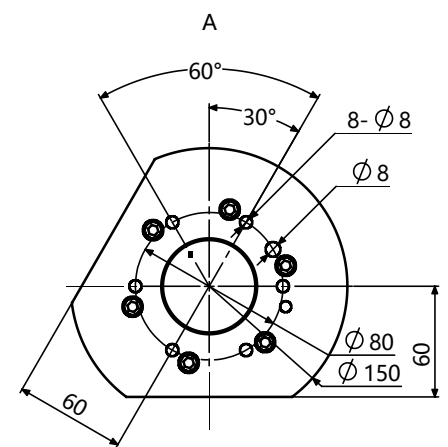
### Outline Dimension



KDR-071



KDK-071

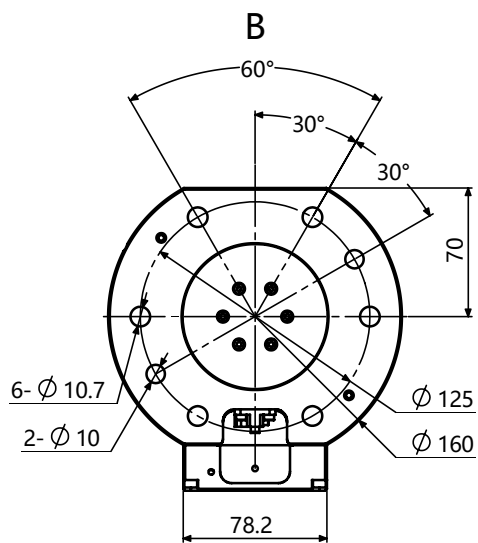


KDG-071

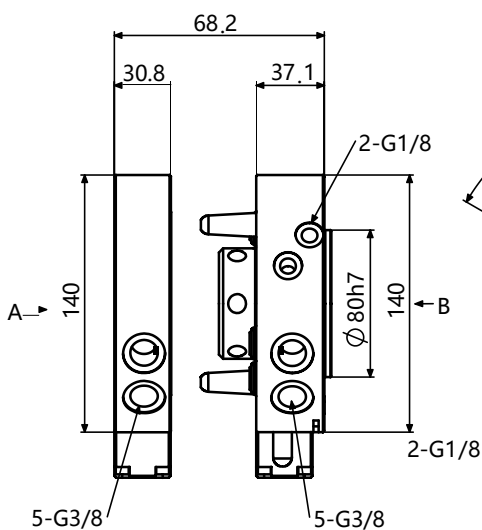
## Specification

Series		KDR-071	KDG-071
		Quick-change master	Quick-change adapter
Recommended handling weight	[kg]	79	79
Piston stroke monitoring		Options	/
Locking force	[N]	8100	8100
Repeat accuracy	[mm]	0.015	0.015
Weight	[kg]	1.8	1.3
Max. distance when locking	[mm]	3	3
Air connection thread pneumatic feed-through		8x G1/4"	8x G1/4"
Lock/unlock main connection		G1/8"	/
Max. permissible XY axis offset	[mm]	±2	±2
Max. permissible angular offset	[°]	±1	±1
Min. /Max. ambient temperature	[°C]	5/60	5/60
Min. /Max. operating pressure	[bar]	4.5/6.9	4.5/6.9
Diameter D x Height Z	[mm]	150 x 30.2	150 x 32.1

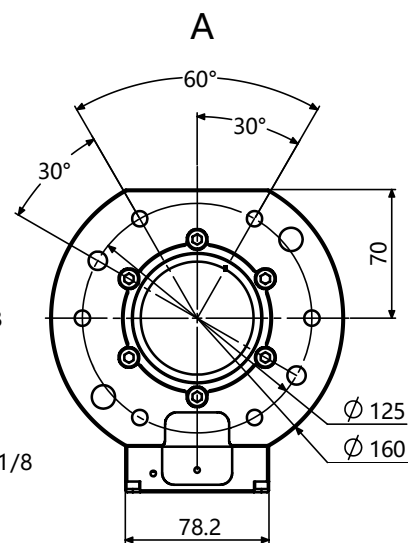
### Outline Dimension



KDR-076



KDK-076

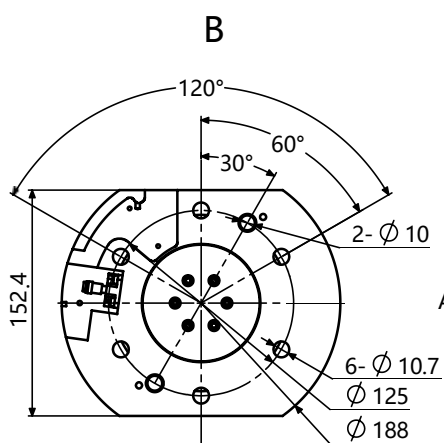


KDG-076

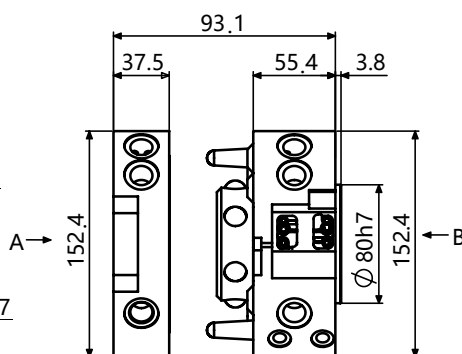
## Specification

Series		KDR-007	KDG-007
		Quick-change master	Quick-change adapter
Recommended handling weight	[kg]	100	100
Piston stroke monitoring		integrated	/
Locking force	[N]	12000	12000
Repeat accuracy	[mm]	0.015	0.015
Weight	[kg]	2.25	1.43
Max. distance when locking	[mm]	2	2
Air connection thread pneumatic feed-through		5x G3/8"	5x G3/8"
Lock/unlock main connection		G1/8"	/
Max. permissible XY axis offset	[mm]	±1	±1
Max. permissible angular offset	[°]	±1	±1
Robot-side connection		ISO 9409-1-125-6-M10	ISO 9409-1-125-6-M10
Min. /Max. ambient temperature	[°C]	5/60	5/60
Min. /Max. operating pressure	[bar]	4.5/6.9	4.5/6.9
Length X *Width Y*Height Z	[mm]	160 x 37.3	160 x 30.9

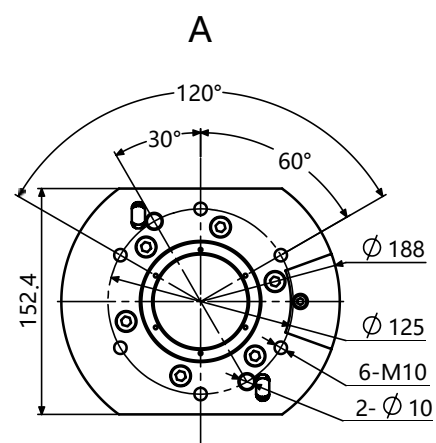
### Outline Dimension



KDR-110



KDK-110



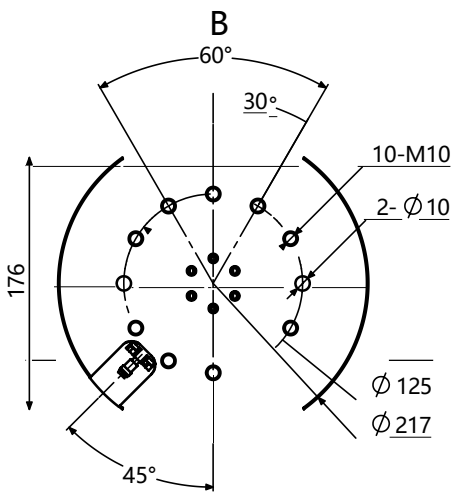
KDG-110



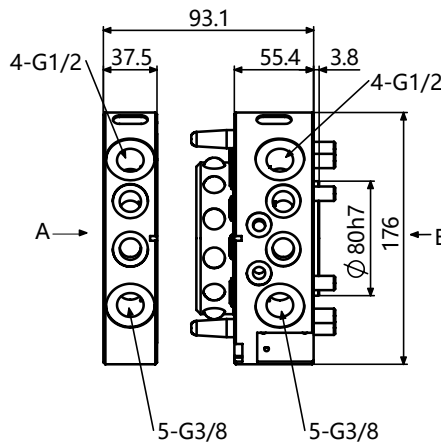
## Specification

Series		KDR-110	KDG-110
		Quick-change master	Quick-change adapter
Recommended handling weight	[kg]	150	150
Piston stroke monitoring		integrated	/
Locking force	[N]	12000	12000
Repeat accuracy	[mm]	0.015	0.015
Weight	[kg]	4	2.2
Max. distance when locking	[mm]	3	3
Air connection thread pneumatic feed-through		8x G3/8"	8x G3/8"
Lock/unlock main connection		G1/8"	/
Max. permissible XY axis offset	[mm]	±2	±2
Max. permissible angular offset	[°]	±1	±1
Robot-side connection		ISO 9409-1-125-6-M10	ISO 9409-1-125-6-M10
Min. /Max. ambient temperature	[°C]	5/60	5/60
Min. /Max. operating pressure	[bar]	4.5/6.9	4.5/6.9
Length X *Width Y*Height Z	[mm]	188 x 55.5	188 x 37.6

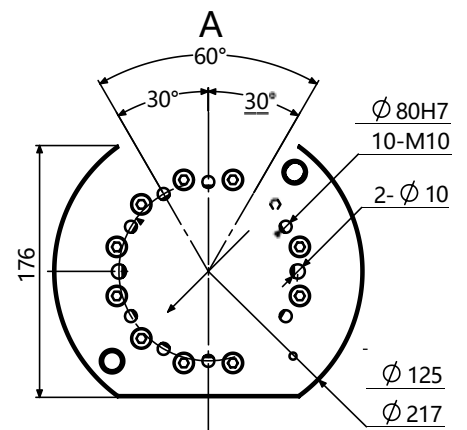
**Outline Dimension**



KDR-160



KDK-160



KDG-160

**Specification**

Series		KDR-160	KDG-160
		Quick-change master	Quick-change adapter
Recommended handling weight	[kg]	300	300
Piston stroke monitoring		integrated	/
Locking force	[N]	31000	31000
Repeat accuracy	[mm]	0.015	0.015
Weight	[kg]	6.44	2.86
Max. distance when locking	[mm]	2.54	2.54
Air connection thread pneumatic feed-through		5x G3/8"	5x G3/8"
Air connection thread pneumatic feed-through		4x G1/2"	4x G1/2"
Lock/unlock main connection		G1/8"	/
Max. permissible XY axis offset	[mm]	±2	±2
Max. permissible angular offset	[°]	±1	±1
Robot-side connection		ISO 9409-1-125-10-M10	ISO 9409-1-125-10-M10
Min. /Max. ambient temperature	[°C]	5/60	5/60
Min. /Max. operating pressure	[bar]	4.5/6.9	4.5/6.9
Diameter D x Height Z	[mm]	217 x 55.5	217 x 37.6



☎ 150-8495-8866

📍 Building B, Jianyuanzhichuangyuan, Baoan District, Shenzhen City, Guangdong Province, China