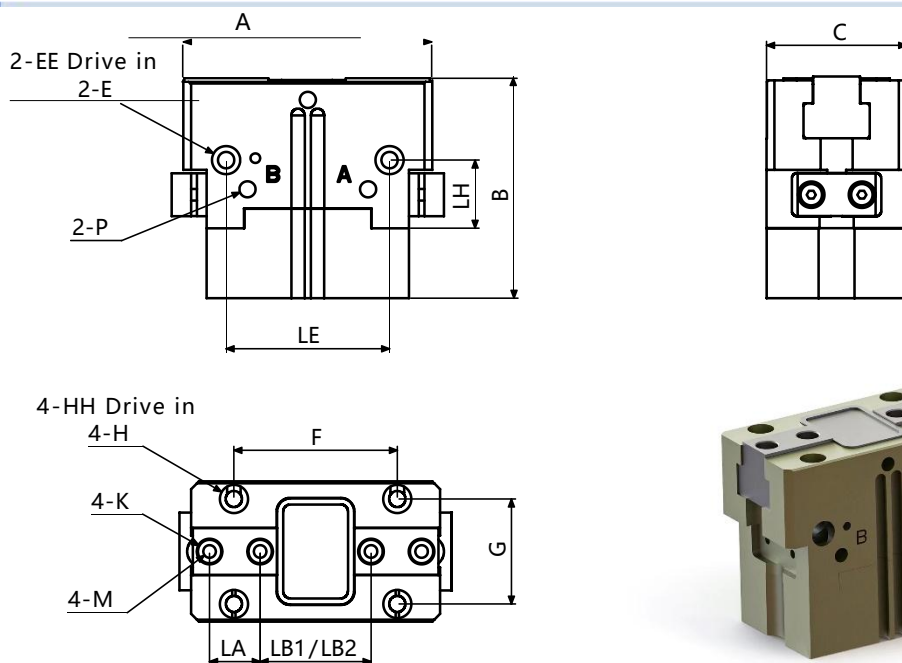


Pneumatic Gripper Handbook

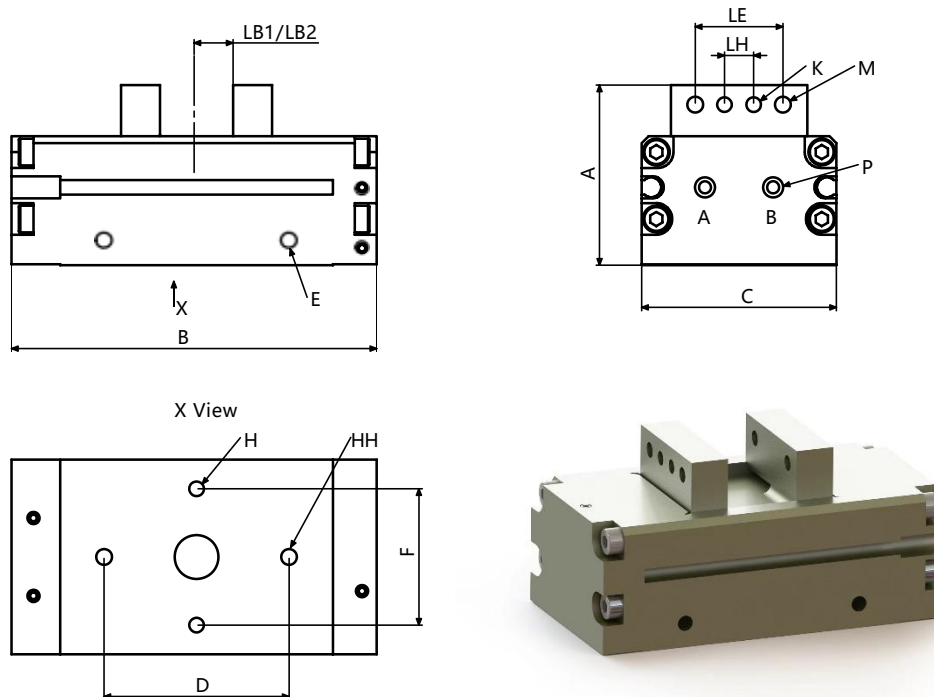
www.gree-ge.com

Outline Dimension

Specification

Series	Stroke per jaw [mm]	Closing force [N]	Opening force [N]	Weight[kg]	Recommended workpiece weight [kg]	Fluid consumption double stroke [cm ³]	Nominal operating pressure [bar]	Max. permissible finger length [mm]	Max. permissible weight per finger [kg]	Protection class IP	Min. ambient temperature	Max. ambient temperature	Repeat accuracy [mm]
TPD2-65-1-S	4	220	235	0.17	1.1	6	6	75	0.18	40	5	90	0.01
TPD2-76-1-S	6	350	375	0.27	1.75	15	6	90	0.4	40	5	90	0.01
TPD2-76-2-S	3	720	770	0.27	3.6	15	6	85	0.4	40	5	90	0.01
TPD2-96-1-S	8	550	610	0.51	2.75	29	6	110	0.6	40	5	90	0.01
TPD2-96-2-S	4	1100	1220	0.51	5.5	29	6	105	0.6	40	5	90	0.01
TPD2-120-1-S	10	870	930	0.9	4.35	55	6	145	1.1	40	5	90	0.01
TPD2-120-2-S	5	1750	1870	0.9	8.75	55	6	135	1.1	40	5	90	0.01
TPD2-1920-1-S	16	2500	2800	3	12.5	200	6	220	3.5	40	5	90	0.01

Series	A	B	C	D	E	EE Drive in	F	G	H	HH	K	M	P	LE	LH	LA	LB1	LB2
TPD2-65-1-S	65	31	30	/	Φ6	Φ3.3	35	22	Φ5.7	M4	Φ5	M3	M5	35	14.5	12	25.5	33.5
TPD2-76-1-S	76	39	36	/	Φ7.25	Φ4.2	42	27	Φ7.25	M5	Φ6	M4	M5	47	17.5	13	28.5	40.5
TPD2-76-2-S	72	39	36	/	Φ7.25	Φ4.2	42	27	Φ7.25	M5	Φ6	M4	M5	42	17.5	13	28.5	34.5
TPD2-96-1-S	96	49	42	/	Φ8.8	Φ5.1	52	32	Φ7.25	M5	Φ8	M5	M5	52	20	16	37	53
TPD2-96-2-S	96	49	42	/	Φ8.8	Φ5.1	52	32	Φ7.25	M5	Φ8	M5	M5	52	20	16	37	45
TPD2-120-1-S	120	55	50	/	Φ11	Φ6.6	66	20	Φ9	M6	Φ10	M6	G1/8	66	25	20	47	67
TPD2-120-2-S	120	55	50	/	Φ11	Φ6.6	66	20	Φ9	M6	Φ10	M6	G1/8	66	25	20	47	57
TPD2-1920-1-S	192	77	72	/	Φ14	Φ8.2	100	56	Φ10.5	M8	Φ14	M10	G1/8	100	28	32	77	109

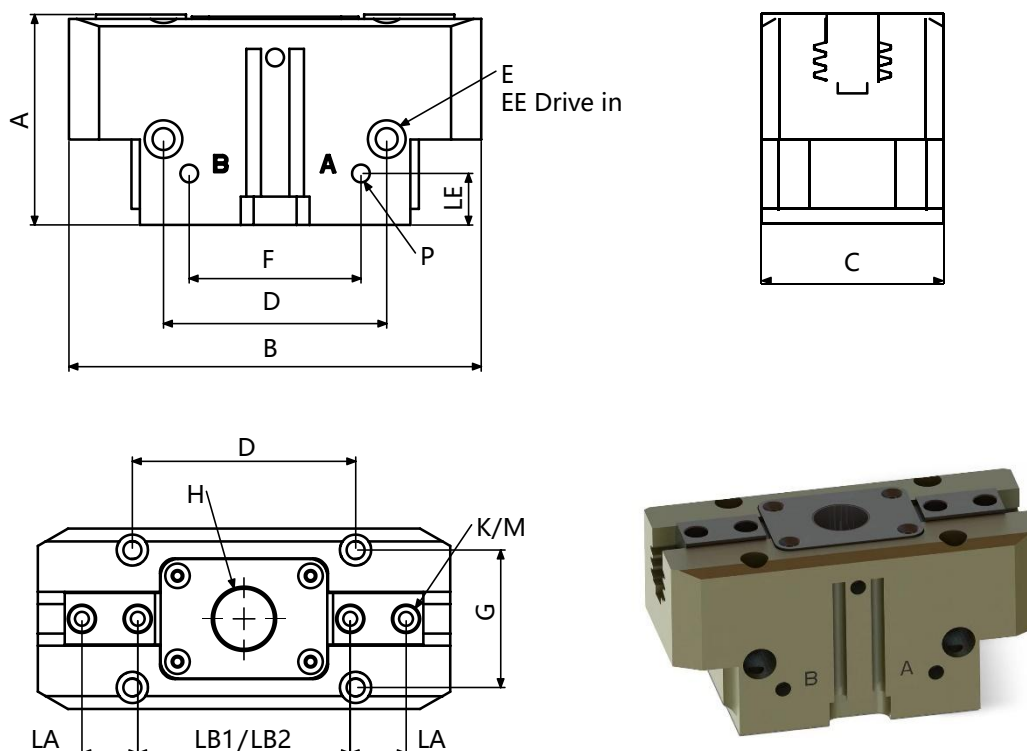
Outline Dimension



Specification

Series	Stroke per jaw [mm]	Closing force [N]	Opening force [N]	Weight[kg]	Recommended workpiece weight [kg]	Fluid consumption double stroke [cm ³]	Nominal operating pressure [bar]	Max. permissible finger length [mm]	Max. permissible weight per finger [kg]	Protection class IP	Min. ambient temperature [°C]	Max. ambient temperature [°C]	Repeat accuracy [mm]					
XPD2-36	2.5	16	16	0.05	0.08	0.5	6	30	0.034	30	5	60	0.02					
XPD2-50	4	50	50	0.14	0.25	1.3	6	35	0.055	30	5	60	0.02					
XPD2-75	7.5	110	110	0.21	0.55	4	6	35	0.072	30	5	60	0.02					
XPD2-92	10	170	170	0.34	0.85	8	6	40	0.13	30	5	60	0.02					
XPD2-104	12	240	240	0.54	1.2	14	6	45	0.19	30	5	60	0.02					
XPD2-123	15	370	370	0.94	1.85	25	6	60	0.32	30	5	60	0.02					
Series	A	B	C	D	E	EE Drive in	F	G	H	HH	K	M	P	LE	LH	LA	LB1	LB2
XPD2-36	24	36	29	22	M3	/	22	/	Φ3	M3	Φ2	M2.5	M3	13	5	/	/	/
XPD2-50	33.5	50	40	28	M4	/	28	/	Φ3	M4	Φ3	M4	M5	18	6	/	/	/
XPD2-75	37	75	40	38	M4	/	28	/	Φ3	M4	Φ3	M4	M5	18	6	/	/	/
XPD2-92	43	92	46	50	M4	/	35	/	Φ4	M5	Φ3	M5	M5	22	8	/	/	/
XPD2-104	50	104	54	60	M5	/	40	/	Φ4	M5	Φ4	M5	M5	30	10	/	/	/
XPD2-123	60	123	64	70	M5	/	50	/	Φ4	M5	Φ4	M6	M5	35	14	/	/	/

Outline Dimension

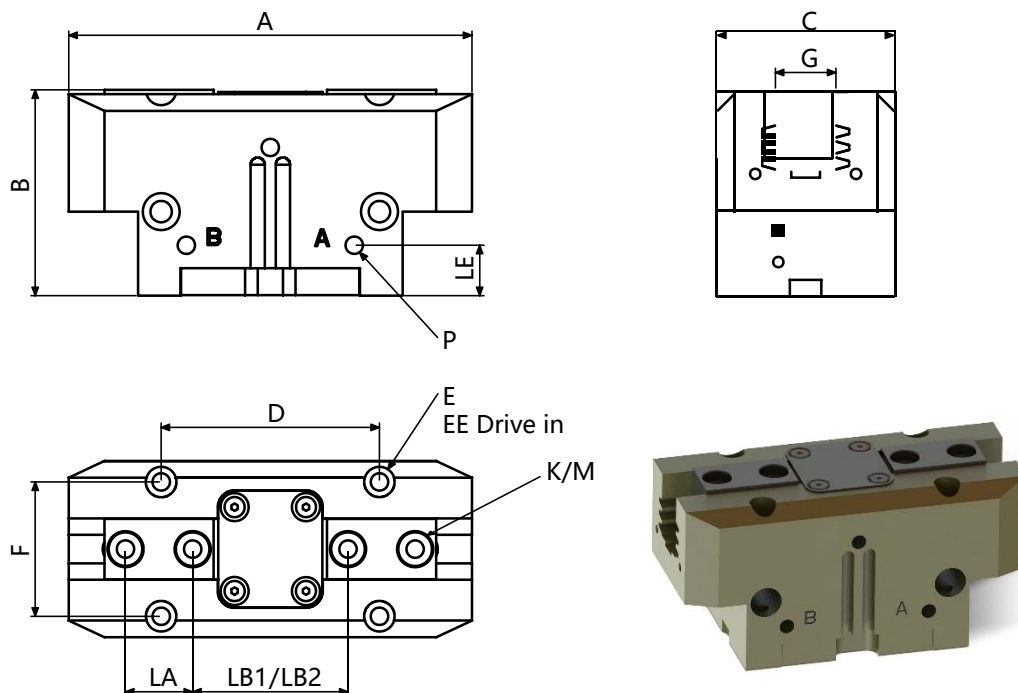


Specification

Series	Stroke per jaw [mm]	Closing force [N]	Opening force [N]	Weight[kg]	Recommended workpiece weight [kg]	Fluid consumption double stroke [cm ³]	Nominal operating pressure [bar]	Max. permissible finger length mm	Max. permissible weight per finger [kg]	Protection class IP	Min. ambient temperature[°C]	Max. ambient temperature[°C]	Repeat accuracy [mm]
KCPD2-64	4	90	110	0.28	0.7	5	6	64	0.18	40	5	90	0.01
KCPD2-80	6	230	260	0.47	1.25	11	6	80	0.35	40	5	90	0.01
KCPD2-100	8	370	410	0.78	2.1	22	6	100	0.6	40	5	90	0.01
KCPD2-125	10	590	640	1.32	3.3	32	6	125	1.1	40	5	90	0.01

Series	A	B	C	D	E	EE Drive in	F	G	H	HH	K	M	P	LE	LH	LA	LB1	LB2
KCPD2-64	39	79.5	36	42	Φ7.25	M5	31	27	Φ10	/	Φ5	M3	M5	10	/	12	41	49
KCPD2-80	49	96	42	52	Φ6	M4	40	32	Φ14	/	Φ6	M4	M5	12	/	13	49.5	61.5
KCPD2-100	55	120	50	66	Φ9	M6	49	38	Φ18	/	Φ8	M5	G1/8	15	/	16	61.5	77.5
KCPD2-125	63	151	60	82	Φ10.5	M8	63	45	Φ24	/	Φ10	M6	G1/8	15	/	20	78	98

Outline Dimension

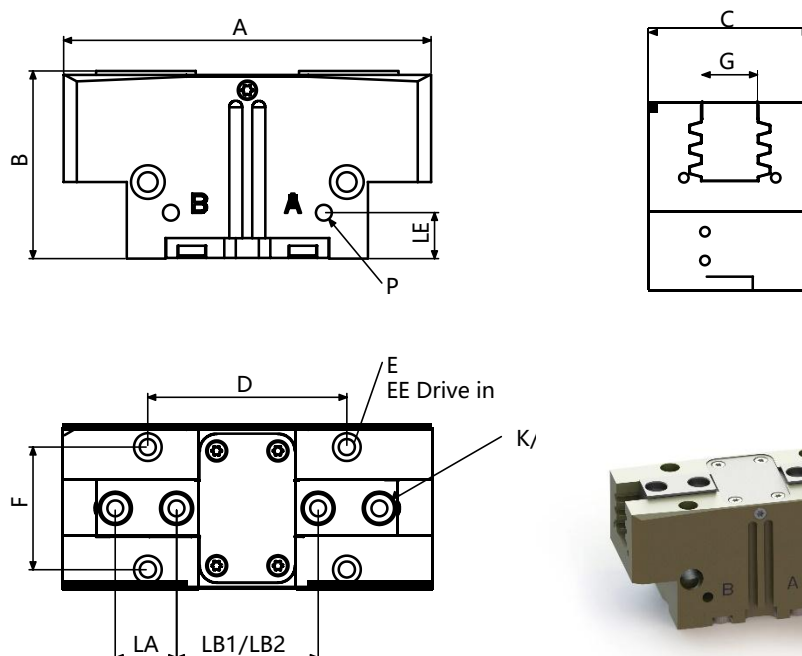


Specification

Series	Stroke per jaw [mm]	Closing force [N]	Opening force [N]	Weight [kg]	Recommended workpiece weight [kg]	Fluid consumption double stroke [cm ³]	Nominal operating pressure [bar]	Max. permissible finger length [mm]	Max. permissible weight per finger [kg]	Protection class IP	Min. ambient temperature [°C]	Max. ambient temperature [°C]	Repeat accuracy [mm]
TCPD2-40	2.5	123	132	0.08	0.62	2.5	6	58	0.1	40	5	90	0.01
TCPD2-50-1	4	135	145	0.17	0.7	5	6	72	0.18	40	5	90	0.01
TCPD2-64-1	6	250	270	0.28	1.25	/	6	90	0.35	40	5	90	0.01
TCPD2-80-1	8	415	465	0.5	2.1	22.5	6	110	0.6	40	5	90	0.01
TCPD2-100-1	10	660	725	0.81	3.3	45	6	145	1.1	40	5	90	0.01
TCPD2-125-1	13	1080	1170	1.35	5.4	87	6	180	2.1	40	5	90	0.01
TCPD2-160-1	16	1640	1770	2.6	8.2	164	6	220	3.5	40	5	90	0.01

Series	A	B	C	D	E	EE Drive in	F	G	H	HH	K	M	P	LE	LH	LA	LB1	LB2
TCPD2-40	50	24.7	25	32	Φ4.8	M3	18	6.8	/	/	Φ4	M2.5	M3	8	/	8	21.4	26.5
TCPD2-50-1	65	31	30	35	Φ5.7	M4	22	10.5	/	/	Φ5	M4	M5	10	/	12	25.5	33.5
TCPD2-64-1	76	39	36	42	Φ7.25	M5	27	12.5	/	/	Φ6	M4	M5	10	/	13	28.5	40.5
TCPD2-80-1	96	49	42	52	Φ7.25	M5	32	15	/	/	Φ8	M5	M5	12	/	16	37	53
TCPD2-100-1	120	55	50	66	Φ9	M6	38	18.5	/	/	Φ10	M6	G1/8	15	/	20	47	67
TCPD2-125-1	151	63	60	82	Φ10.5	M8	45	20.5	/	/	Φ10	M6	G1/8	15	/	24	61	87
TCPD2-160-1	192	77	72	100	Φ10.5	M8	56	26.6	/	/	Φ14	M10	G1/8	18	/	32	77	109

Outline Dimension

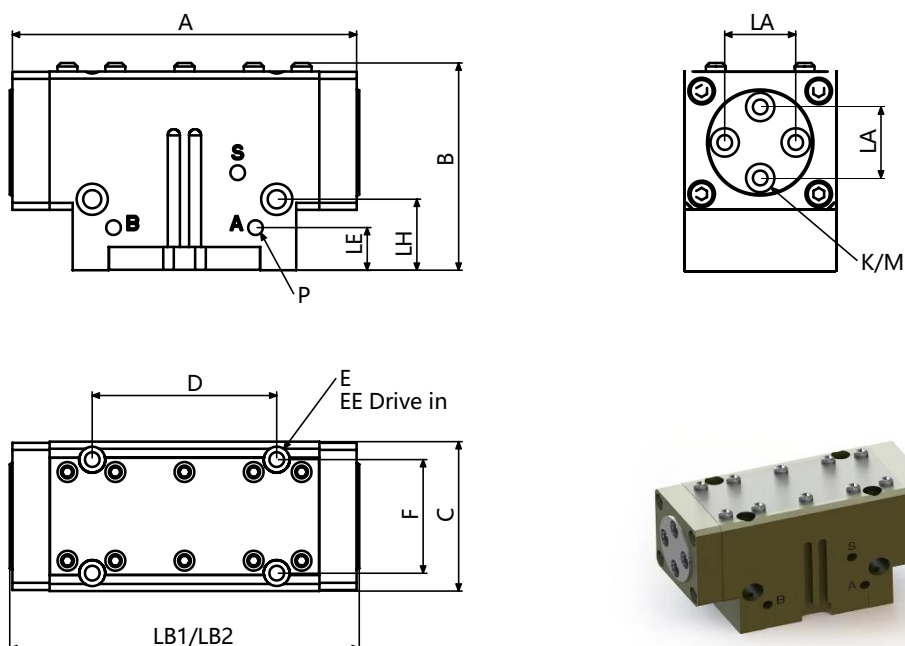


Specification

Series	Stroke per jaw [mm]	Closing force [N]	Opening force [N]	Weight[kg]	Recommended workpiece weight [kg]	Fluid consumption double stroke [cm ³]	Nominal operating pressure [bar]	Max. permissible finger length [mm]	Max. permissible weight per finger [kg]	Protection class IP	Min. ambient temperature [°C]	Max. ambient temperature [°C]	Repeat accuracy [mm]
RCPD2-40	2.5	180	200	0.08	0.9	4	6	65	0.12	40	5	90	0.01
RCPD2-50-1	4	220	235	0.17	1.1	6	6	80	0.2	40	5	90	0.01
RCPD2-64-1	6	350	375	0.27	1.75	15	6	100	0.4	40	5	90	0.01
RCPD2-80-1	8	550	610	0.51	2.75	29	6	125	0.7	40	5	90	0.01
RCPD2-100-1	10	870	930	0.9	4.35	55	6	160	1.3	40	5	90	0.01
RCPD2-125-1	13	1400	1520	1.4	7	110	6	200	2.4	40	5	90	0.01
RCPD2-160-1	16	2500	2800	2.8	12.5	200	6	245	3.8	40	5	90	0.01

Series	A	B	C	D	E	EE Drive in	F	G	H	HH	K	M	P	LE	LH	LA	LB1	LB2
RCPD2-40	50	24.7	25	32	Φ4.8	M3	27.2	6.8	/	/	Φ4	M2.5	M3	8	/	8	21.4	26.4
RCPD2-50-1	65	31	30	35	Φ5.7	M3	34	10.5	/	/	Φ5	M4	M5	10	/	12	25.5	33.5
RCPD2-64-1	76	39	36	42	Φ7.25	M4	43.3	12.5	/	/	Φ6	M4	M5	10	/	13	28.5	40.5
RCPD2-80-1	96	49	42	52	Φ7.25	M4	49.3	15	/	/	Φ8	M5	M5	12	/	16	37	53
RCPD2-100-1	120	55	50	66	Φ9	M5	59.3	18.5	/	/	Φ10	M6	G1/8	15	/	20	47	67
RCPD2-125-1	151	63	60	82	Φ10.5	M5	67	20.5	/	/	Φ10	M6	G1/8	15	/	24	61	87
RCPD2-160-1	192	77	72	100	Φ10.5	M4	81	26.6	/	/	Φ14	M10	G1/8	10	/	32	77	109

Outline Dimension

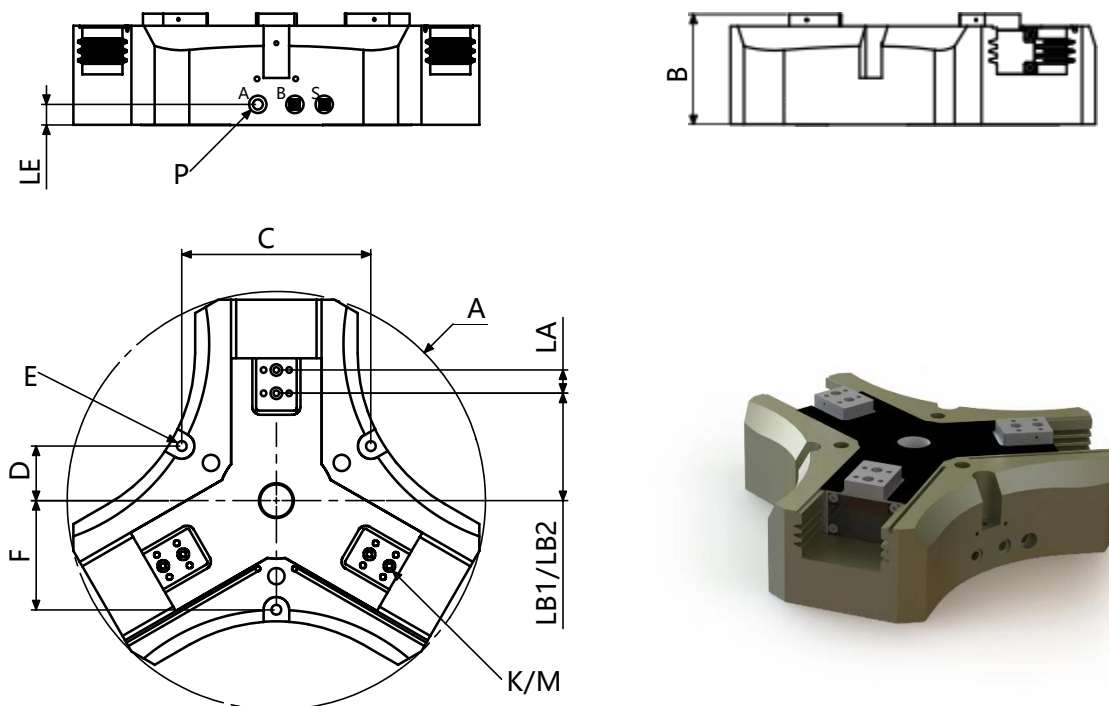


Specification

Series	Stroke per jaw [mm]	Closing force [N]	Opening force [N]	Weight[kg]	Recommended workpiece weight [kg]	Fluid consumption double stroke [cm ³]	Nominal operating pressure [bar]	Max. permissible finger length [mm]	Max. permissible weight per finger [kg]	Protection class IP	Min. ambient temperature [°C]	Max. ambient temperature [°C]	Repeat accuracy [mm]
MFPD2-40	2.5	110	120	0.12	0.55	2.5	6	40	0.1	67	5	90	0.01
MFPD2-50-1	4	125	130	0.25	0.6	5	6	50	0.15	67	5	90	0.01
MFPD2-64-1	6	225	240	0.39	1.1	10	6	60	0.3	67	5	90	0.01
MFPD2-80-1	8	375	415	0.68	1.8	22.5	6	80	0.5	67	5	90	0.01
MFPD2-100-1	10	625	685	1.1	3.1	45	6	100	0.95	67	5	90	0.01
MFPD2-125-1	13	1025	1110	1.9	5.1	87	6	125	1.75	67	5	90	0.01
MFPD2-160-1	16	1560	1680	3.65	7.8	164	6	160	3	67	5	90	0.01

Series	A	B	C	D	E	EE Drive in	F	G	H	HH	K	M	P	LE	LH	LA	LB1	LB2
MFPD2-40	54.5	32.2	30	32	Φ4.8	M3	18	/	/	/	Φ4	M2.5	M3	8	11	11	56	61
MFPD2-50-1	69.6	39.6	35.1	35	Φ5.8	M4	22	/	/	/	Φ5	M3	M3	10	14	14	71	79
MFPD2-64-1	80.1	47	41.1	42	Φ7.25	M5	27	/	/	/	Φ6	M4	M5	10	18	15.2	82	94
MFPD2-80-1	97	58.4	47.1	52	Φ7.25	M5	32	/	/	/	Φ8	M5	M5	12	20	20	98.5	114.5
MFPD2-100-1	120.6	66.1	55.1	66	Φ9	M6	38	/	/	/	Φ8	M5	G1/8	15	24	22	122.5	142.5
MFPD2-125-1	151.6	76	65.1	82	Φ10.5	M8	45	/	/	/	Φ10	M6	G1/8	15	26	28	154	180
MFPD2-160-1	194.6	92.5	77.1	100	Φ11	M8	56	/	/	/	Φ12	M8	G1/8	18	28	35	198	230

Outline Dimension

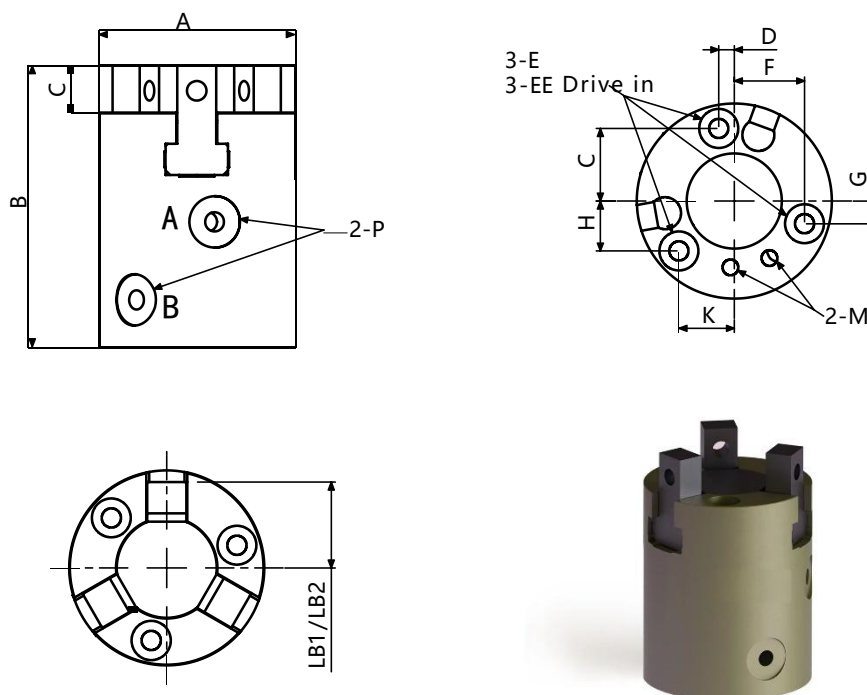


Specification

Series	Stroke per jaw [mm]	Closing force [N]	Opening force [N]	Weight[kg]	Recommended workpiece weight [kg]	Fluid consumption double stroke [cm ³]	Nominal operating pressure [bar]	Max. permissible finger length [mm]	Max. permissible weight per finger [kg]	Protection class IP	Min. ambient temperature [°C]	Max. ambient temperature [°C]	Repeat accuracy [mm]
CCPD3-167	20	375	400	1.5	1.9	65	6	150	0.9	40	5	90	0.02
CCPD3-229	30	900	950	3.9	4.5	175	6	200	1.9	40	5	90	0.02
CCPD3-360	50	2000	2100	12.5	10	580	6	300	5	40	5	90	0.05
CCPD3-517	75	4200	4400	33	22	1860	6	400	8.5	40	5	90	0.05

Series	A	B	C	D	E	EE Drive in	F	G	H	HH	K	M	P	LE	LH	LA	LB1	LB2
CCPD3-167	Φ167.6	55.1	77.9	22.5	Φ5	/	45	/	/	/	Φ6	M4	M5	12.8	/	13	41.5	61.5
CCPD3-229	Φ229.5	72.5	104.8	30.25	Φ11	/	60.5	/	/	/	Φ8	M5	M5	17.8	/	16	56.5	86.5
CCPD3-360	Φ360.2	95.9	162.8	173	Φ22	/	98.8	/	/	/	Φ10	M6	G1/8	24.3	/	20	92.5	142.5
CCPD3-517	Φ517.6	140.7	212.2	250.5	Φ22	/	122.5	/	/	/	Φ14	M10	G1/8	31.5	/	32	125.5	200.5

Outline Dimension

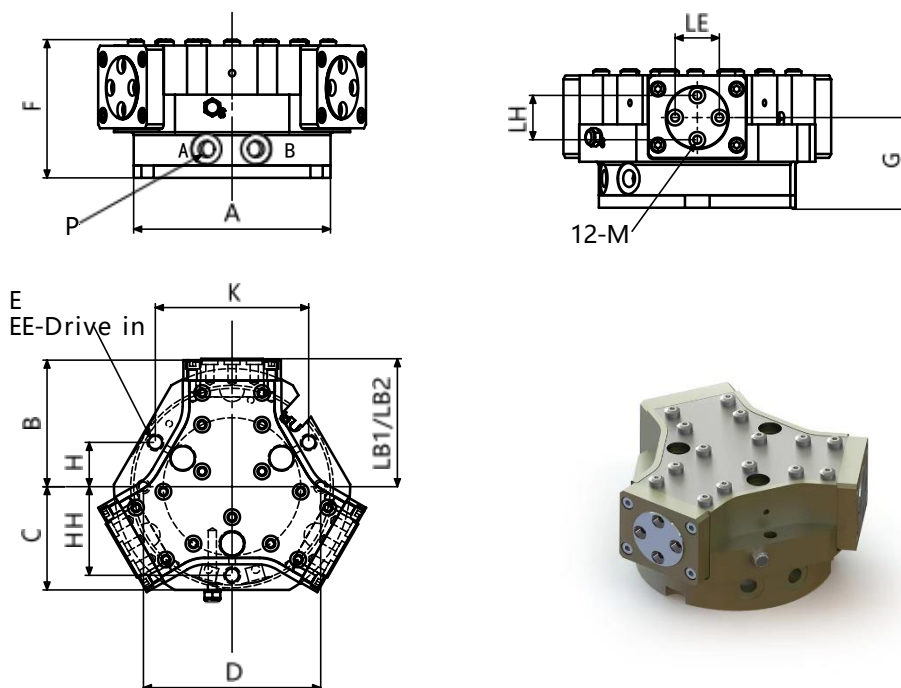


Specification

Series	Stroke per jaw [mm]	Closing force [N]	Opening force [N]	Weight[kg]	Recommended work piece weight [kg]	Fluid consumption double stroke [cm ³]	Nominal operating pressure [bar]	Max. permissible finger length [mm]	Max. permissible weight per finger [kg]	Protection class IP	Min. ambient temperature [°C]	Max. ambient temperature [°C]	Repeat accuracy [mm]
XPD3-16-S	1	20	24	0.01	0.05	0.15	6	16	0.02	40	5	90	0.01
XPD3-20-S	1.5	26	30	0.02	0.1	0.3	6	20	0.03	40	5	90	0.01
XPD3-25-S	2	35	40	0.04	0.2	0.6	6	25	0.03	40	5	90	0.01
XPD3-30-S	3	55	65	0.08	0.28	1.8	6	30	0.03	40	5	90	0.01
XPD3-38-S	4	120	140	0.14	0.6	3.5	6	38	0.05	40	5	90	0.01
XPD3-45-S	5	225	245	0.22	1.15	8.9	6	45	0.08	40	5	90	0.01

Series	A	B	C	D	E	EE Drive in	F	G	H	HH	K	M	P	LE	LH	LA	LB1	LB2
XPD3-16-S	Φ16	24.3	4.3	5.5	Φ3.2	M2	5.5	3.2	3.2	/	5.5	M2	/	/	/	/	8	9
XPD3-20-S	Φ20	31.95	4.95	1.6	Φ3.5	M2	7.3	2.4	5.2	/	5.7	/	M3	/	/	/	8.5	10
XPD3-25-S	Φ25	36	9.3	2	Φ5	M3	9	2.9	6.4	/	7	M2.5	M3	/	/	/	11	13
XPD3-25-S	Φ30	40	8	2.39	Φ5.7	M4	10.94	3.55	7.7	/	8.55	M3	M3	/	/	/	13	16
XPD3-38-S	Φ38	48	10	2.52	Φ7.5	M5	13.63	4.96	9.32	/	11.11	M3	M3	/	/	/	17	21
XPD3-45-S	Φ45	55	12	4.53	Φ7.4	M5	16.9	4.53	12.37	/	12.37	M3	M3	/	/	/	20	25

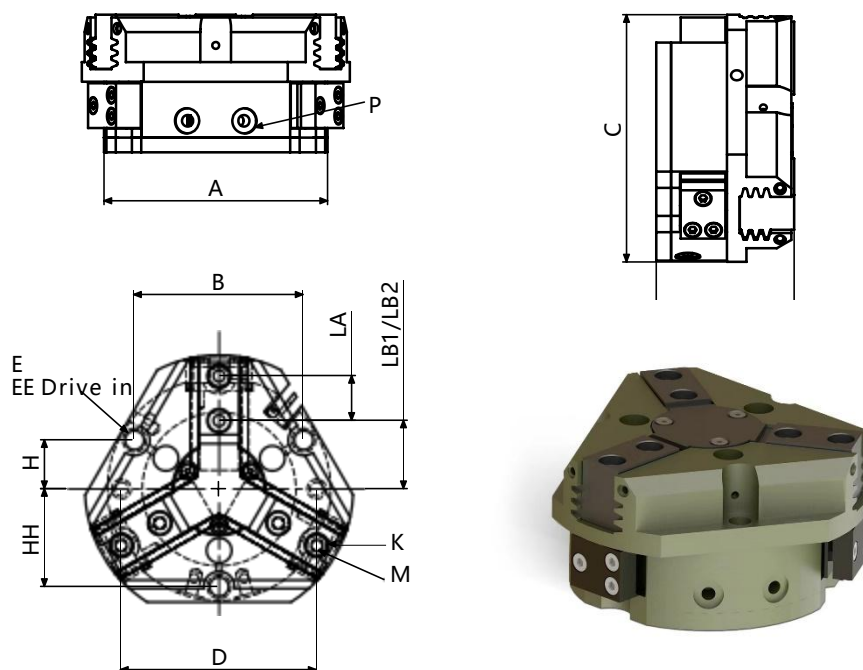
Outline Dimension



Specification

Series	Stroke per jaw [mm]	Closing force [N]	Opening force [N]	Weight[kg]	Recommended workpiece weight [kg]	Fluid consumption double stroke [cm ³]	Nominal operating pressure [bar]	Max. permissible finger length [mm]	Max. permissible weight per finger [kg]	Protection class IP	Min. ambient temperature [°C]	Max. ambient temperature [°C]	Repeat accuracy [mm]					
MPD3-64-1-S	6	520	620	0.62	2.6	25	6	64	0.3	67	5	90	0.01					
MPD3-64-2-S	3	870	1030	0.62	4.35	25	6	50	0.3	67	5	90	0.01					
MPD3-80-1-S	8	900	1000	1.3	4.5	60	6	80	0.5	67	5	90	0.01					
MPD3-100-1-S	10	1620	1920	1.9	8.1	120	6	100	0.95	67	5	90	0.01					
MPD3-125-1-S	13	2945	3000	3.5	14.7	230	6	125	1.75	67	5	90	0.01					
MPD3-160-1-S	16	5700	5880	7.9	28.5	520	6	125	3	67	5	90	0.02					
MPD3-200-1-S	25	6750	7160	15.6	33.5	1040	6	160	5.5	67	5	90	0.05					
Series	A	B	C	D	E	EE Drive in	F	G	H	HH	K	M	P	LE	LH	LA	LB1	LB2
MPD3-64-1-S	Φ64	43.3	34.8	56	Φ5.1	M6	51.7	34.1	14	28	48.5	M4	M4	15.2	15.2	/	44	50
MPD3-64-2-S	Φ64	43.3	34.8	56	Φ5.1	M6	51.7	34.1	14	28	48.5	M4	M4	15.2	15.2	/	44	47
MPD3-80-1-S	Φ80	52	42.9	70	Φ6.8	M8	58.7	36.3	17.5	35	60.6	/	M4	20	20	/	53	61
MPD3-100-1-S	Φ100	64.3	52.5	90	Φ6.8	M8	70.4	45.8	22.5	42	77.9	M5	G1/8	22.5	22.5	/	65	75
MPD3-125-1-S	Φ125	80.8	64	112	Φ8.5	M10	79.35	50.6	28	53	97	M6	G1/8	28	28	/	81.5	94.5
MPD3-160-1-S	Φ160	113.8	73	146	Φ8.5	M10	96.3	61.5	36.5	73	126.4	M8	G1/8	35	35	/	115.5	131.5
MPD3-200-1-S	Φ200	139	107	184	Φ10.2	M12	114.9	72	46	92	159.3	M12	G1/8	45	45	/	139.5	164.5

Outline Dimension

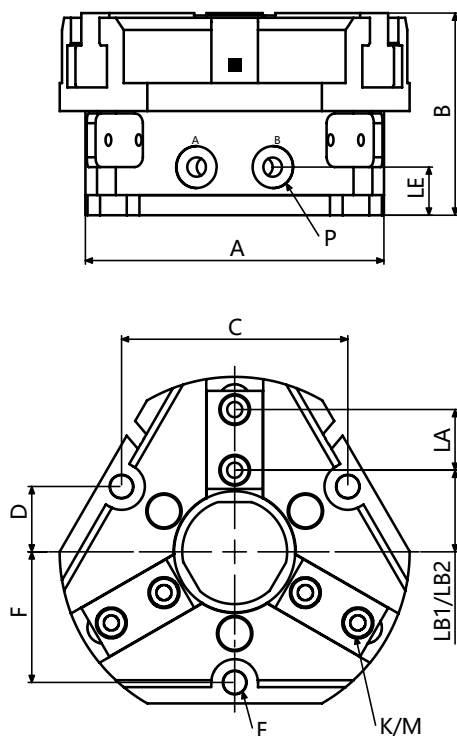


Specification

Series	Stroke per jaw [mm]	Closing force [N]	Opening force [N]	Weight[kg]	Recommended work piece weight [kg]	Fluid consumption double stroke [cm ³]	Nominal operating pressure [bar]	Max. permissible finger length [mm]	Max. permissible weight per finger [kg]	Protection class IP	Min. ambient temperature [°C]	Max. ambient temperature [°C]	Repeat accuracy [mm]
TPD3-52	2.5	255	270	0.13	1.3	5	6	58	0.1	40	5	90	0.01
TPD3-65-1	4	325	355	0.27	1.65	9	6	72	0.18	40	5	90	0.01
TPD3-76-1	6	580	640	0.43	2.9	25	6	90	0.35	40	5	90	0.01
TPD3-96-1	8	1000	1080	0.79	5	60	6	110	0.6	40	5	90	0.01
TPD3-120-1	10	1800	1920	1.41	9	120	6	145	1.1	40	5	90	0.01
TPD3-150-1	13	3100	3330	2.47	15.5	230	6	180	2.1	40	5	90	0.01
TPD3-190-1	16	6000	6390	5.6	30	520	6	220	3.5	40	5	90	0.02

Series	A	B	C	D	E	EE Drive in	F	G	H	HH	K	M	P	LE	LH	LA	LB1	LB2
TPD3-52	Φ40	29.9	Φ52	36	Φ3.3	/	27.2	/	8.6	16.2	Φ4	M2.5	M3	/	/	8	13	15.5
TPD3-65-1	Φ50	38	Φ65	45	M4	/	34	/	16.1	18.5	Φ5	M3	M3	/	/	12	15.5	19.5
TPD3-76-1	Φ64	48.5	Φ76	56	M6	/	43.3	/	14	28	Φ6	M4	M4	/	/	13	17.5	23.5
TPD3-96-1	Φ80	60.6	Φ96	70	M8	/	49.3	/	17.5	35	Φ8	M5	M4	/	/	16	22	30
TPD3-120-1	Φ100	77.9	Φ120	90	M8	/	59.3	/	22.5	42	Φ10	M6	M5	/	/	20	27.5	37.5
TPD3-150-1	Φ125	97	Φ150	112	M10	/	67	/	28	56	Φ10	M6	M5	/	/	24	35	48
TPD3-190-1	Φ160	126.4	Φ190	146	M10	/	81	/	36.5	67.5	Φ14	M10	M4	/	/	32	45	61

Outline Dimension

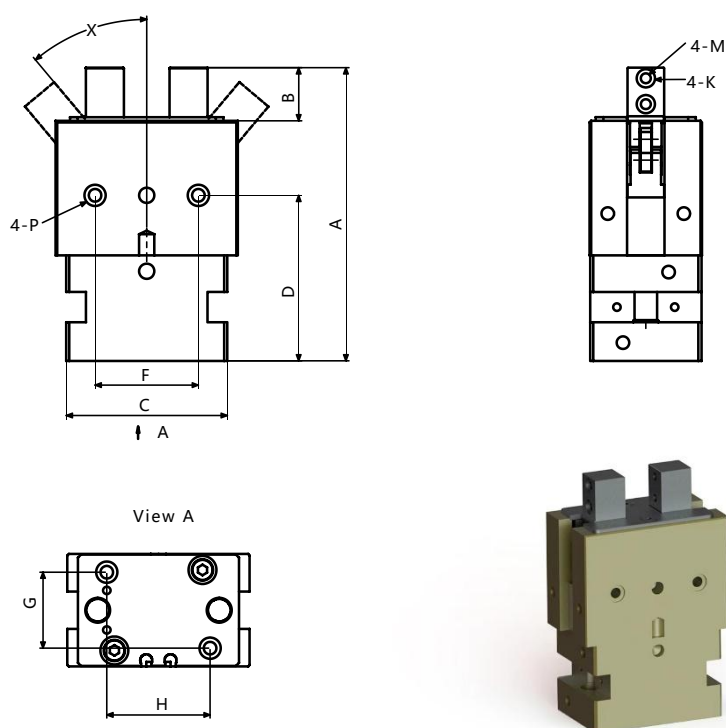


Specification

Series	Stroke per jaw [mm]	Closing force [N]	Opening force [N]	Weight [kg]	Recommended work piece weight [kg]	Fluid consumption double stroke [cm ³]	Nominal operating pressure [bar]	Max. permissible finger length [mm]	Max. permissible weight per finger [kg]	Protection class IP	Min. ambient temperature [°C]	Max. ambient temperature [°C]	Repeat accuracy [mm]
TTPD3-40	2.5	255	270	0.12	1.25	5	6	50	0.1	40	5	90	0.01
TTPD3-50-1	4	325	355	0.25	1.6	9	6	64	0.18	40	5	90	0.01
TTPD3-64-1	6	580	640	0.43	2.9	25	6	80	0.35	40	5	90	0.01
TTPD3-80-1	8	1000	1080	0.79	5	60	6	100	0.6	40	5	90	0.01
TTPD3-100-1	10	1800	1920	1.41	9	120	6	125	1.1	40	5	90	0.01
TTPD3-125-1	13	3100	3330	2.8	15.5	230	6	160	2.1	40	5	90	0.01

Series	A	B	C	D	E	EE Drive in	F	G	H	HH	K	M	P	LE	LH	LA	LB1	LB2
TTPD3-40	Φ40	27.2	29.9	8.6	Φ3.3	/	16.2	/	/	/	Φ4	M2.5	M3	7.5	/	8	24.3	26.8
TTPD3-50-1	Φ50	34	38	11	Φ3.3	/	22	/	/	/	Φ5	M3	M5	10	/	12	30.8	34.8
TTPD3-64-1	Φ64	43.3	48.5	14	Φ5.1	/	28	/	/	/	Φ6	M4	M5	10.3	/	13	34.5	40.5
TTPD3-80-1	Φ80	49.3	60.6	17.5	Φ6.8	/	35	/	/	/	Φ8	M5	M5	11.3	/	16	43	51
TTPD3-100-1	Φ100	59.3	77.9	22.5	Φ6.8	/	42	/	/	/	Φ10	M6	G1/8	16.3	/	20	53.5	63.5
TTPD3-125-1	Φ125	67	97	28	Φ8.5	/	53	/	/	/	Φ10	M6	G1/8	16	/	24	66.5	79.5

Outline Dimension

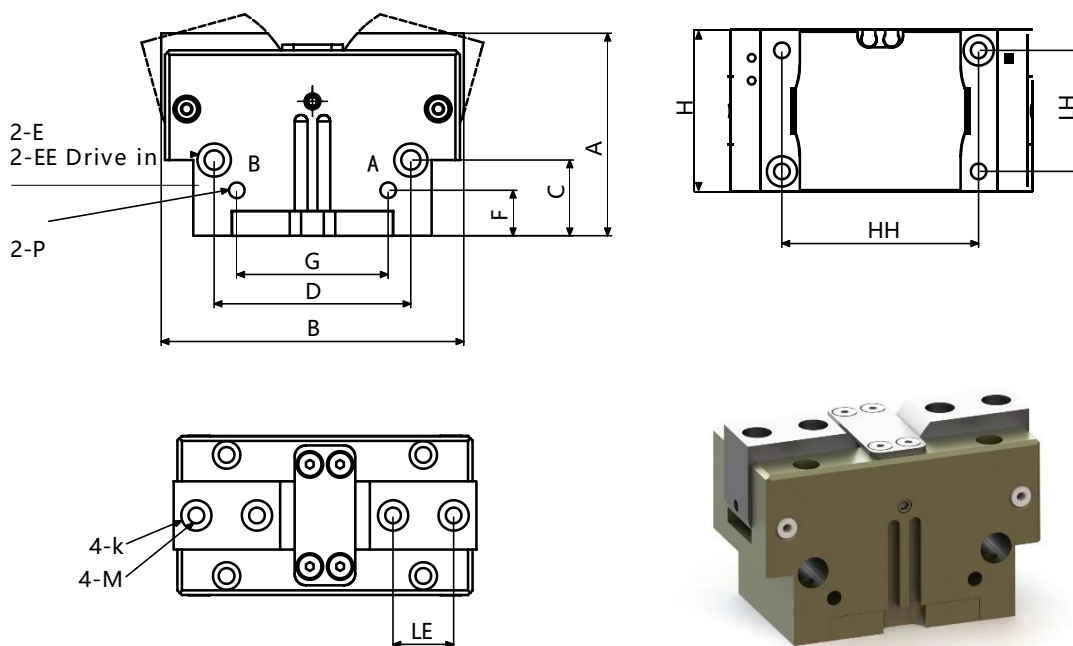


Specification

Series	Stroke per jaw [mm]	Closing force [N]	Opening force [N]	Weight[kg]	Recommended work piece weight [kg]	Fluid consumption double stroke [cm ³]	Nominal operating pressure [bar]	Max. permissible finger length [mm]	Max. permissible weight per finger [kg]	Protection class IP	Min. ambient temperature [°C]	Max. ambient temperature [°C]	Repeat accuracy [mm]
ZPD2-50-30	1	92	/	0.3	0.46	3	6	40	0.1	40	5	60	0.05
ZPD2-50-60	1	92	/	0.3	0.46	5	6	40	0.1	40	5	60	0.05
ZPD2-50-90	1	92	/	0.3	0.46	7	6	40	0.1	40	5	60	0.05
ZPD2-60-30	1.5	180	/	0.54	0.9	6.5	6	50	0.17	40	5	60	0.05
ZPD2-75-30	2	250	/	1.03	1.25	11	6	65	0.25	40	5	60	0.05
ZPD2-75-60	2	250	/	1.03	1.25	18	6	65	0.25	40	5	60	0.05

Series	A	B	C	D	E	EE Drive in	F	G	H	HH	K	M	P	LE	LH	LA	LB1	LB2
ZPD2-50-30	80	14.5	44	42	/	/	34	12	25	/	Φ5	M3	M4	7	/	/	/	/
ZPD2-50-60	80	14.5	44	42	/	/	34	12	25	/	Φ5	M3	M4	7	/	/	/	/
ZPD2-50-90	90	14.5	44	42	/	/	34	12	25	/	Φ5	M3	M4	7	/	/	/	/
ZPD2-60-30	96.5	17.5	53	54.5	/	/	34	25	34	/	Φ6	M4	M5	8.5	/	/	/	/
ZPD2-75-30	118	20.2	67	69	/	/	34	25	34	/	Φ7	M5	M5	10	/	/	/	/
ZPD2-75-60	118	20.2	67	69	/	/	34	25	34	/	Φ7	M5	M5	10	/	/	/	/

Outline Dimension

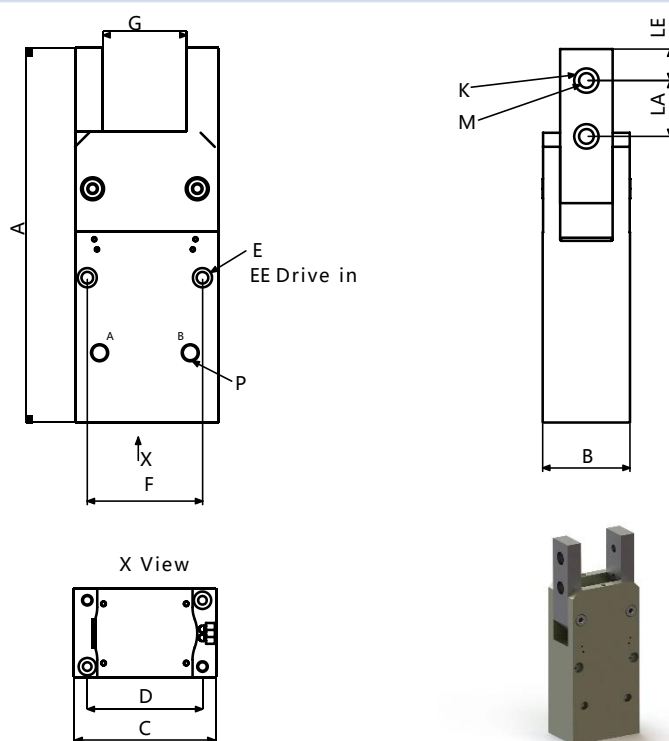


Specification

Series	Closing force (with finger lengths of 0 mm) [N]	Opening angle per jaw [°]	Closed angle per jaw [°]	Closing moment [Nm]	Weight [kg]	Recommended work piece weight [kg]	Fluid consumption on double stroke [cm ³]	Nominal operating pressure [bar]	Max. permissible finger length [mm]	IP protection class	Min. ambient temperature [°C]	Max. ambient temperature [°C]	Repeat accuracy [mm]
TZJ2-56	316	15	3	3.32	0.13	0.4	5.5	6	64	30	5	90	0.02
TZJ2-67	507	15	3	6.8	0.24	0.65	10	6	80	30	5	90	0.02
TZJ2-80	806	15	3	12.5	0.39	0.97	20	6	100	30	5	90	0.02
TZJ2-100	1095	15	3	23	0.76	1.4	40.5	6	125	30	5	90	0.02
TZJ2-125	2326	15	3	57	1.35	2.78	75.5	6	160	30	5	90	0.02
TZJ2-160	3125	15	3	100	2.12	3.86	135	6	200	30	5	90	0.02
TZJ2-200	6351	15	3	250	4.9	8.06	338	6	240	30	5	90	0.02

Series	A	B	C	D	E	EE Drive in	F	G	H	HH	K	M	P	LE	LH	LA	LB1	LB2
TZJ2-56	38.5	56	15.5	35	Φ5.8	Φ3.3	11	24	30	35	Φ5	M3	M5	12	22	/	/	/
TZJ2-67	44.7	67	17.5	42	Φ7.25	Φ4.2	10	31	36	42	Φ6	M4	M5	13	27	/	/	/
TZJ2-80	53.5	80	20	52	Φ9	Φ5.1	12	40	42	52	Φ8	M5	M5	16	32	/	/	/
TZJ2-100	65	100	25	66	Φ11	Φ6.6	15	49	50	66	Φ10	M6	G1/8	20	38	/	/	/
TZJ2-125	80	125	30	82	Φ10.5	Φ6.8	15	63	60	82	Φ10	M6	G1/8	24	45	/	/	/
TZJ2-160	87.5	152	28	100	Φ11	Φ6.8	18	74	72	100	Φ14	M10	G1/8	32	56	/	/	/
TZJ2-200	114.9	193	34	130	Φ14	Φ8.5	22	82	100	130	Φ16	M12	G1/8	40	70	/	/	/

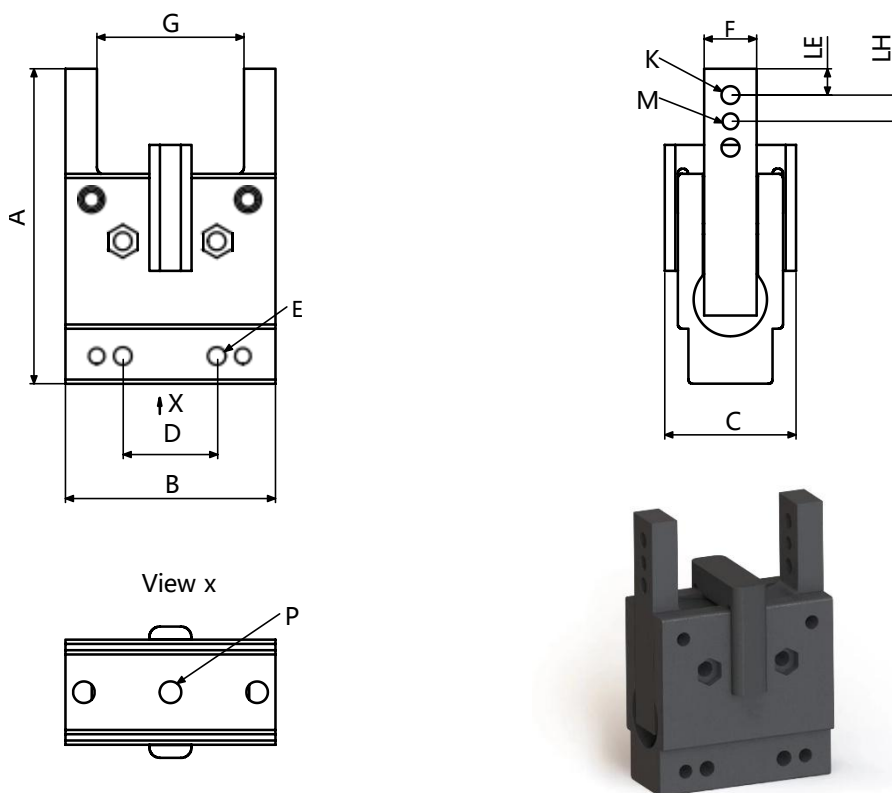
Outline Dimension



Specification

Series	Closing force (with finger lengths of 0 mm) [N]	Opening angle per jaw [°]	Closed angle per jaw [°]	Closing moment [Nm]	Weight [kg]	Recommended work piece weight [kg]	Fluid consumption double stroke [cm ³]	Nominal operating pressure [bar]	Max. permissible finger length [mm]	IP protection class	Min. ambient temperature [°C]	Max. ambient temperature [°C]	Repeat accuracy [mm]					
JZJ2-26-90	137	90	3	2	0.13	0.3	9	6	40	20	5	90	0.05					
JZJ2-34-90	216	90	3	4	0.24	0.42	17.5	6	60	20	5	90	0.05					
JZJ2-42-90	395	90	3	9.5	0.41	0.76	39	6	80	20	5	90	0.05					
JZJ2-52-90	709	90	3	20	0.75	1.3	72	6	100	20	5	90	0.05					
JZJ2-64-90	918	90	3	32.5	1.33	1.69	120	6	125	20	5	90	0.05					
JZJ2-80-90	1718	90	3	55	2.15	2.5	160	6	160	20	5	90	0.1					
JZJ2-100-90	2857	90	3	100	3.64	3.78	290	6	200	20	5	90	0.1					
Series	A	B	C	D	E	EE Drive in	F	G	H	HH	K	M	P	LE	LH	LA	LB1	LB2
JZJ2-26-90	84.5	22	26	20	Φ5	M3	20	14	/	/	Φ5	M3	M3	3.5	/	10	/	/
JZJ2-34-90	105.5	26	34	28	Φ5	M3	28	20	/	/	Φ6	M4	M3	5	/	13	/	/
JZJ2-42-90	133	30	42	35	Φ6.5	M4	32	26	/	/	Φ8	M5	M5	7	/	16	/	/
JZJ2-52-90	162	36	52	42	Φ8	M5	42	32	/	/	Φ10	M6	M5	10	/	20	/	/
JZJ2-64-90	203	42	64	52	Φ9	M5	52	38	/	/	Φ12	M8	M5	14	/	25	/	/
JZJ2-80-90	214	50	80	66	Φ11	M8	66	48	/	/	Φ14	M8	G1/8	18	/	32	/	/
JZJ2-100-90	246	60	100	82	Φ11	M8	82	60	/	/	Φ16	M12	G1/8	22	/	40	/	/

Outline Dimension



Specification

Series	Closing force (with finger lengths of 0 mm) [N]	Opening angle per jaw [°]	Closed angle per jaw [°]	Closing moment [Nm]	Weight [kg]	Recommended work piece weight [kg]	Fluid consumption on double stroke [cm³]	Nominal operating pressure [bar]	Max. permissible finger length [mm]	IP protection class	Min. ambient temperature [°C]	Max. ambient temperature [°C]	Repeat accuracy [mm]
XZJ2-32	225	8	2	0.9	0.04	0.2	0.5	6	32	20	5	90	0.1
XZJ2-40	474	8	2	2.37	0.05	0.4	1	6	40	20	5	90	0.1
XZJ2-50	825	8	2	4.95	0.06	0.8	1.8	6	50	20	5	90	0.1

Series	A	B	C	D	E	EE Drive in	F	G	H	HH	K	M	P	LE	LH	LA	LB1	LB2
XZJ2-32	48	32	20	10.4	Φ3.4	/	8	22.4	/	/	Φ3.4	Φ3.4	M3	5	6	/	/	/
XZJ2-40	60	40	25	18	Φ3.4	/	10	28	/	/	Φ3.4	Φ3.4	M5	5	5	/	/	/
XZJ2-50	75	50	31.2	22.5	Φ3.4	/	12.5	35	/	/	Φ4.4	Φ4	M5	5.2	6	/	/	/



☎ 150-8495-8866

📍 Building B, Jianyuanzhichuangyuan, Baoan District, Shenzhen City, Guangdong Province, China