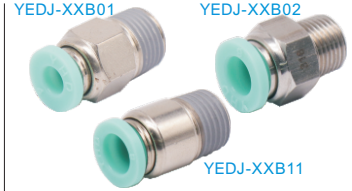


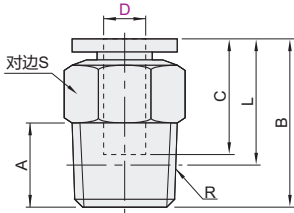
直接头
内六角孔直通接头
外螺纹

精密型 快插接头

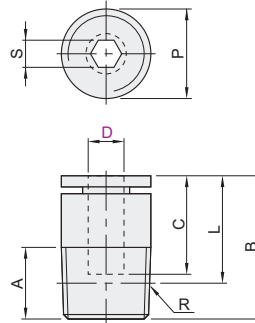
代码	类型	材质			表面处理
		主体	螺纹部	脱离环部	主体
YEDJ-XXB01	外螺纹	直接头	黄铜	黄铜	镀镍
YEDJ-XXB02			SUS304	SUS304	—
YEDJ-XXB11		内六角孔直通接头	黄铜	黄铜	镀镍



直接头
YEDJ-XXB01
YEDJ-XXB02



内六角孔直通接头
YEDJ-XXB11



直接头

型号	D	公称型号	R	A		B		L		C		S		有效断面积 (mm ²)	重量 (g)	
				YEDJ-XXB01	YEDJ-XXB02	YEDJ-XXB01	YEDJ-XXB02	YEDJ-XXB01	YEDJ-XXB02	YEDJ-XXB01	YEDJ-XXB02	YEDJ-XXB01	YEDJ-XXB02			
YEDJ-XXB01 YEDJ-XXB02	4	M5	M5	3.5	5	20	21.6	16.5	16.6	14.9	14.2	10	10	1.73	5.1	
			R1/8	7.5	7.5	19.3	18.6	15.3	14.6			14	14	3.9	5.8	
		R1/4	10	10	19.6	19.6	13.6	13.6	14			14	12	12	1.73	6.6
	6	M5	M5	3.5	5	21	22.8	17.5	17.8	17	15.4	12	12	6.93	12.6	
			R1/8	7.5	7.5	22.6	19.8	16.6	15.8			14	14	17	17	20.2
		R1/4	10	10	21.3	23.3	14.4	15.9	14			14	10.83	11.5		
	8	M5	M5	3.5	5	21	22.8	17.5	17.8	18.2	16.7	14	14	15.59	11.6	
			R1/8	7.5	7.5	26.6	25.3	22.6	21.3			15.5	17.2	18.2	18.2	
		R1/4	10	10	25.4	23.6	19.4	17.6	15.5			17.2	10.83	15.3		
	10	M5	M5	3.5	5	21	22.8	17.5	17.8	20.7	18.9	17	17	15.59	19.4	
			R1/8	7.5	7.5	29	28	25	24			21	21	27.71	33.1	
		R1/4	10	10	31	29.5	23.5	23.5	20.7			20.7	15.59	30.1		
12	M5	M5	3.5	5	21	22.8	17.5	17.8	23.3	21	21	20	27.71	27.9		
		R1/8	7.5	7.5	29.5	29.4	23.1	23			21	21	43.3	36.5		
	R1/4	10	10	34	32.4	29.9	26.4	23.3			23.3	27.71	30.1			
16	M5	M5	3.5	5	21	22.8	17.5	17.8	24.8	23.5	24	24	43.3	37.7		
		R1/8	7.5	7.5	36.4	37.1	30	30.7			24	24	62.35	42.4		
	R1/4	10	10	36.3	39.1	28.1	30.9	24.8			24.8	62.35	42.4			

内六角孔直通接头

型号	D	公称型号	R	A	B	L	C	S	P	有效断面积 (mm ²)	重量 (g)
YEDJ-XXB11	4	M5	M5	3.5	20	16.5	14.9	2	10	1.73	4.8
			R1/8	7.5	19.1	15.1	3	9.9	4	5.7	
		M5	M5	3.5	21	17.5	2	12	1.73	6.0	
	6	M5	M5	3.5	21	17.5	17	4	6.93	6.3	
			R1/8	7.5	20.6	16.6	5	13.9	10.83	10.8	
		R1/4	10	22.5	16.5	6	17	15.59	17.2		
8	M5	M5	3.5	21	17.5	17	4	6.93	6.3		
		R1/8	7.5	26.4	22.4	5	13.9	10.83	10.8		
	R1/4	10	25	19	6	17	15.59	17.2			
10	M5	M5	3.5	21	17.5	17	4	6.93	6.3		
		R1/8	7.5	26.4	22.4	5	13.9	10.83	10.8		
	R1/4	10	25	19	6	17	15.59	17.2			
12	M5	M5	3.5	21	17.5	17	4	6.93	6.3		
		R1/8	7.5	26.4	22.4	5	13.9	10.83	10.8		
	R1/4	10	25	19	6	17	15.59	17.2			
16	M5	M5	3.5	21	17.5	17	4	6.93	6.3		
		R1/8	7.5	26.4	22.4	5	13.9	10.83	10.8		
	R1/4	10	25	19	6	17	15.59	17.2			

直接头

型号	公称型号	R
YEDJ-XXB01	M5	M5
YEDJ-XXB02	④	R1/8

内六角孔直通接头

型号	公称型号	R
YEDJ-XXB11	④	M5
	①	R1/8

优惠价	
数量	1~29 30~
价格	100% 另行报价

请按图示订货

YEDJ-XXB01 - D4 - M5

YEDJ-XXB11 - D4 - M5

未税价(元)