

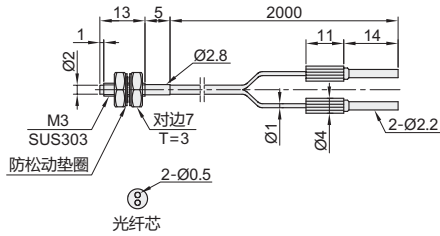
经济型光纤元件

漫反射型

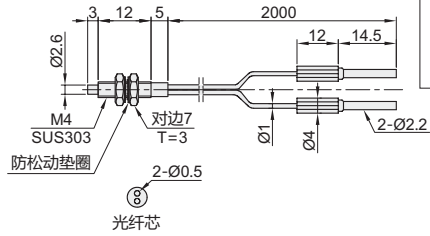
代码	类型	检测方式	外壳材质
YEDE-ZJH13	经济型	漫反射型	不锈钢※

※规格9外壳材质为铝。

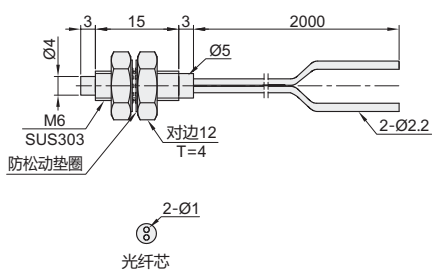
规格: 1



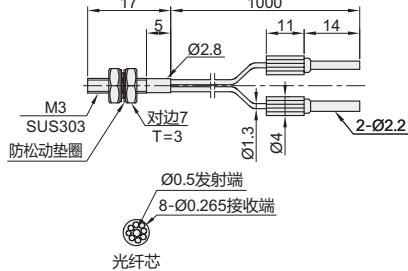
规格: 2



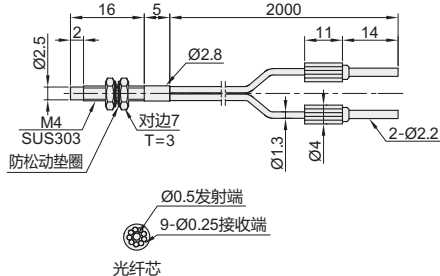
规格: 3



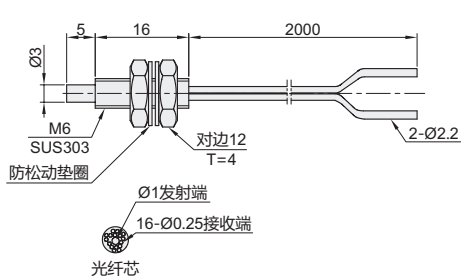
规格: 4



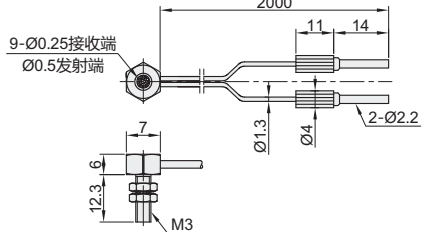
规格: 5



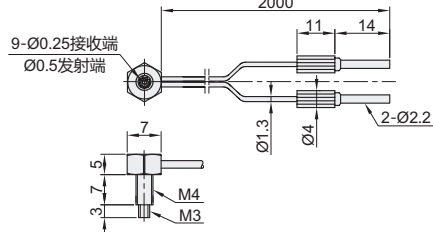
规格: 6



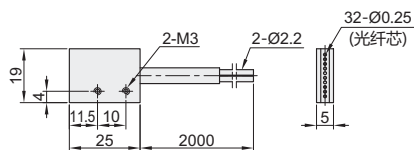
规格: 7



规格: 8



规格: 9



视角标准: 第一视角

型号	检测距离 (mm)	尺寸	纤芯结构	最小弯曲半径	适用光纤放大器
代码	规格				
	1	60	M3	15	
	2	45	M4	25	
	3	150	M6	2	
	4	85	M3	2	
YEDE-ZJH13	5	60	M4	15	YEDE-ZJH07
	6	150	M6	25	
	7	60	M3	5	
	8	50	M4		
	9	140	顶面出光	25	



请按图示订货

型号	检测距离 (mm)
代码	规格
YEDE-ZJH13	1
	2

YEDE-ZJH13-1