

**12mΩ, 1200V, Silicon Carbide N-Channel Power MOSFET**

**Description**

The LXP SEMI LX2C012N120AY silicon carbide Power MOSFET device has been developed using LXP’s advanced and innovative 2nd generation SiC MOSFET technology. The device features a very low  $R_{DS(on)}$  over the entire temperature range combined with low capacitances and good switching performance, which improve application performance in frequency, energy efficiency, system size and weight reduction.

**Key Features**

- Typ.  $R_{DS(on)} = 12m\Omega @ V_{GS} = 18V$
- High speed switching performances
- Low Switching Losses
- 100% Avalanche Tested
- EMI Improved Design
- Very fast and robust intrinsic body diode



TO-247-4

**Applications**

- DC/DC converter for EV/HEV
- On board charger (OBC)
- Solar Inverters
- Energy Storage Systems
- SMPS (Switch Mode Power Supplies)



**Key performance**

Parameter	Value	Unit
$V_{DS}(T_J=25^\circ C)$	1200	V
$R_{DS(on)}$ , typ( $T_J=25^\circ C$ , $I_b=70A$ , $V_{GS}=18V$ )	12	mΩ
$I_D(T_J=25^\circ C)$	168	A
$T_{j, max}$	175	°C

**Package Feature**

Order code	Marking	Package	Packing
LX2C012N120AY	LX2C012N120A	TO-247-4PIN	Tube



**1. Maximum Ratings** ( $T_J=25^\circ\text{C}$  unless otherwise specified)

Parameter		Symbol	Rating	Unit
Drain-Source Voltage		$V_{DSS}$	1200	V
Gate-Source Voltage		$V_{GSS}$	-10/+22	V
Gate-Source Voltage Recommended Operation Values		$V_{GSS}$	-5/+18	V
Gate-Source Transient Voltage ( $t_p < 1\mu\text{s}$ , $t \leq 10$ hours)		$V_{GSS}$	-11/+25	V
Continuous Drain Current	$T_C = 25^\circ\text{C}$	$I_D$	168	A
	$T_C = 100^\circ\text{C}$		119	
Pulsed Drain Current (Note 2)		$I_{DM}$	376	A
Avalanche Energy, Single Pulse (Note 3)		$E_{AS}$	800	mJ
Avalanche Current, Repetitive (Note 2)		$I_{AR}$	40	A
Continuous Diode Forward Current		$I_S$	168	A
Power Dissipation		$P_{tot}$	1000	W
Operating Temperature/ Storage Temperature		$T_J$	-55~175	$^\circ\text{C}$

Note:

1. Absolute maximum ratings are those values beyond which the device could be permanently damaged. Absolute maximum ratings are stress ratings only and functional device operation is not implied.
2. Repetitive Rating: Pulse width limited by maximum junction temperature
3.  $L = 1\text{mH}$ ,  $I_{AS} = 40\text{A}$ ,  $V_{DD} = 120\text{V}$ ,  $V_{GS} = 18\text{V}$ ,  $R_g = 25\Omega$ , Starting  $T_J = 25^\circ\text{C}$

**2. Thermal characteristics**

Parameter	Symbol	Value	Unit
Thermal resistance, junction-to-case	$R_{thJC}$	0.15	$^\circ\text{C/W}$
Thermal resistance, junction-to-ambient	$R_{thJA}$	41	$^\circ\text{C/W}$



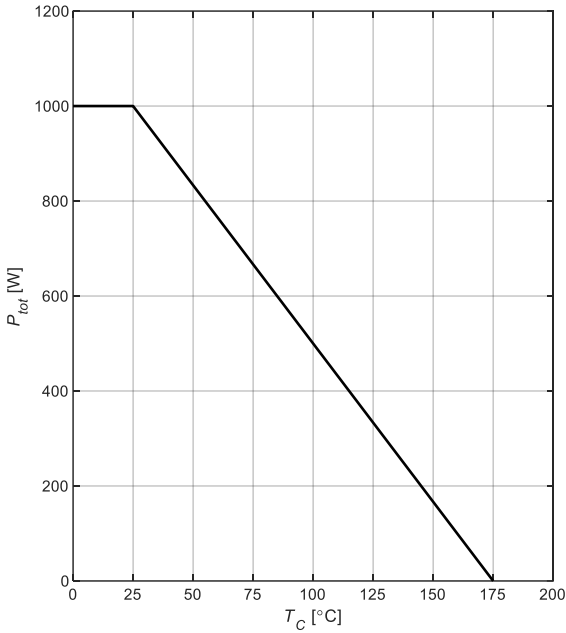
**3.Electrical Characteristics** ( $T_j=25^{\circ}\text{C}$  unless otherwise specified)

Parameter	Symbol	Test Conditions	Min	Typ	Max	Unit	
<b>Statistic Characteristics</b>							
Drain-Source Breakdown Voltage	$BV_{DSS}$	$V_{GS} = 0\text{ V}, I_D = 100\ \mu\text{A}$	1200	1500		V	
Zero Gate Voltage Drain Current	$I_{DSS}$	$V_{DS} = 1200\text{ V}, V_{GS} = 0\text{ V}$		1	10	$\mu\text{A}$	
Gate-Source Leakage Current	$I_{GSSF}$	$V_{GS} = 22\text{ V}, V_{DS} = 0\text{ V}$			100	nA	
	$I_{GSSR}$	$V_{GS} = -10\text{ V}, V_{DS} = 0\text{ V}$			-100	nA	
Gate Threshold Voltage	$V_{GS(th)}$	$V_{DS} = V_{GS}, I_D = 30\text{ mA}$	2.1	2.8	3.5	V	
Static Drain-Source On-Resistance	$R_{DS(on)}$	$V_{GS} = 18\text{ V}, I_D = 70\text{ A}$		12	16	m $\Omega$	
		$V_{GS} = 18\text{ V}, I_D = 70\text{ A}, T_j = 150^{\circ}\text{C}$		18			
		$V_{GS} = 18\text{ V}, I_D = 70\text{ A}, T_j = 175^{\circ}\text{C}$		20			
		$V_{GS} = 15\text{ V}, I_D = 70\text{ A}$		15	20		
		$V_{GS} = 15\text{ V}, I_D = 70\text{ A}, T_j = 150^{\circ}\text{C}$		20			
		$V_{GS} = 15\text{ V}, I_D = 70\text{ A}, T_j = 175^{\circ}\text{C}$		21			
Gate Resistance	$R_G$	$f = 1\text{ MHz}, \text{ open drain}$		2		$\Omega$	
<b>Dynamic Characteristics</b>							
Input Capacitance	$C_{ISS}$	$V_{GS} = 0\text{ V}$		4770		pF	
Output Capacitance	$C_{OSS}$	$V_{DS} = 800\text{ V}$		280			
Reverse Transfer Capacitance	$C_{RSS}$	$f = 1\text{ MHz}$		17			
Gate to Source Charge	$Q_{gs}$	$V_{DS} = 800\text{ V}$		80		nC	
Gate to Drain Charge	$Q_{gd}$	$V_{GS} = -5\text{ to }18\text{ V}$		67			
Gate Charge Total	$Q_g$	$I_D = 70\text{ A}$		253			
<b>Switching Characteristics</b>							
Turn-on delay time	$T_{d(on)}$	$V_{DD} = 800\text{ V}, I_D = 70\text{ A},$ $R_G = 2.4\ \Omega, V_{GS} = -5/+18\text{ V}$		18		ns	
Rise time	$T_r$			28			
Turn-off delay time	$T_{d(off)}$			55			
Fall time	$T_f$			12			
Turn-on switching energy	$E_{on}$				600		$\mu\text{J}$
Turn-off switching energy	$E_{off}$				230		
<b>Reverse Diode Characteristics</b>							
Diode Forward Voltage	$V_{SD}$	$V_{GS} = -5\text{ V}, I_{SD} = 70\text{ A}$		4.6		V	
		$V_{GS} = -5\text{ V}, I_{SD} = 70\text{ A}, T_j = 175^{\circ}\text{C}$		4.1			
Reverse Recovery Time	$t_{rr}$	$V_R = 800\text{ V}, I_F = 70\text{ A},$ $di/dt = 1000\text{ A}/\mu\text{s}$		30		ns	
Reverse Recovery Charge	$Q_{rr}$			260		nC	
Peak Reverse Recovery Current	$I_{rrm}$			19		A	



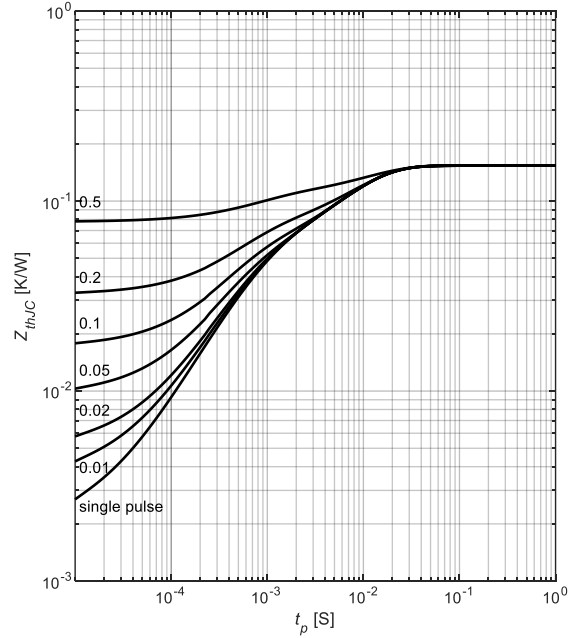
4. Electrical characteristic curves

Figure 1: Power dissipation



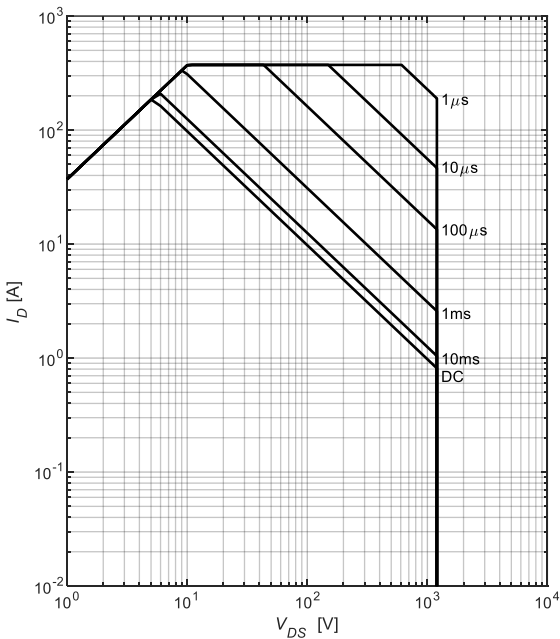
$P_{tot}=f(T_C)$

Figure 2: Transient thermal impedance



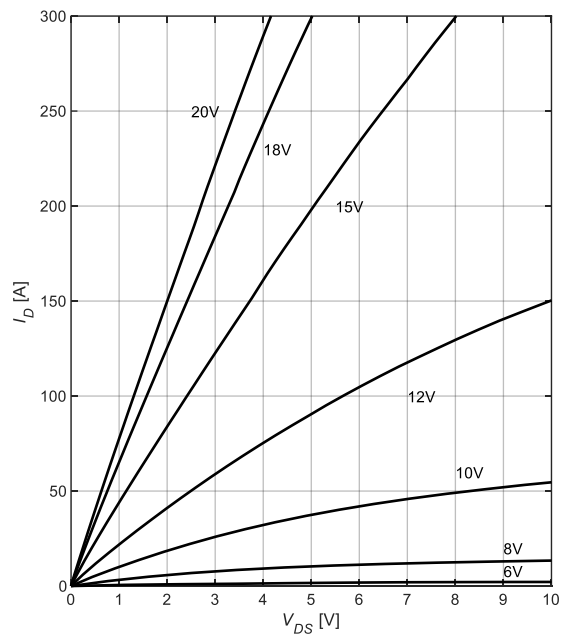
$Z_{(th)JC}=f(t_p)$ ; parameter:  $D=t_p/T$

Figure 3: Safe operating area



$I_D=f(V_{DS})$ ;  $T_C=25^\circ\text{C}$ ;  $V_{GS}>7.5\text{V}$ ; parameter  $t_p$

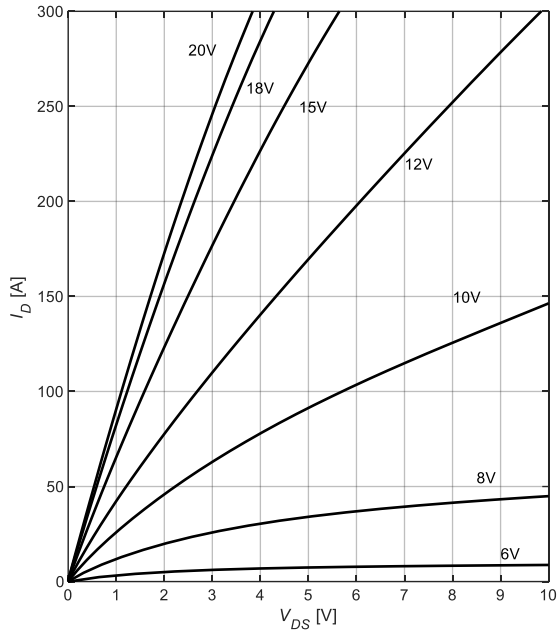
Figure 4: Typ. output characteristics



$I_D=f(V_{DS})$ ;  $T_J=-55^\circ\text{C}$ ; parameter:  $V_{GS}$

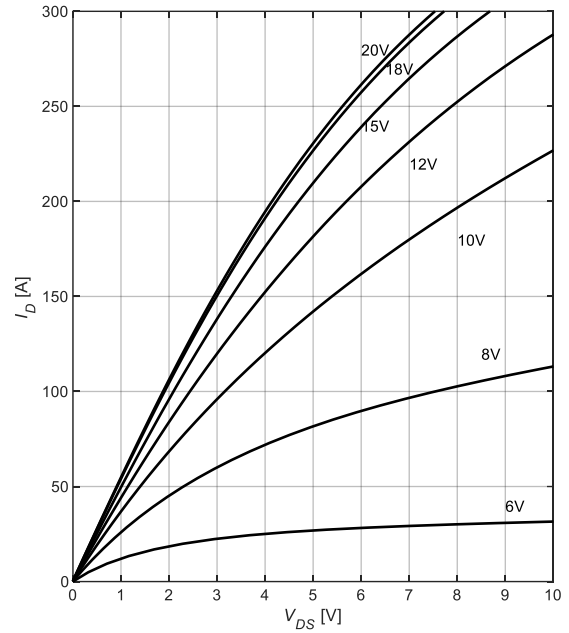


Figure 5: Typ. output characteristics



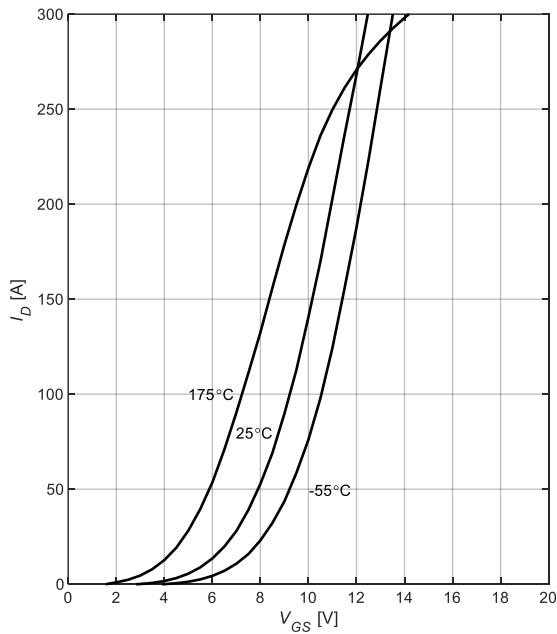
$I_D=f(V_{DS}); T_j=25^{\circ}\text{C}; \text{parameter: } V_{GS}$

Figure 6: Typ. output characteristics



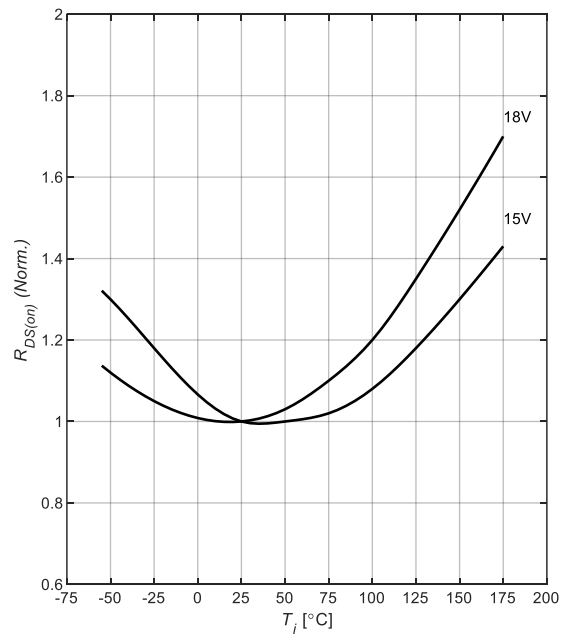
$I_D=f(V_{DS}); T_j=175^{\circ}\text{C}; \text{parameter: } V_{GS}$

Figure 7: Typ. transfer characteristics



$I_D=f(V_{GS}); V_{DS}=10\text{V}; \text{parameter: } T_j$

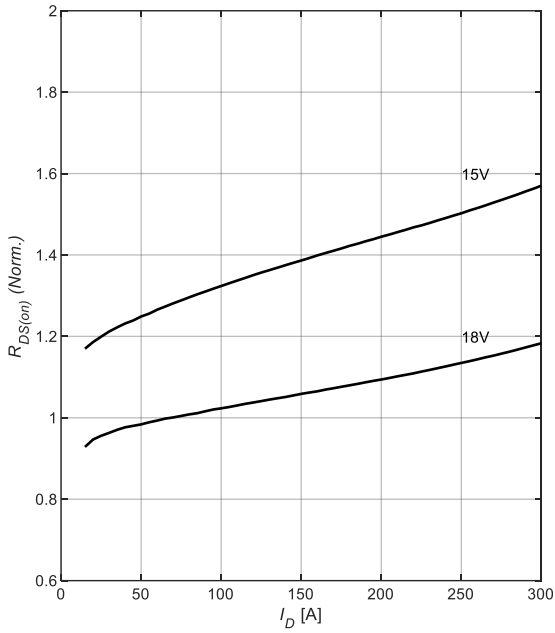
Figure 8: Norm. Drain-Source On-State Resistance



$R_{DS(on)}=f(T_j); I_D=70\text{A}; \text{parameter: } V_{GS}$

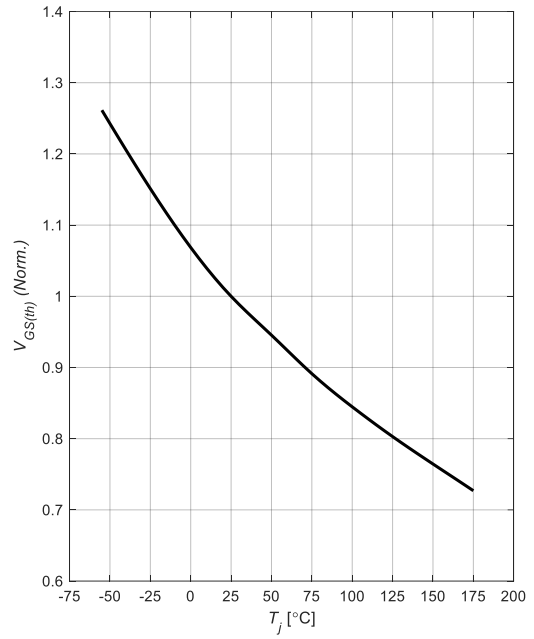


Figure 9: Norm. Drain-Source On-State Resistance



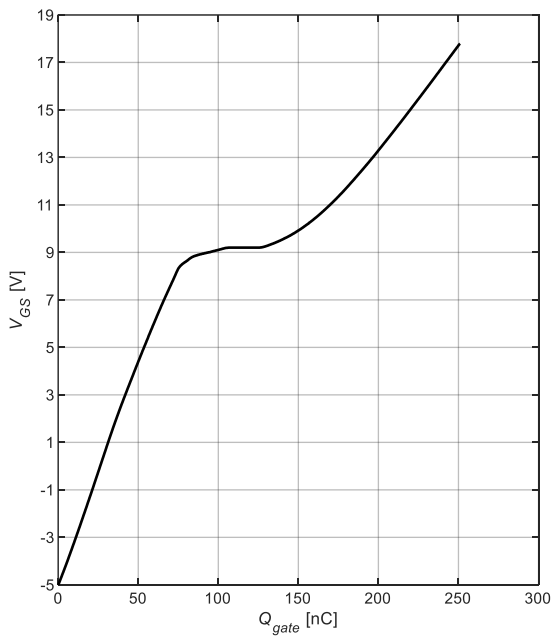
$R_{DS(on)}=f(I_D)$ ;  $T_j=25^\circ\text{C}$ ; parameter:  $V_{GS}$

Figure 10: Norm. gate threshold voltage



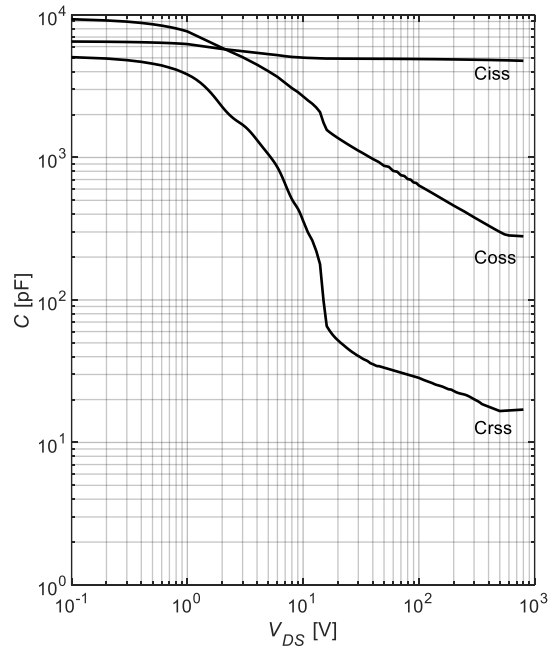
$V_{GS(th)}=f(T_j)$ ;  $V_{DS}=V_{GS}$ ,  $I_D=30\text{mA}$

Figure 11: Typ. gate charge



$V_{GS}=f(Q_{gate})$ ,  $V_{DS}=800\text{V}$ ,  $I_D=70\text{A}$  pulsed

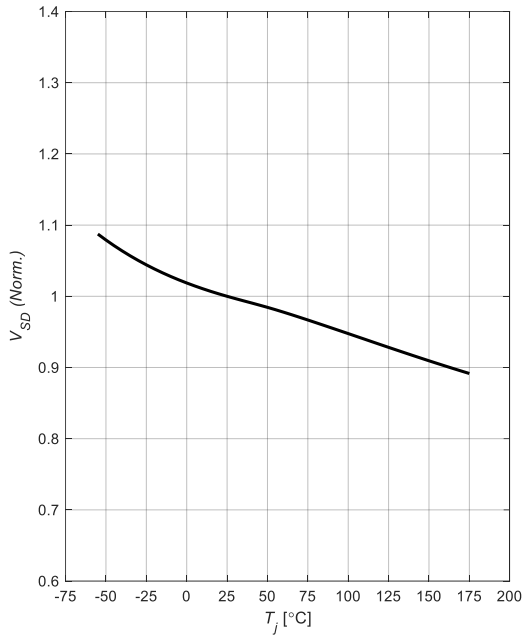
Figure 12: Typ. capacitances



$C=f(V_{DS})$ ;  $V_{GS}=0$ ;  $f=1\text{MHz}$

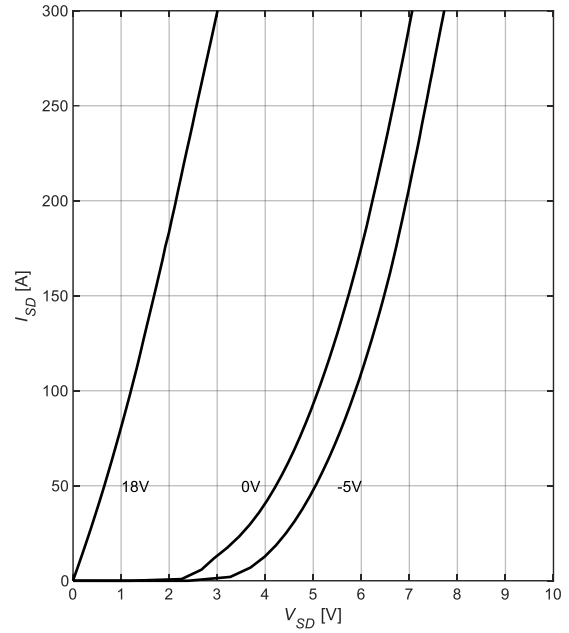


Figure 13: Norm. reverse diode forward voltage



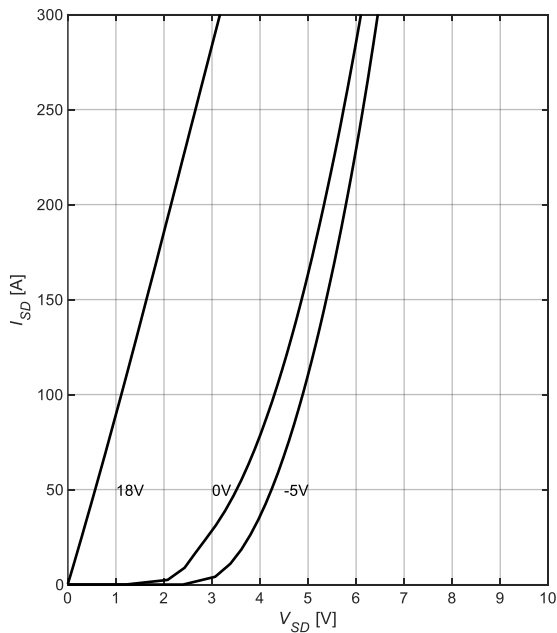
$V_{SD}=f(T_j)$ ;  $I_{SD}=70A$ ;  $V_{GS}=-5V$

Figure 14: Typ. reverse conduction characteristics



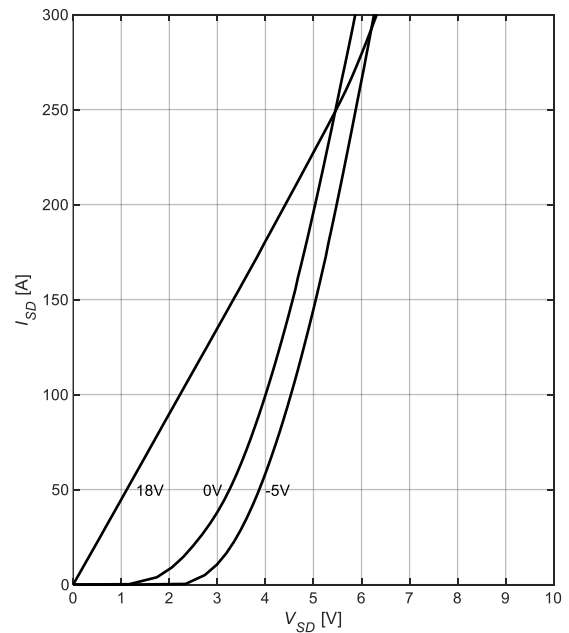
$I_{SD}=f(V_{SD})$ ;  $T_j=-55^\circ\text{C}$ ; parameter:  $V_{GS}$

Figure 15: Typ. reverse conduction characteristics



$I_{SD}=f(V_{SD})$ ;  $T_j=25^\circ\text{C}$ ; parameter:  $V_{GS}$

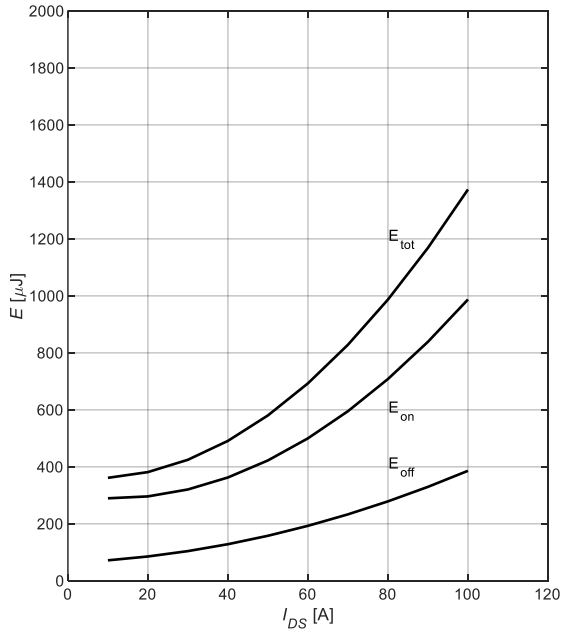
Figure 16: Typ. reverse conduction characteristics



$I_{SD}=f(V_{SD})$ ;  $T_j=175^\circ\text{C}$ ; parameter:  $V_{GS}$

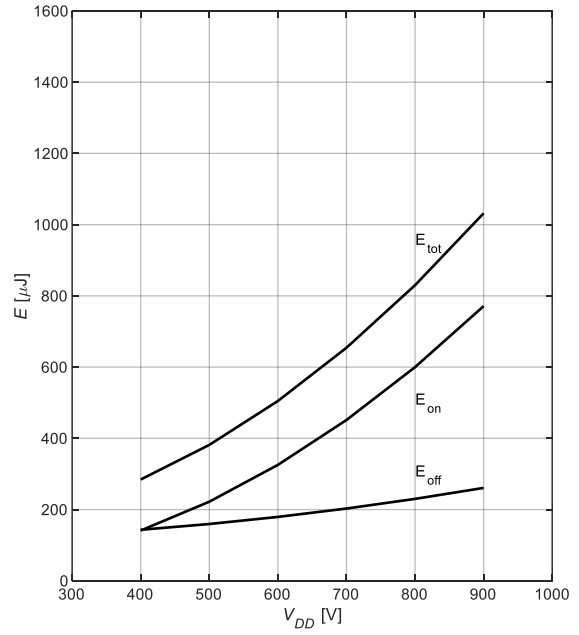


Figure 17: Typ. switching energy losses



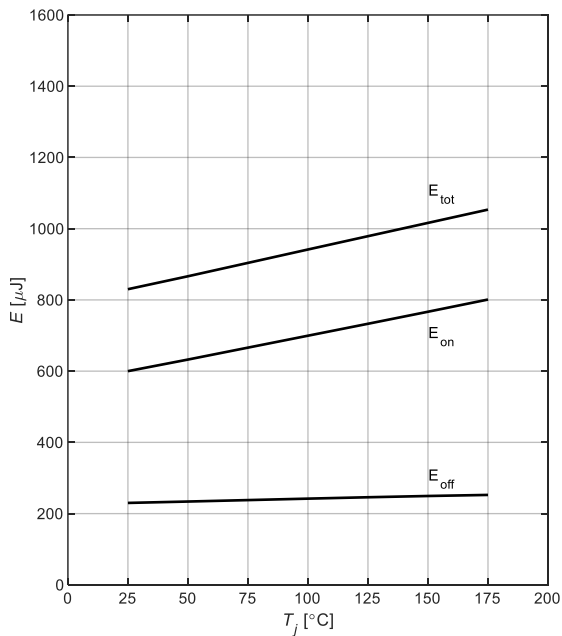
$E=f(I_{DS}); V_{DD}=800V; V_{GS}=-5/+18V; R_G=2.4\Omega; T_j=25^\circ C$

Figure 18: Typ. switching energy losses



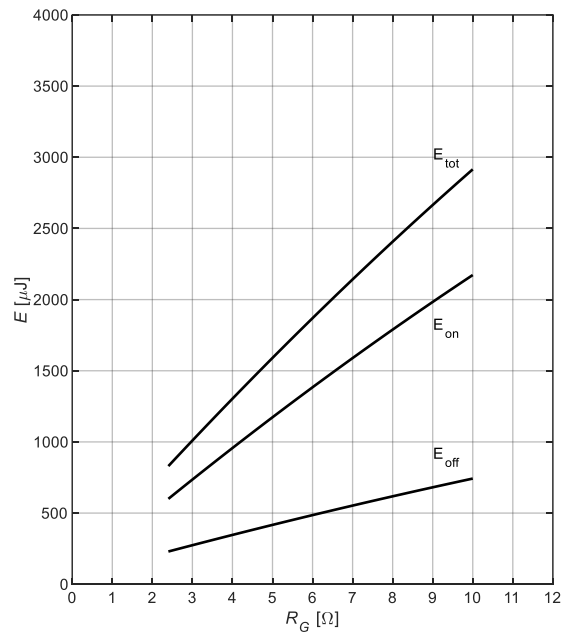
$E=f(V_{DD}); V_{GS}=-5/+18V; R_G=2.4\Omega; I_D=70A$

Figure 19: Typ. switching energy losses



$E=f(T_j); V_{DD}=800V; V_{GS}=-5/+18V; R_G=2.4\Omega; I_D=70A$

Figure 20: Typ. switching energy losses



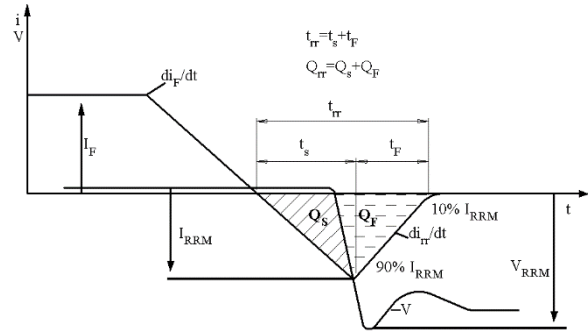
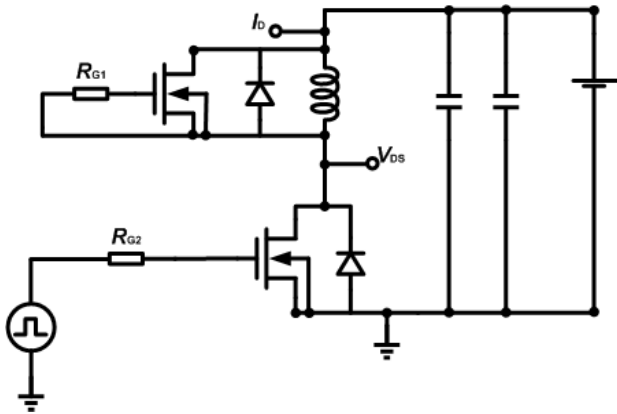
$E=f(R_G); V_{DD}=800V; V_{GS}=-5/+18V; I_D=70A$



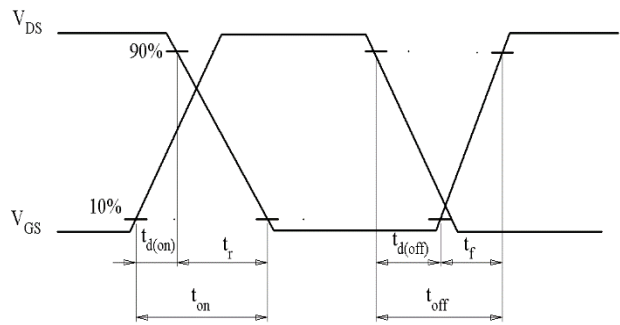
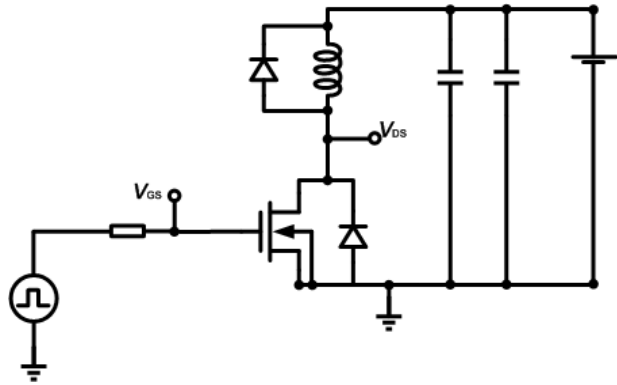


5. Test Circuits

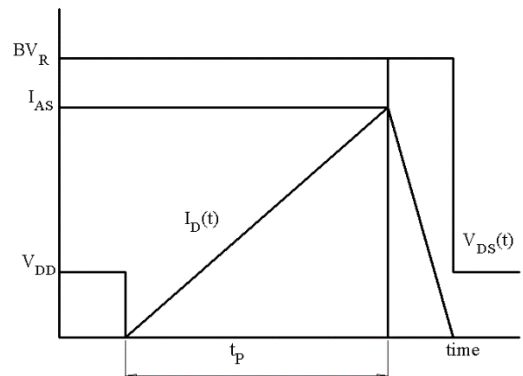
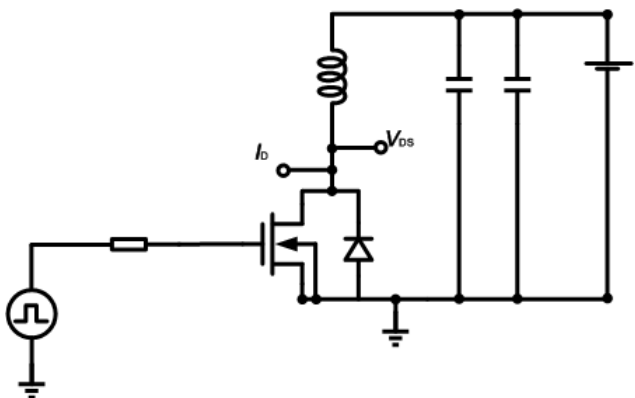
1) Test circuit and waveform for diode characteristics



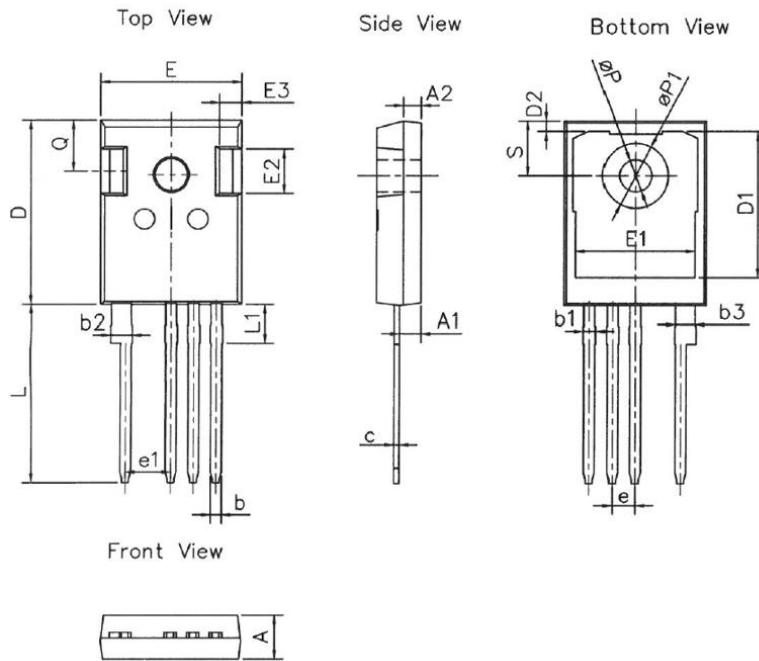
2) Switch time test circuit



3) Unclaimed inductive switching test circuit & waveforms



6.Package outline dimensions



Dimension unit: [mm]			
SYMBOL	MIN	NOM	MAX
A	4.80	5.00	5.20
A1	2.21	2.41	2.61
A2	1.85	2.00	2.15
b	1.11	1.21	1.36
b1	1.11	1.37	1.57
b2	2.24	2.40	2.60
b3	2.11	2.21	2.36
c	0.51	0.60	0.75
D	20.70	20.90	21.30
D1	15.92	16.22	16.52
D2	1.00	1.20	1.35
E	15.50	15.80	16.10
E1	13.00	13.30	13.60
E2	4.80	5.00	5.20
E3	2.30	2.50	2.70
e	2.54 BSC		
e1	5.08 BSC		
L	19.62	19.92	20.22
L1	-	-	4.30
øP	3.40	3.60	3.80
øP1	-	-	7.30
Q	5.40	5.80	6.20
S	6.20 BSC		



## 7.Revision History

Revision	Description	Date
1.0	Initial version	2023/12/15

## IMPORTANT NOTICE

LXP SEMI reserves the right to make changes without further notice to any products or specifications herein. You are solely responsible for your use of LXP SEMI's products and applications, and for the safety thereof. You shall comply with all laws, regulations and requirements related to LXP SEMI's products and applications, although information or support related to any application may still be provided by LXP SEMI.

The resources are intended only for skilled developers designing with LXP SEMI's products. LXP SEMI reserves the rights to make corrections, modifications, enhancements, improvements or other changes to the products and services provided. LXP SEMI authorizes you to use these resources exclusively for the development of relevant applications designed to integrate LXP SEMI's products. Using these resources for any other purpose, or any unauthorized reproduction or display of these resources is strictly prohibited. LXP SEMI shall not be liable for any claims, damages, costs, losses or liabilities arising out of the use of these resources.

For further information on applications, products and technologies, please contact LXP SEMI office.

---

Shanghai Lanxin Power Semiconductor Co., Ltd

Room 302, Building 1, No.515 HuanKe Road, Pudong New Area, Shanghai

Tel1: 13341860056

Tel2: 19921018496

