

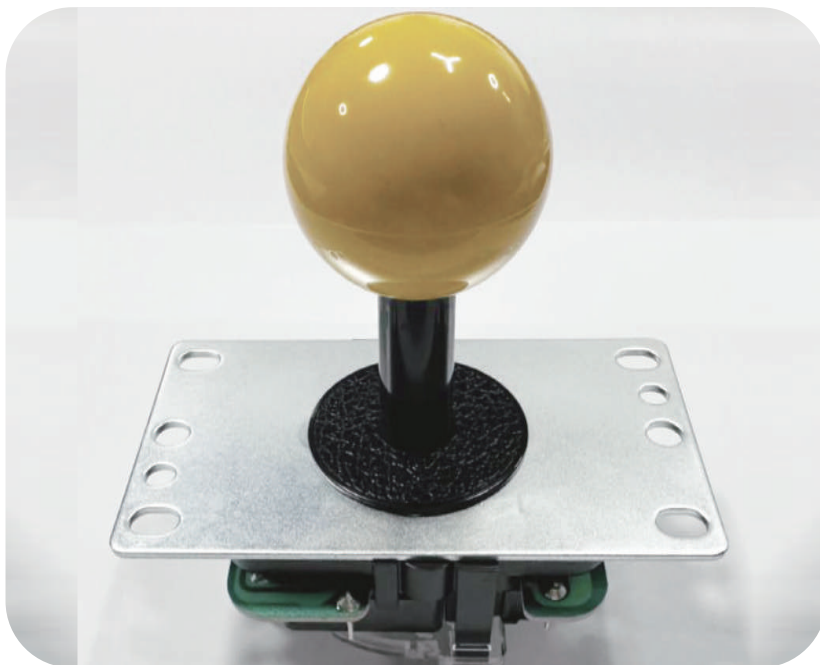


安装“三和摇杆模块”前的预处理步骤

步骤一：拆下球头

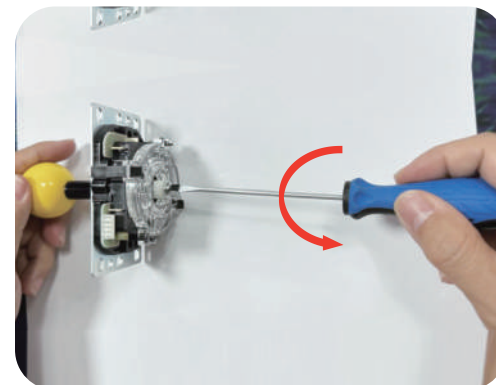
工具清单

1、一字螺丝刀×1直径3MM 2、卡簧钳×2 (拆卸各一把)

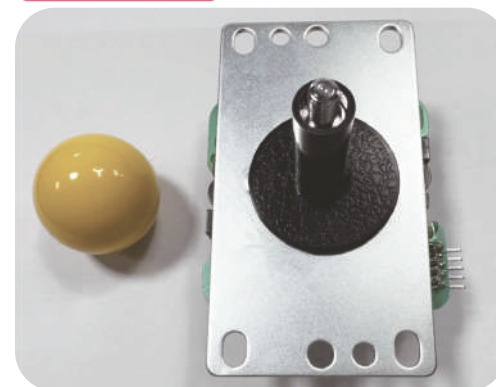


三和摇杆拆解前
使用工具：一字螺丝刀

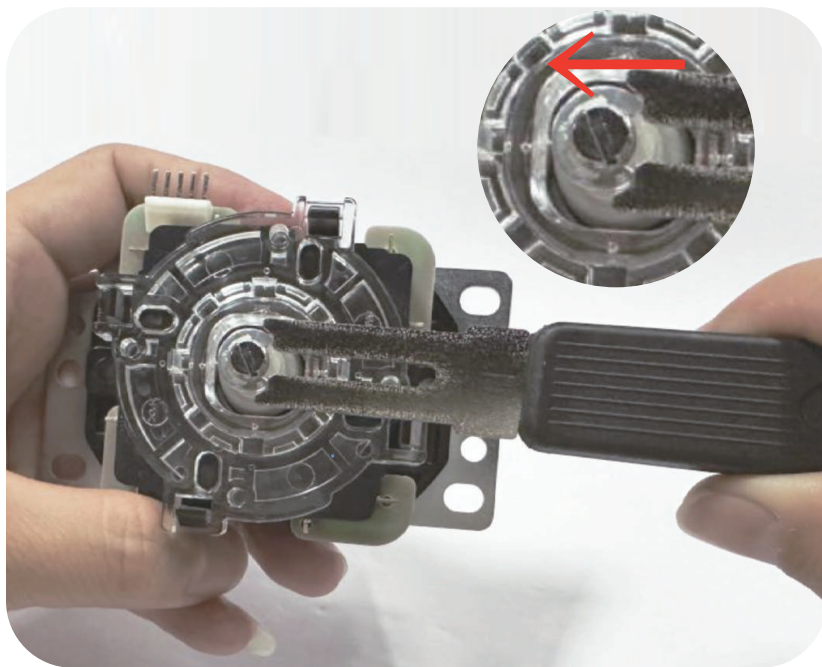
① 手握着球头不动，用一字螺丝刀对着底部一字往逆时针方向拧松螺丝即可拆下球头，请看下图



② 球头拆下示图



步骤二:拆下三和摇杆手柄



将卡簧钳对着卡簧用力往前推即可拆下卡簧分解配件
使用工具：卡簧钳



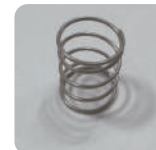
① 取下卡簧



② 取下白色胶套



③ 取下弹簧



④ 取下手柄杆



⑤ 取下黑色胶套



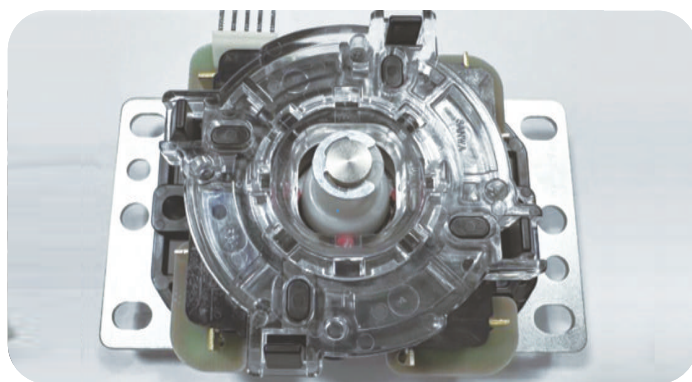
⑥ 取下锥形胶套



步骤三:组装拆卸手柄



正面



背面

拆卸手柄组装完成后示意图

① 将圆形胶套
装入



② 将锥形胶套
装入



③ 将手柄公杆
装入



④ 将弹簧套
入公杆上

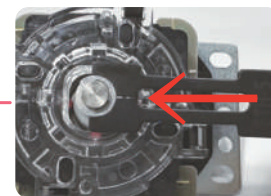
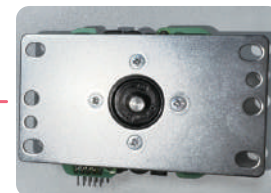
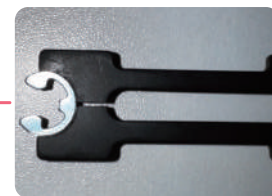
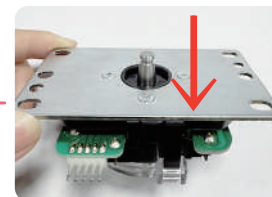


⑤ 将白色胶套
装上



⑥ 用手将白色胶套往下
按压至漏出卡簧槽

⑦ 把卡簧装到卡簧钳上
然后对准卡簧槽往前
推进直至完全卡入即
安装完毕



步骤四:拆卸手柄装上球头后至装机使用

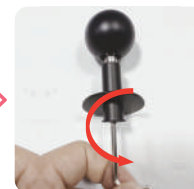


拆卸手柄装上
球头示意图

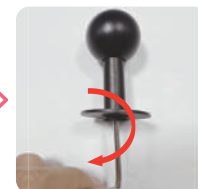
先将内六角扳手插入手柄内部
固定，然后将球头拧进杆上，
然后按顺时针转动扳手直至拧
紧，完成安装



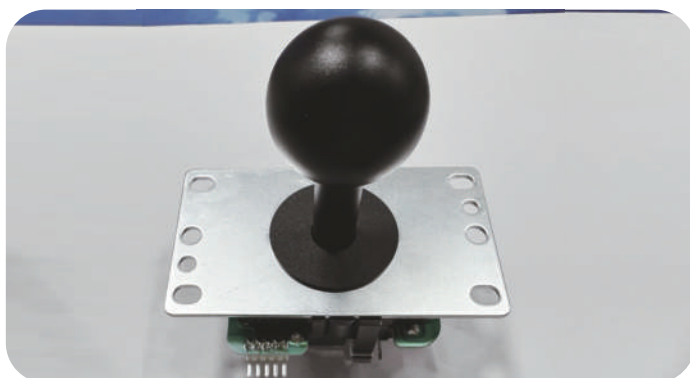
①



②



③

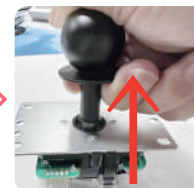


装入拆卸手柄
与球头示意图

将组装好球头的手柄用手用力将
套桶往上拉到底不松手，然后套
入公杆上至完全套入方可松手，
即完成全部装配可使用



①



②



③

拆卸手柄组装完成后示意图
使用工具：六角扳手

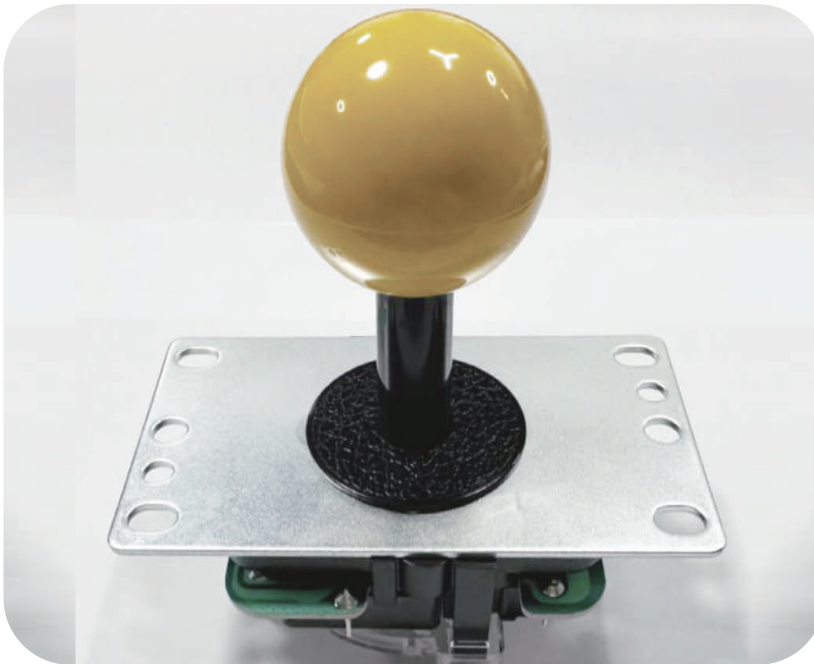


Preprocessing Steps Before Installing The Sanwa Joystick

Step 1: Remove the balltop

Tool List

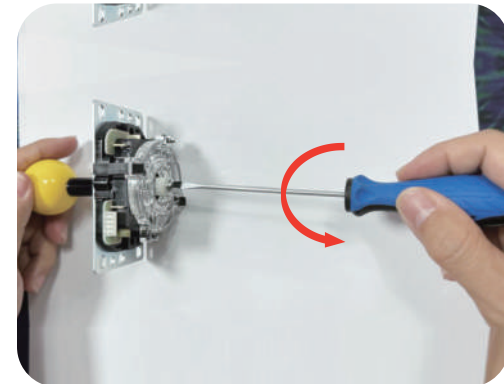
- 1、Flathead screwdriver ×1 (3mm diameter)
- 2、Circlip pliers ×2 (one for installation, one for removal)



Before disassembling the Sanwa joystick
Tool Used: Flathead Screwdriver

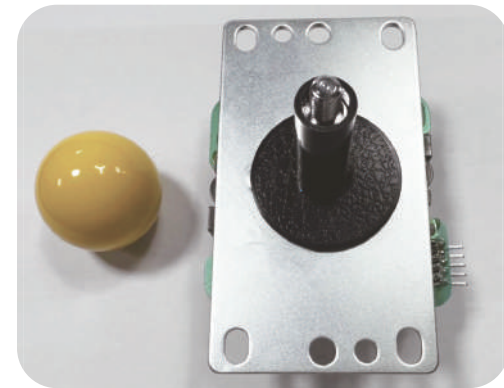
①

Hold the balltop firmly. Insert the flathead screwdriver into the slot at the base of the shaft and turn it counterclockwise to loosen and remove the balltop. Please refer to the diagram below

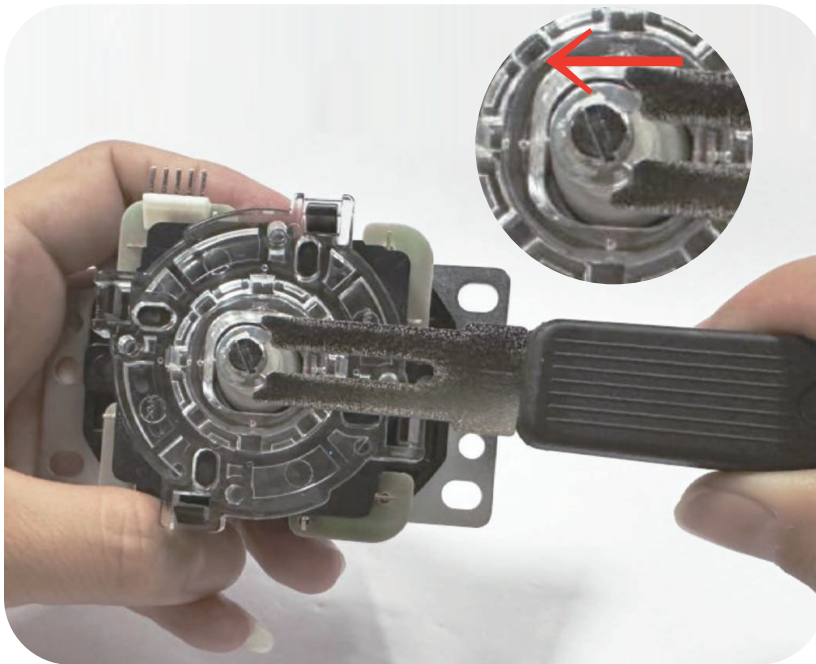


②

Balltop Removed - Diagram



Step 2: Remove the Sanwa joystick shaft connector



Use the circlip pliers to push the circlip forward and remove it to disassemble the components
Tool Used: Circlip Pliers



①

Remove the circlip



②

Remove the
white plastic sleeve



③

Remove the spring



④

Remove the joystick shaft



⑤

Remove the round
plastic sleeve



⑥

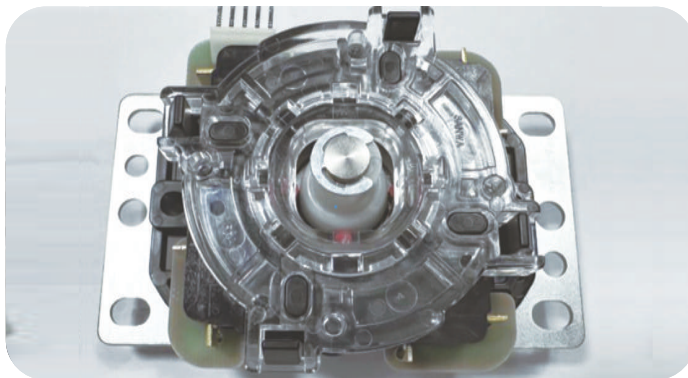
Remove the conical
plastic sleeve



Step 3: Assemble the Sanwa joystick shaft connector



Front View



Rear View

Diagram after shaft connector assembly is complete

① Insert the round plastic sleeve



② Insert the conical plastic sleeve



③ Insert the base shaft of the handle



④ Slide the spring onto the shaft

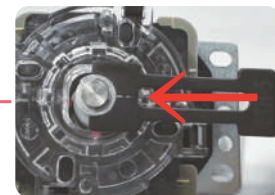
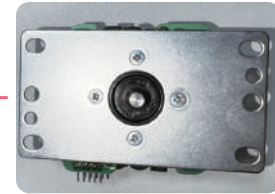
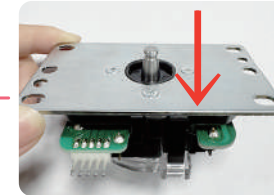


⑤ Attach the white plastic sleeve



⑥ Press the white plastic sleeve downward by hand until the circlip groove is visible

⑦ Place the circlip onto the pliers, align it with the groove, and push it forward until it snaps into place — installation complete



Step 4: Attach the balltop to the shaft and install it onto the controller



Diagram of
ballot attached
to the shaft

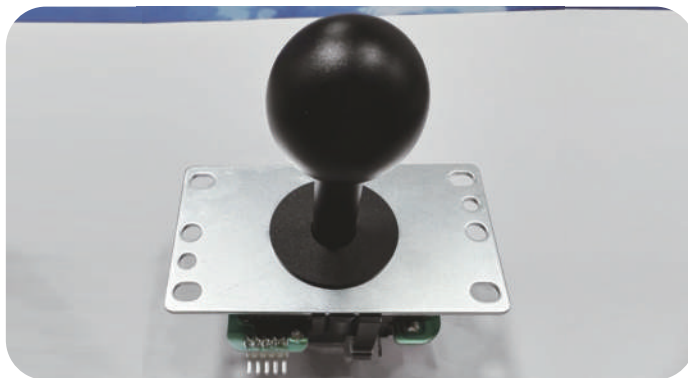
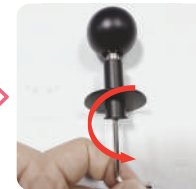


Diagram of
the shaft
inserted with
the balltop

Insert the hex wrench into the inner shaft to hold it in place, then screw the balltop onto the shaft by turning it clockwise until tightened — installation complete



①



②

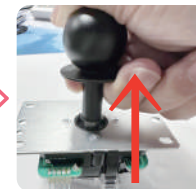


③

Firmly pull the collar of the assembled balltop shaft upward and hold it. Insert the shaft into the socket completely, then release — assembly is complete and ready for use



①



②



③

Completed joystick assembly diagram
Tool Used: Hex Wrench